

LOC I-BPT <b>110.15</b> Chan <b>38(Y)</b>	APP CRS <b>296°</b>	Rwy Idg <b>6750</b> TDZE <b>12</b> Apt Elev <b>15</b>
---	------------------------	---

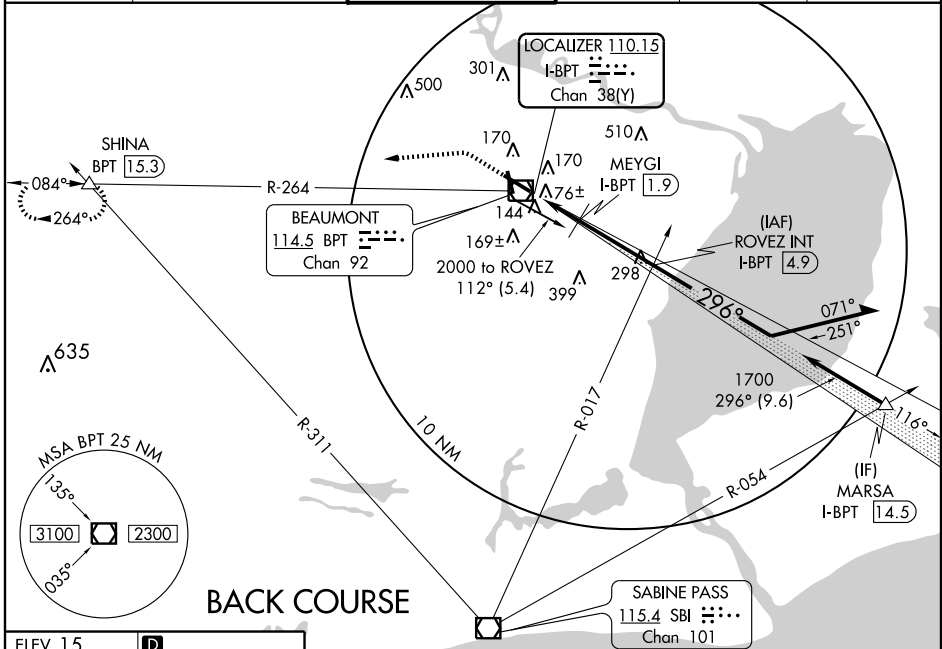
# LOC BC RWY 30

BEAUMONT-PORT ARTHUR/SOUTHEAST TEXAS RGNL (BPT)

**▼** Visibility reduction by helicopters NA. When local altimeter setting not received, use Orange County altimeter setting and increase all MDA 40 feet, increase Circling Cat E visibility ¼ mile, MEYGI fix minimums: increase S-30 Cat C/D/E visibility ¼ mile and Circling Cat E ¼ mile.

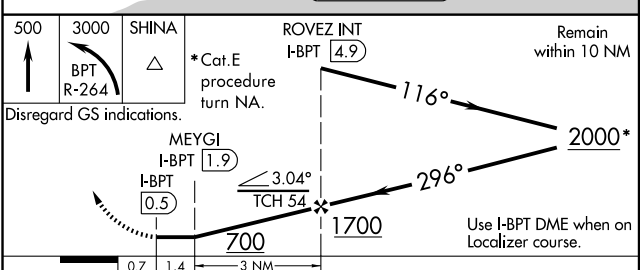
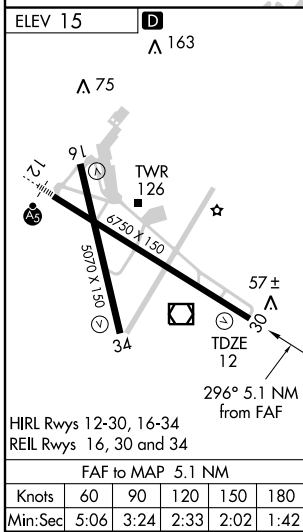
**▲** MISSED APPROACH: Climb to 500 then climbing left turn to 3000 via BPT VOR/DME R-264 to SHINA Int/BPT 15.3 DME and hold.

ATIS <b>126.3</b>	HOUSTON APP CON <b>121.3 377.1</b>	BEAUMONT TOWER * <b>119.5 (CTAF) 0</b>	GND CON <b>121.9</b>	CLNC DEL <b>118.3</b>	UNICOM <b>122.95</b>
----------------------	---------------------------------------	---	-------------------------	--------------------------	-------------------------



SC-5, 11 MAR 2010 to 08 APR 2010

SC-5, 11 MAR 2010 to 08 APR 2010



CATEGORY	A	B	C	D	E
S-30	700-1	688 (700-1)	700-2 688 (700-2)	700-2¼ 688 (700-2¼)	700-2½ 688 (700-2½)
CIRCLING	700-1	685 (700-1)	700-2 685 (700-2)	700-2¼ 685 (700-2¼)	820-2¾ 805 (900-2¾)
MEYGI FIX MINIMUMS					
S-30	400-1 388 (400-1)			400-1¼ 388 (400-1¼)	
CIRCLING	480-1	465 (500-1)	480-1½ 465 (500-1½)	580-2 565 (600-2)	820-2¾ 805 (900-2¾)

# LOC BC RWY 30