

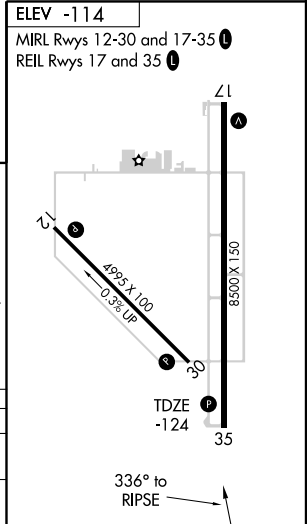
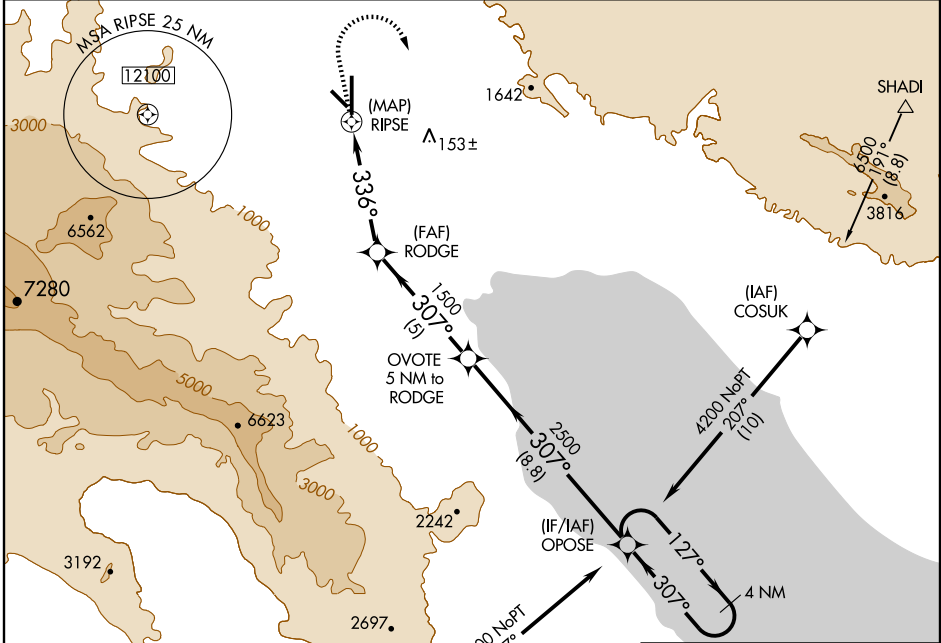
RNAV (GPS) RWY 35

PALM SPRINGS/JACQUELINE COCHRAN RGNL (TRM)

APP CRS 336°	Rwy Idg 8500 TDZE -124 Apt Elev -114
------------------------	---

NA GPS or RNP-0.3 required. DME/DME RNP-0.3 NA. MISSED APPROACH: Climb to 1350 then climbing right turn to 4200 direct OPOSE WP and hold.

ASOS 118.325	SOCAL APP CON * 135.275 251.1	UNICOM 123.0 (CTAF)
------------------------	---	-------------------------------



1350	4200	OPOSE	RODGE	OPOSE	4 NM Holding Pattern
↑	↘	✦	✦	✦	✦
0.2	2.2	2.6	5	8.8	
	2.2 NM to RIPSE	≤ 2.99° TCH 50	307°	127°	4200
			307°	307°	

CATEGORY	A	B	C	D
LNVA MDA	700-1 824 (900-1)	700-1¼ 824 (900-1¼)	700-2½ 824 (900-2½)	700-2¾ 824 (900-2¾)
CIRCLING	700-1 814 (900-1)	700-1¼ 814 (900-1¼)	700-2½ 814 (900-2½)	700-2¾ 814 (900-2¾)

RNAV (GPS) RWY 35

SW-3, 11 MAR 2010 to 08 APR 2010

SW-3, 11 MAR 2010 to 08 APR 2010