

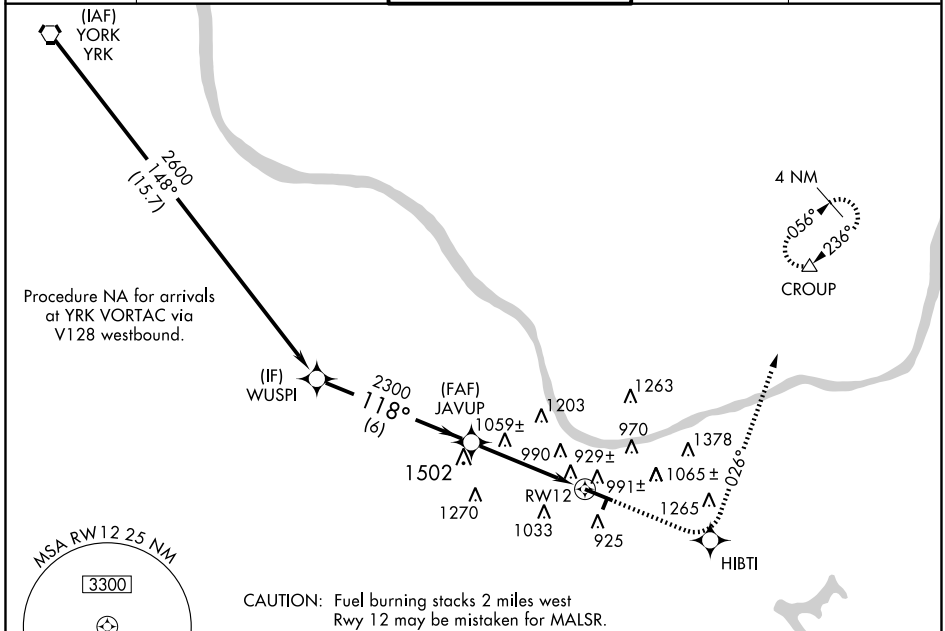
RNAV (GPS) RWY 12

HUNTINGTON / TRI-STATE/MILTON J. FERGUSON FIELD (HTS)

WAAS CH 45699 W12A	APP CRS 118°	Rwy Idg TDZE 828 Apt Elev 828	6517
--	------------------------	---	-------------

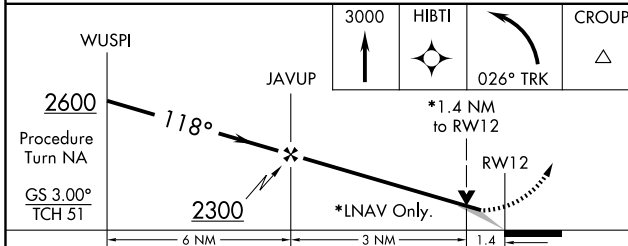
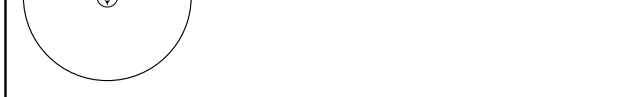
ASR	DME/DME RNP-0.3 NA. When VGSI inop, Circling Rwy 3 NA at night. For inoperative MALSR, increase LPV all Cats visibility to RVR 6000. For uncompensated Baro-VNAV systems, LNAV/VNAV NA below -16°C (4°F) or above 47°C (116°F)	MALSR	MISSED APPROACH: Climb to 3000 direct HIBTI and left turn via 026° track to CROUP and hold.

ATIS 125.2	HUNTINGTON APP CON 119.75 270.1	HUNTINGTON TOWER 118.5 270.1	GND CON 121.9	CLNC DEL 118.05
----------------------	---	--	-------------------------	---------------------------

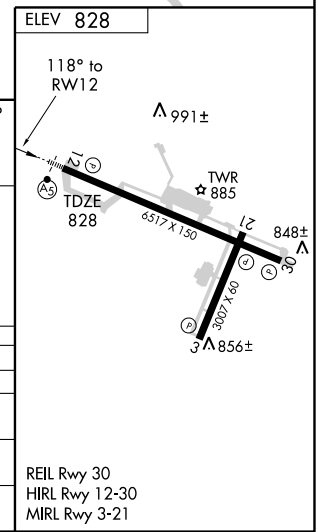


NE-4, 11 MAR 2010 to 08 APR 2010

NE-4, 11 MAR 2010 to 08 APR 2010



CATEGORY	A	B	C	D
LPV DA	1157/40		329 (400-¾)	
LNAV/VNAV DA	1329/60		501 (600-1¼)	
LNAV MDA	1320/24	492 (500-½)	1320/40 492 (500-¾)	1320/50 492 (500-1)
CIRCLING	1340-1	512 (600-1)	1340-1½ 512 (600-1½)	1420-2 592 (600-2)



RNAV (GPS) RWY 12