

# RNAV (GPS) RWY 13

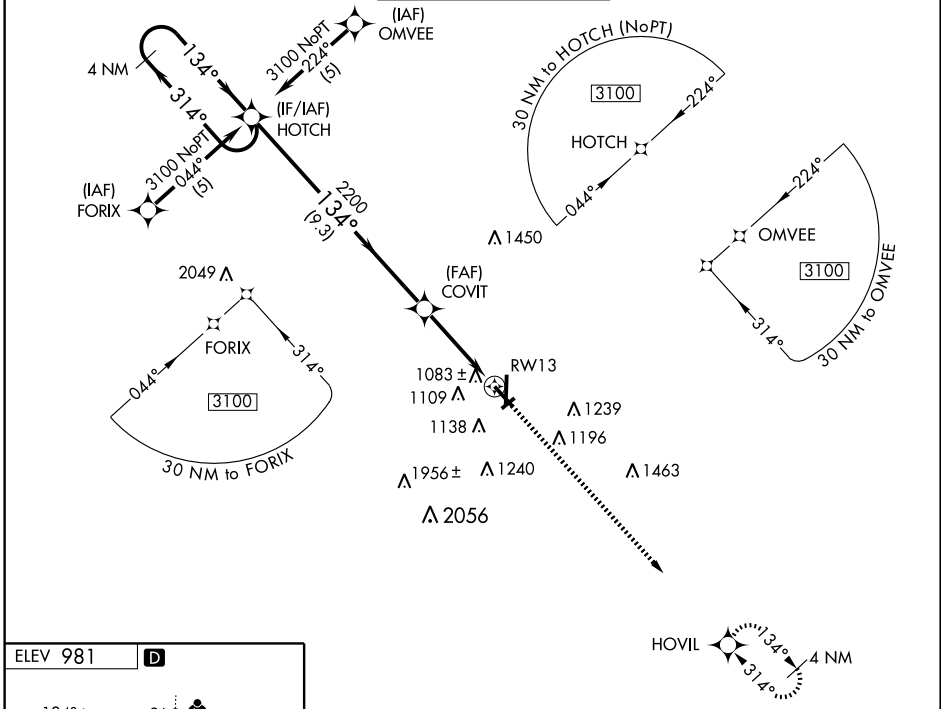
JOPLIN RGNL (JLN)

WAAS CH <b>90109</b> <b>W13A</b>	APP CRS <b>134°</b>	Rwy Idg <b>5802</b> TDZE <b>968</b> Apt Elev <b>981</b>
--	------------------------	---

**▽** MALSF (NSTD) 1368'.  
DME/DME RNP-0.3 not authorized.  
Baro-VNAV not authorized below -1.6°C (4°F)  
For inoperative MALSF, increase LPV CATS A/B/C visibility to 1.

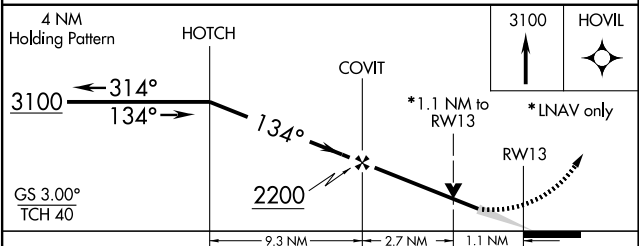
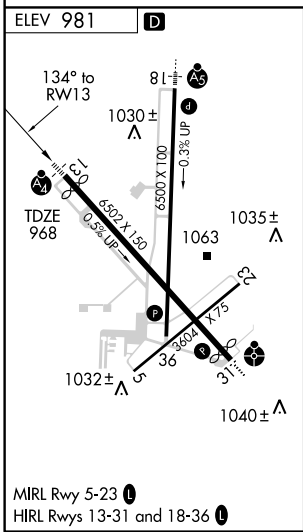
MALSF  MISSED APPROACH: Climb to 3100 direct HOVIL and hold.

ATIS <b>120.85</b>	KANSAS CITY CENTER <b>128.6 282.325</b>	JOPLIN TOWER* <b>119.8 (CTAF) 0 282.2</b>	GND CON <b>121.6</b>	UNICOM <b>122.95</b>
-----------------------	--	--	-------------------------	-------------------------



NC-3, 11 MAR 2010 to 08 APR 2010

NC-3, 11 MAR 2010 to 08 APR 2010



CATEGORY	A	B	C	D
LPV DA	1220-¾	252 (300-¾)		1220-1 252 (300-1)
LNAV/VNAV DA	1380-1¼	412 (400-1¼)		1380-1½ 412 (400-1½)
LNAV MDA	1340-¾	372 (400-¾)		1340-1 372 (400-1)
CIRCLING	1460-1½ 479 (500-1½)	1500-1½	519 (600-1½)	1540-2 559 (600-2)