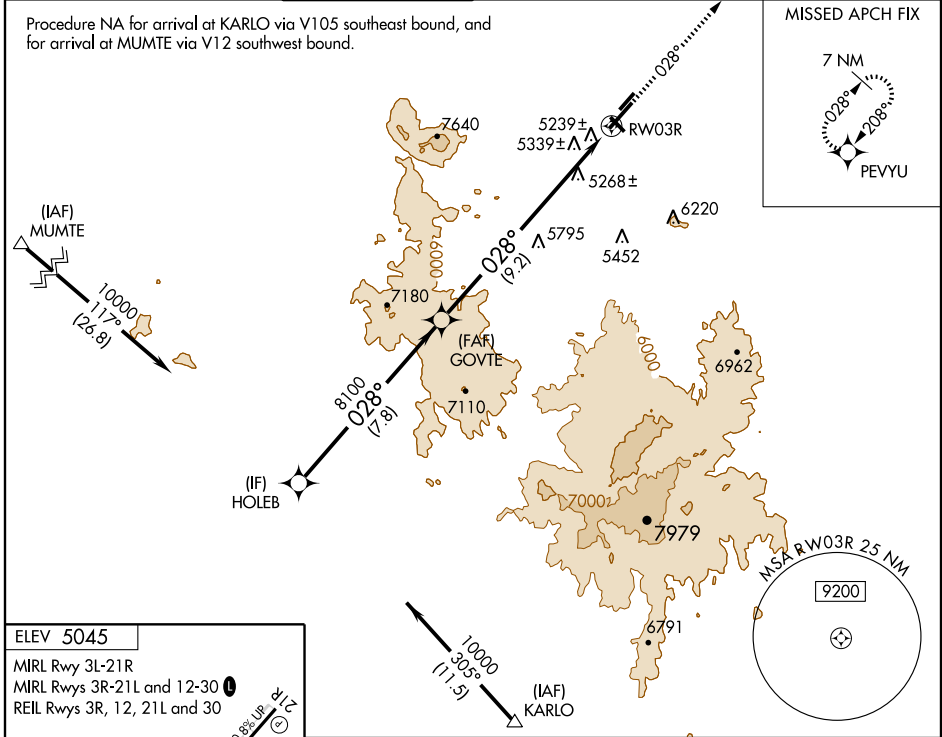


APP CRS	Rwy Idg	<b>6828</b>
<b>028°</b>	TDZE	<b>5022</b>
	Apt Elev	<b>5045</b>

# RNAV (RNP) RWY 3R

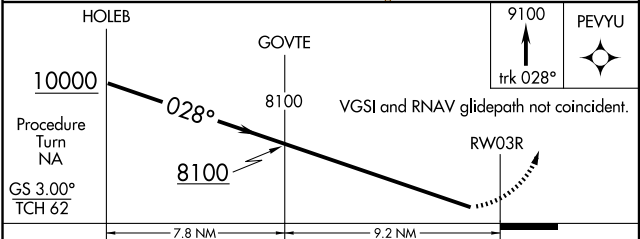
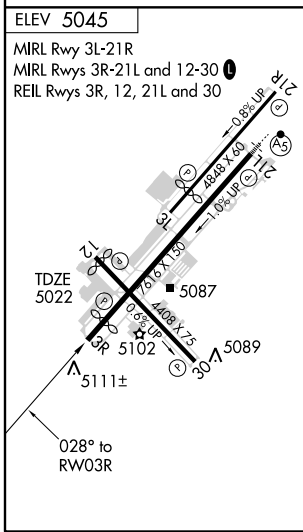
PRESCOTT / ERNEST A. LOVE FIELD (PRC)

GPS required. For uncompensated Baro-VNAV systems, procedure NA below -11°C (12°F) or above 54°C (130°F). NA Visibility reduction by helicopters NA. Procedure NA at night.	MISSED APPROACH: Climb to 9100 via track 028° to PEVYU and hold.		
	ATIS <b>127.2</b> ALBUQUERQUE CENTER <b>128.45 298.9</b> PRESCOTT TOWER ★ <b>125.3 (CTAF) 257.9</b> GND CON <b>121.7</b> PRESCOTT RADIO <b>122.4 255.4</b> <b>128.75</b> (12-30) <b>125.3 (CTAF)</b> (3R-21L)		



SW-4, 11 MAR 2010 to 08 APR 2010

SW-4, 11 MAR 2010 to 08 APR 2010



CATEGORY	A	B	C	D
RNP 0.15 DA	5492-1½	470 (500-1½)		NA
RNP 0.30 DA	5667-2¼	645 (700-2¼)		NA

## SPECIAL AIRCRAFT AND AIRCREW AUTHORIZATION REQUIRED