

RNAV (GPS) Y RWY 6

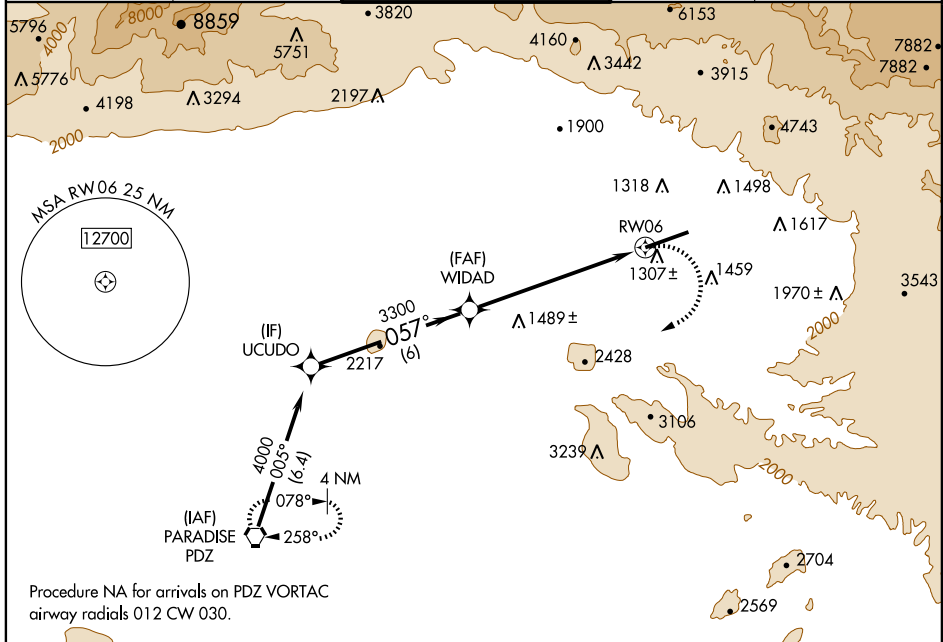
SAN BERNARDINO INTL (SBD)

APP CRS	Rwy Idg	10001
057°	TDZE	1091
	Apt Elev	1159

NA Circling NA north of Rws 6 and 24. DME/DME RNP -0.3 NA. Visibility reduction by helicopters NA. When local altimeter setting not received, procedure NA.

MISSED APPROACH: Climbing right turn to 5000 direct PDZ VORTAC and hold.

ATIS 124.175	SOCAL APP CON 127.25 318.2	SAN BERNARDINO TOWER* 119.45 (CTAF) 0	GND CON 121.8	UNICOM 122.975
------------------------	--------------------------------------	--	-------------------------	--------------------------



SW-3, 11 MAR 2010 to 08 APR 2010

SW-3, 11 MAR 2010 to 08 APR 2010

Procedure NA for arrivals on PDZ VORTAC
airway radials 012 CW 030.



ELEV 1159

TDZE 1091

0.7% UP

0.8% DOWN

10001 X 180

057° to RW06

CATEGORY	A	B	C	D
LNVA MDA	2480-1½ 1389 (1400-1¼)	2480-1½ 1389 (1400-1½)	2480-3	1389 (1400-3)
CIRCLING	2480-1½ 1321 (1400-1¼)	2480-1½ 1321 (1400-1½)	2480-3	1321 (1400-3)

HIRL Rwy 6-24 **0**