

# LOC Y RWY 6

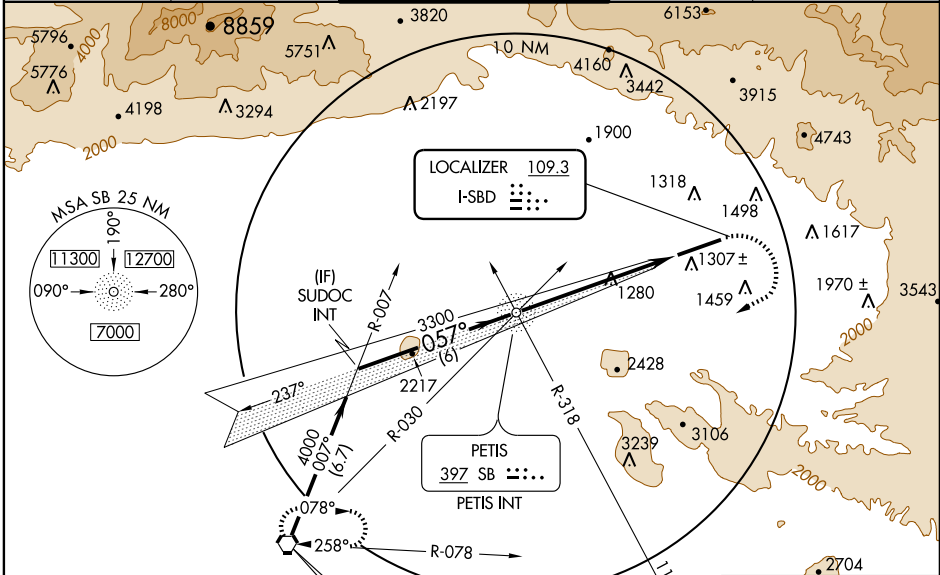
SAN BERNARDINO INTL (SBD)

LOC I-SBD	APP CRS	Rwy ldg	10001
<b>109.3</b>	<b>057°</b>	TDZE	1091
		Apt Elev	1159

**NA** If local altimeter setting not received, use Ontario Intl altimeter setting and increase all MDAs 80 feet. Circling NA north of Rwy 6-24. Visibility reduction by helicopters NA.

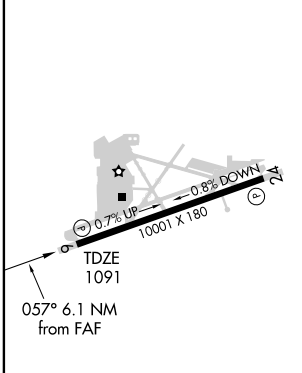
**MISSED APPROACH:** Climb to 3100, then climbing right turn to 6000 direct PDZ VORTAC and hold, continue climb-in-hold to 6000.

ATIS <b>124.175</b>	SOCAL APP CON <b>127.25 318.2</b>	SAN BERNARDINO TOWER* <b>119.45</b> (CTAF) <b>0</b>	GND CON <b>121.8</b>	UNICOM <b>122.975</b>
------------------------	--------------------------------------	--	-------------------------	--------------------------



Procedure NA for arrivals on PDZ VORTAC via airway radials 012 CW 030.

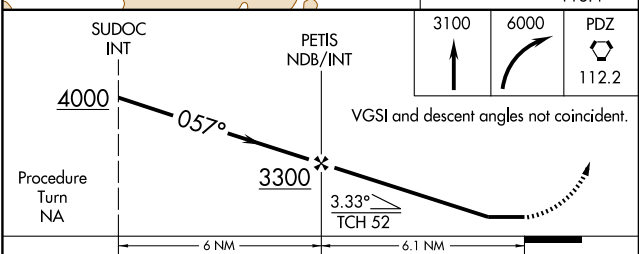
ELEV 1159
-----------



HIRL Rwy 6-24 **0**

FAF to MAP 6.1 NM

Knots	60	90	120	150	180
Min:Sec	6:06	4:04	3:03	2:26	2:02



CATEGORY	A	B	C	D
S-6	2480-1¼ 1389 (1400-1¼)	2480-1½ 1389 (1400-1½)	2480-3	1389 (1400-3)
CIRCLING	2480-1¼ 1321 (1400-1¼)	2480-1½ 1321 (1400-1½)	2480-3	1321 (1400-3)

SW-3, 11 MAR 2010 to 08 APR 2010

SW-3, 11 MAR 2010 to 08 APR 2010