

RNAV (GPS) RWY 28

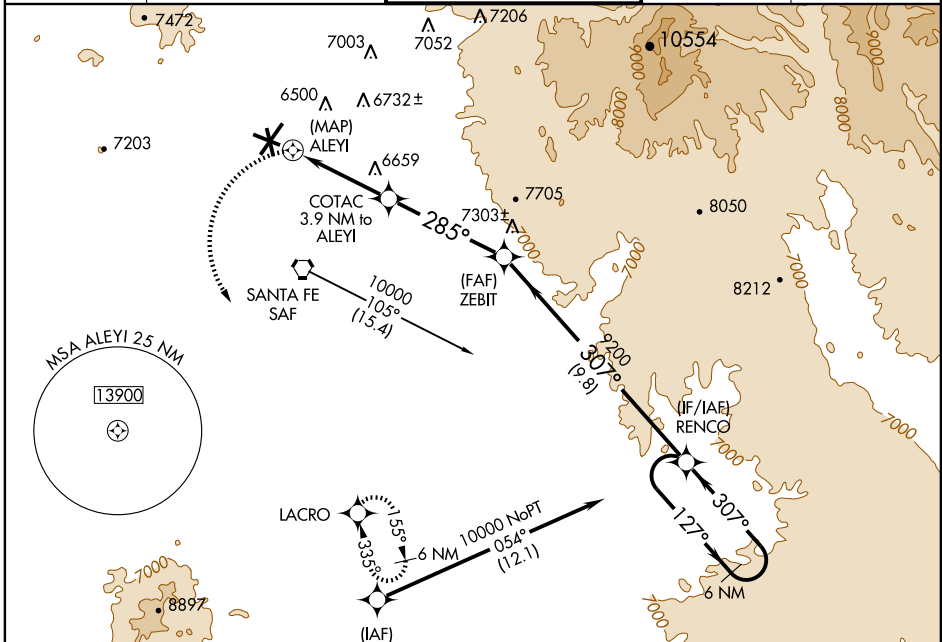
SANTA FE MUNI (SAF)

APP CRS	Rwy Idg	6300
285°	TDZE	6307
	Apt Elev	6348

NA GPS or RNP-0.3 required. DME/DME RNP-0.3 NA.
 Procedure NA at night.

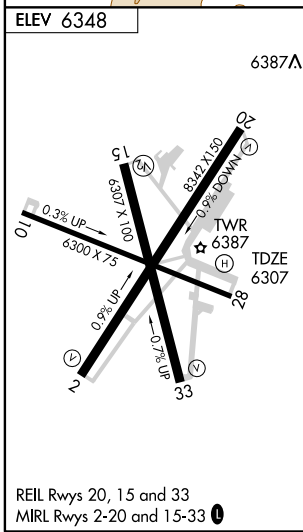
MISSED APPROACH: Climbing left turn to 9000 direct LACRO WP and hold.

ATIS 128.55	ALBUQUERQUE CENTER 132.8 346.35	SANTA FE TOWER ★ 119.5 (CTAF) 239.3	GND CON 121.7	UNICOM 122.95
-----------------------	---	---	-------------------------	-------------------------

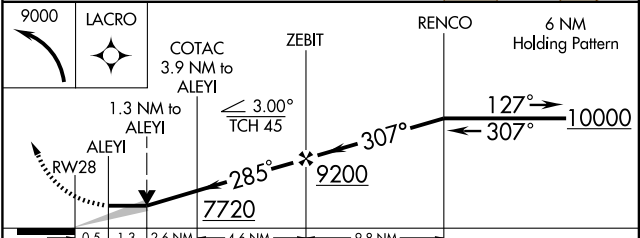


SW-1, 11 MAR 2010 to 08 APR 2010

SW-1, 11 MAR 2010 to 08 APR 2010



Procedure NA for arrival at SAF VORTAC via V263-611 westbound.



CATEGORY	A	B	C	D
LNAV MDA	6920-1	613 (600-1)	6920-1 $\frac{3}{4}$ 613 (600-1 $\frac{3}{4}$)	6920-2 613 (600-2)
CIRCLING	6920-1	572 (600-1)	6920-1 $\frac{3}{4}$ 572 (600-1 $\frac{3}{4}$)	7040-2 $\frac{1}{2}$ 692 (700-2 $\frac{1}{2}$)