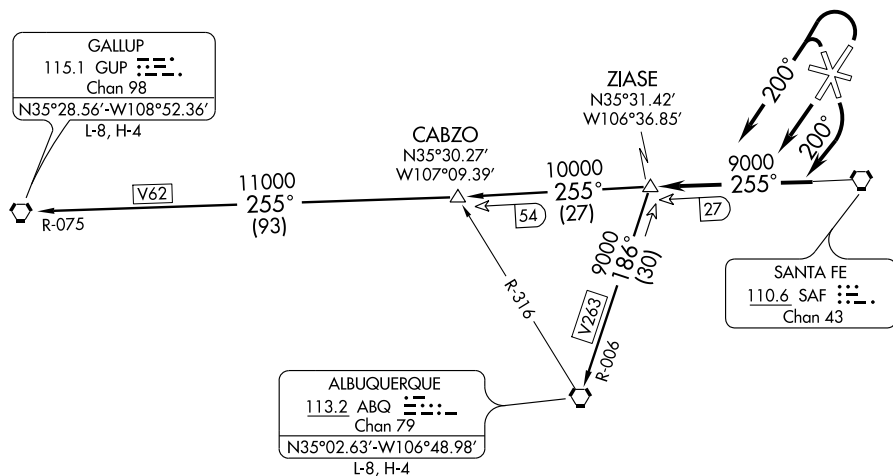


# ZIAS TWO DEPARTURE

SL-548 (FAA)

SANTA FE MUNI (SAF)  
SANTA FE, NEW MEXICO

ATIS 128.55  
GND CON  
121.7  
SANTA FE TOWER\*  
119.5 (CTAF) 239.3  
ALBUQUERQUE CENTER  
132.8 346.35



SW-1, 11 MAR 2010 to 08 APR 2010

SW-1, 11 MAR 2010 to 08 APR 2010

CAUTION: Mountainous terrain all quadrants.

NOTE: Takeoff runways 2 and 33 requires a minimum climb of 280' per NM until passing 7900, or 1300' ceiling and 3 miles visibility.

NOTE: Chart not to scale.

## DEPARTURE ROUTE DESCRIPTION

TAKE-OFF RUNWAYS 2 & 33: Climbing left turn to heading 200° to....

TAKE-OFF RUNWAY 15: Climbing right turn to heading 200° to....

TAKE-OFF RUNWAY 20: Climb on runway heading to....

....intercept and proceed via SAF R-255 to ZIAS INT. Climb and maintain 9000' MSL. Thence via assigned (transition) or (route).

ALBUQUERQUE TRANSITION (ZIAS2.ABQ): From over ZIAS INT via V263/ABQ R-006 to ABQ VORTAC. Thence via (assigned route).

GALLUP TRANSITION (ZIAS2.GUP): From over ZIAS INT via V62/SAF R-255 and GUP R-075 to GUP VORTAC. Thence via (assigned route).

# ZIAS TWO DEPARTURE