

RNAV (GPS) Z RWY 33

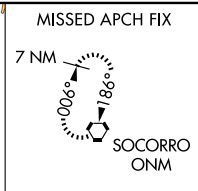
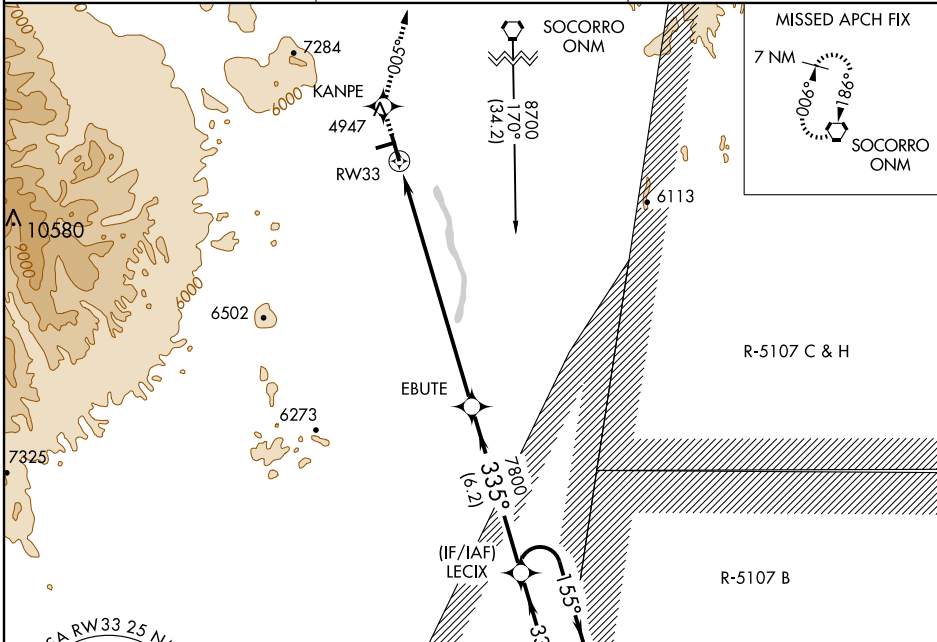
SOCORRO MUNI (ONM)

WAAS CH 49114 W33A	APP CRS 335°	Rwy Idg TDZE 4782 Apt Elev 4875
--	------------------------	---

NA Circling NA west of Rwy 15-33. DME/DME RNP-0.3 NA. Visibility reduction by helicopters NA. Circling requires descent on GS to CMDA. Procedure NA when R-5107E active. Obtain local altimeter setting on CTAF; when not received, procedure NA.

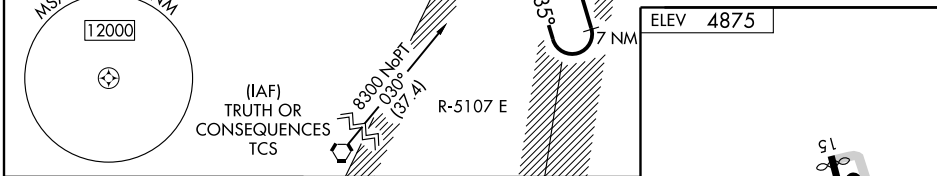
MISSED APPROACH: Climb to 8000 direct KANPE and via track 005° to ONM VORTAC and hold.

AWOS-3 118.325	ALBUQUERQUE CENTER 124.325 288.25	UNICOM 122.8 (CTAF)
--------------------------	---	-------------------------------

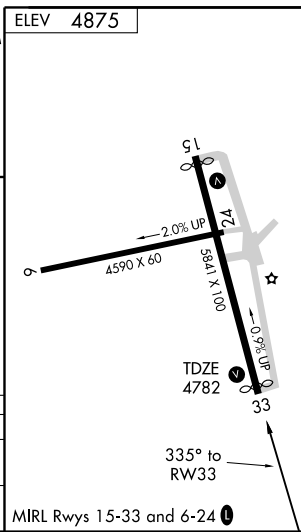


SW-1, 19 NOV 2009 to 17 DEC 2009

SW-1, 19 NOV 2009 to 17 DEC 2009



8000	KANPE	trk 005°	ONM	EBUTE	LECIX	7 NM Holding Pattern
VGSI and RNAV glidepath not coincident.						
RW33				335°	155°	8300
				7800		GS 3.00° TCH 50
				9.2 NM	6.2 NM	



CATEGORY	A	B	C	D
LPV DA	5032-1 250 (300-1)			NA
CIRCLING	5260-1 385 (400-1)	5340-1 465 (500-1)	5340-1½ 465 (500-1½)	NA