

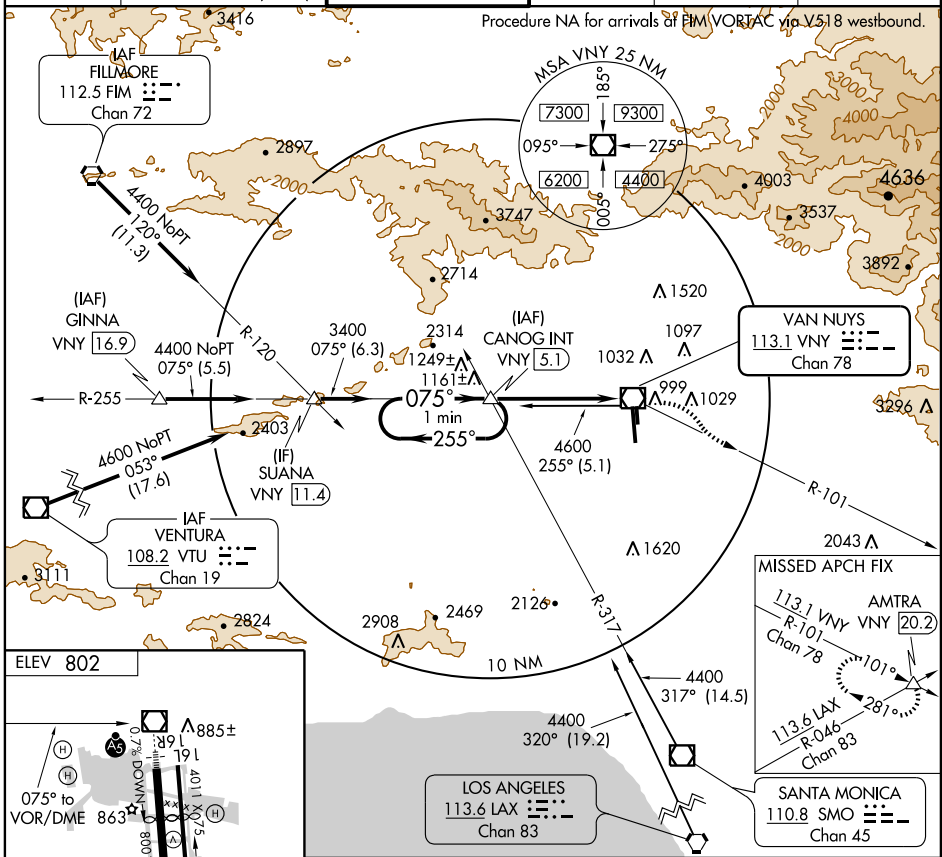
VOR-A
VAN NUYS (VNY)

VOR/DME VNY 113.1 Chan 78	APP CRS 075°	Rwy Idg TDZE Apt Elev	N/A N/A 802
---	------------------------	-----------------------------	--

▽ When local altimeter setting not received, use Burbank altimeter setting and increase all MDAs 20 feet.

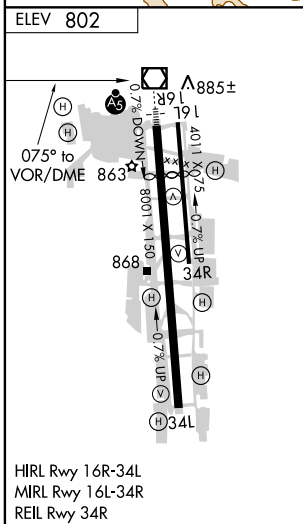
▲ MISSED APPROACH: Climbing right turn 4000 via VNY R-101 to AMTRA INT/ 20.2 DME and hold.

ATIS 118.45	SOCAL APP CON 120.4 360.6 (NORTH) 134.2 338.2 (WEST)	VAN NUYS TOWER* 119.3 (CTAF) 0 239.0	GND CON 121.7	CLNC DEL 126.6 239.0	UNICOM 122.95
-----------------------	--	--	-------------------------	--------------------------------	-------------------------



SW-3, 11 MAR 2010 to 08 APR 2010

SW-3, 11 MAR 2010 to 08 APR 2010



One Minute Holding Pattern

CANOG INT VNY [5.1]

4000 AMTRA VNY R-101 Δ

3700 ← 255° / 075° → 3400

VOR/DME

← 5.1 NM

CATEGORY	A	B	C	D
CIRCLING	1500-1	698 (700-1)	1500-2 698 (700-2)	1500-2½ 698 (700-2½)