

# CANOGA NINE DEPARTURE

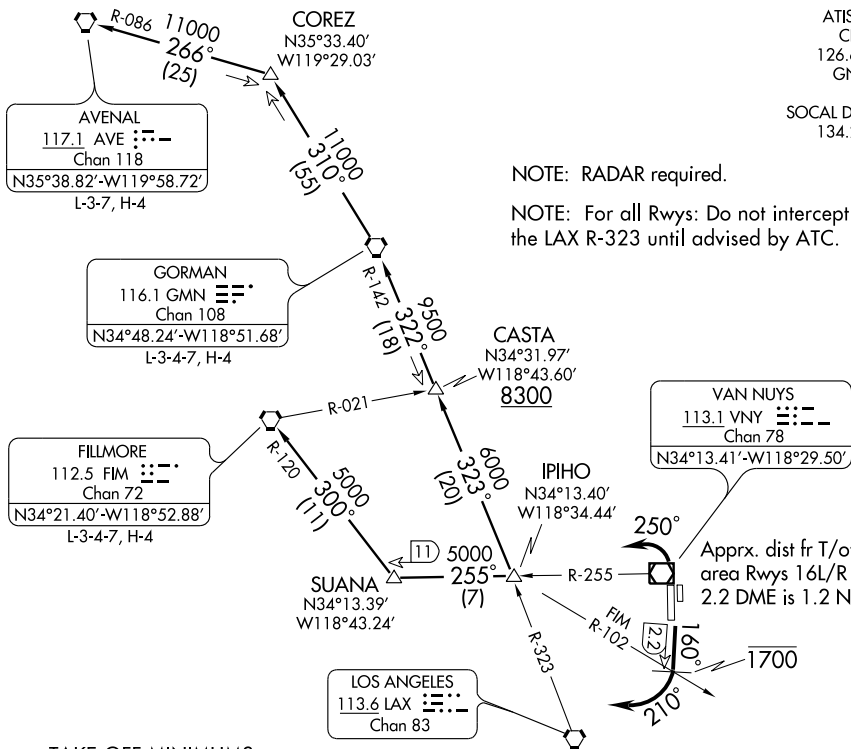
SL-552 (FAA)

VAN NUYS (VNY)  
VAN NUYS, CALIFORNIA

ATIS 118.45  
CLNC DEL  
126.6 239.0  
GND CON  
121.7  
SOCAL DEP CON  
134.2 338.2

NOTE: RADAR required.

NOTE: For all Rwy: Do not intercept  
the LAX R-323 until advised by ATC.



### TAKE-OFF MINIMUMS

- Rwy 16L/R: Standard with a minimum climb of 310' per NM to 8300.
- Fillmore Transition standard with a minimum climb of 310' per NM to 5000.
- Rwy 34L/R: Standard with a minimum climb of 370' per NM to 8300.
- Fillmore Transition standard with a minimum climb of 370' per NM to 5000.

### TAKE-OFF OBSTACLES

- RWY 16L: Light on hangar 713' from DER, 361' left of centerline, 27' AGL/798' MSL.
- RWY 16R: Hangar 209' from DER, 516' right of centerline, 9' AGL/755' MSL.  
 Flaggpole 570' from DER, 549' right of centerline, 15' AGL/761' MSL.  
 Building 941' from DER, 599' left of centerline, 28' AGL/774' MSL.  
 Multiple trees beginning 1129' from DER, left and right of centerline, up to 72' AGL/818' MSL.
- RWY 34L: Blast fence 169' from DER, 405' left of centerline, 10' AGL/812' MSL.  
 Obstruction light on blast fence, 241' from DER, 195' left of centerline, 17' AGL/819' MSL.  
 Multiple trees beginning 325' from DER, 549' right of centerline, up to 119' AGL/921' MSL.  
 Railroad 305' from DER, 369' right of centerline, 30' AGL/832' MSL.  
 Building 424' from DER, 589' right of centerline, 29' AGL/831' MSL.  
 Antenna on building 450' from DER 462' left of centerline, 15' AGL/817' MSL.  
 Pole 1376' from DER, 779' left of centerline, 68' AGL/870' MSL.  
 Multiple trees beginning 828' from DER, 15' left of centerline, 78' AGL/907' MSL.
- RWY 34R: Railroad 305' from DER, 5' right of centerline, 33' AGL/832' MSL.  
 Multiple trees beginning 325' from DER, 174' right of centerline, up to 122' AGL/921' MSL.  
 Building 424' from DER, 214' right of centerline, 32' AGL/831' MSL.  
 Multiple trees beginning 781' from DER, 110' left of centerline 62' AGL/891' MSL.

(NARRATIVE ON FOLLOWING PAGE)

NOTE: Chart not to scale.

# CANOGA NINE DEPARTURE

SW-3, 11 MAR 2010 to 08 APR 2010

SW-3, 11 MAR 2010 to 08 APR 2010