

# LOC/NDB RWY 5

SEYMOUR/ FREEMAN MUNI (SEFR)

LOC I-SER <b>108.5</b>	APP CRS <b>046°</b>	Rwy ldg TDZE Apt Elev	<b>5500</b> <b>575</b> <b>583</b>
---------------------------	------------------------	-----------------------------	---

**NA** If local altimeter setting not received, use Louisville Intl -Standford Field altimeter setting and increase all MDAs 120 feet. Inoperative table does not apply to Cat C. Visibility reduction by helicopters NA.

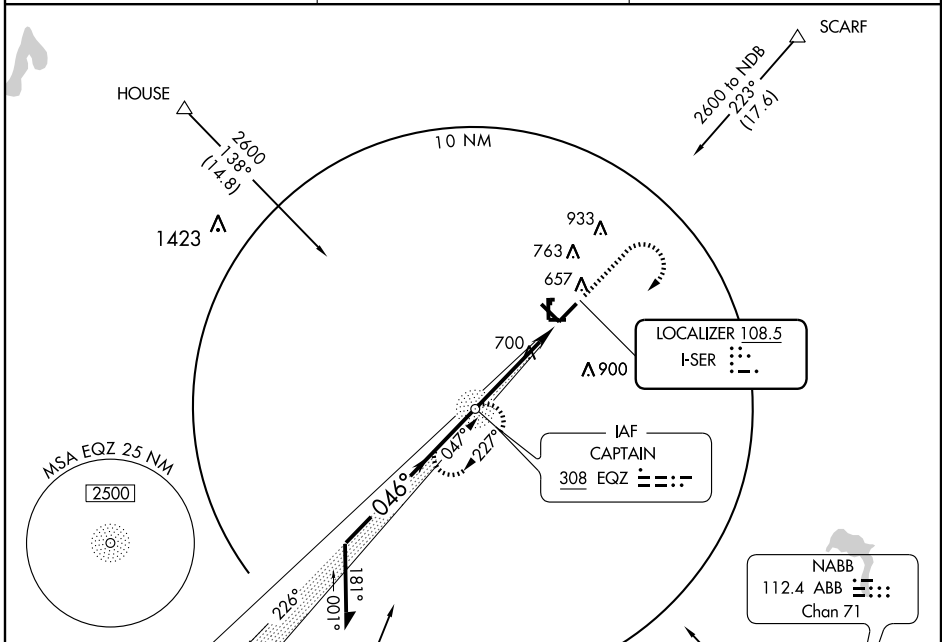
ODALS

MISSED APPROACH: Climb to 2600, then right turn direct EQZ NDB and hold.

AWOS-3  
**119.425**

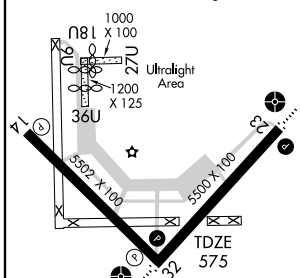
INDIANAPOLIS CENTER  
**124.775 269.45**

UNICOM  
**122.8 (CTAF)**

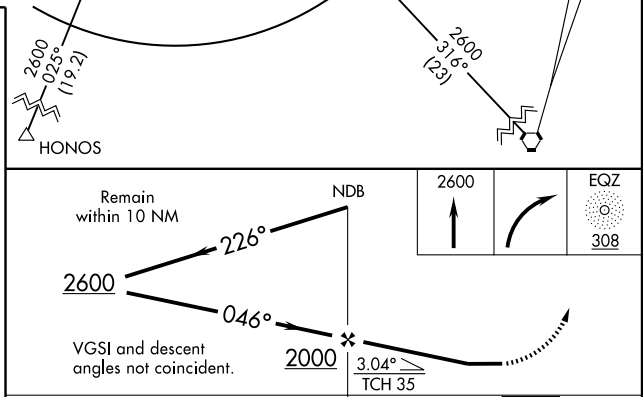


ELEV 583	Rwy 18U ldg 1000'
	Rwy 36U ldg 800'
	Rwy 9U ldg 880'

MIRL Rwy 5-23 and 14-32  
REIL Rwy 5, 14, 23 and 32



FAF to MAP 4.3 NM					
Knots	60	90	120	150	180
Min:Sec	4:18	2:52	2:09	1:43	1:26



CATEGORY	A	B	C	D
S-5	1000-3/4 425 (500-3/4)		1000-1 1/4 425 (500-1 1/4)	
CIRCLING	1000-1 417 (500-1)	1040-1 457 (500-1)	1120-1 1/2 537 (600-1 1/2)	1280-2 1/4 697 (700-2 1/4)

EC-2, 11 MAR 2010 to 08 APR 2010

EC-2, 11 MAR 2010 to 08 APR 2010