

NDB RWY 5

SEYMOUR/ FREEMAN MUNI (SEFR)

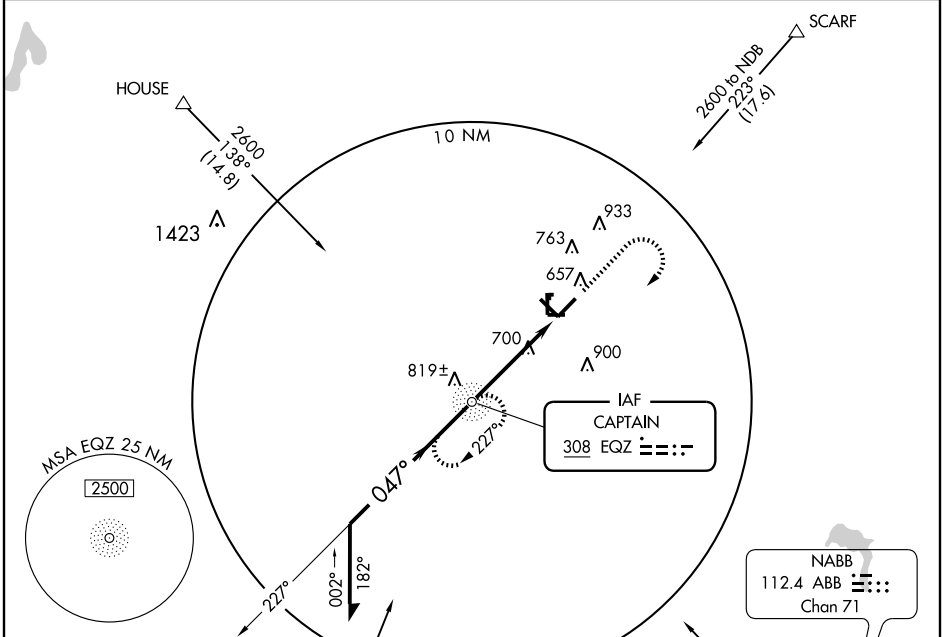
NDB EQZ 308	APP CRS 047°	Rwy Idg TDZE Apt Elev	5500 575 583
-----------------------	------------------------	-----------------------------	---

▼ If local altimeter setting not received, use Louisville Intl-Standiford Fld altimeter setting and increase all MDAs 120 feet. Inoperative table does not apply to Cat C.
▲ NA Visibility reduction by helicopters NA.

ODALS
☉

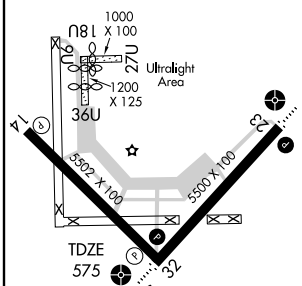
MISSED APPROACH: Climb to 2600, then right turn direct EQZ NDB and hold.

AWOS-3 119.425	INDIANAPOLIS CENTER 124.775 269.45	UNICOM 122.8 (CTAF) 0
--------------------------	--	---------------------------------

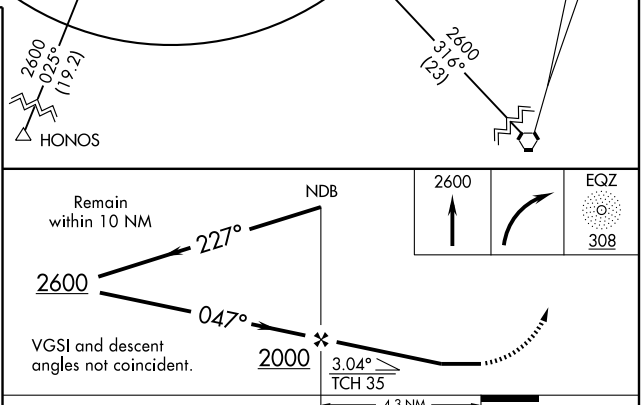


ELEV 583	Rwy 18U Idg 1000'
	Rwy 36U Idg 800'
	Rwy 9U Idg 880'

MIRL Rwy 5-23 and 14-32
REIL Rwy 5, 14, 23 and 32



FAF to MAP 4.3 NM					
Knots	60	90	120	150	180
Min:Sec	4:18	2:52	2:09	1:43	1:26



CATEGORY	A	B	C	D
S-5	1060- ³ / ₄	485 (500- ³ / ₄)	1060-1 ¹ / ₄ 485 (500-1 ¹ / ₄)	1060-1 ¹ / ₂ 485 (500-1 ¹ / ₂)
CIRCLING	1060-1	477 (500-1)	1120-1 ¹ / ₂ 537 (600-1 ¹ / ₂)	1280-2 ¹ / ₄ 697 (700-2 ¹ / ₄)

EC-2, 11 MAR 2010 to 08 APR 2010

EC-2, 11 MAR 2010 to 08 APR 2010