

RNAV (GPS) RWY 14

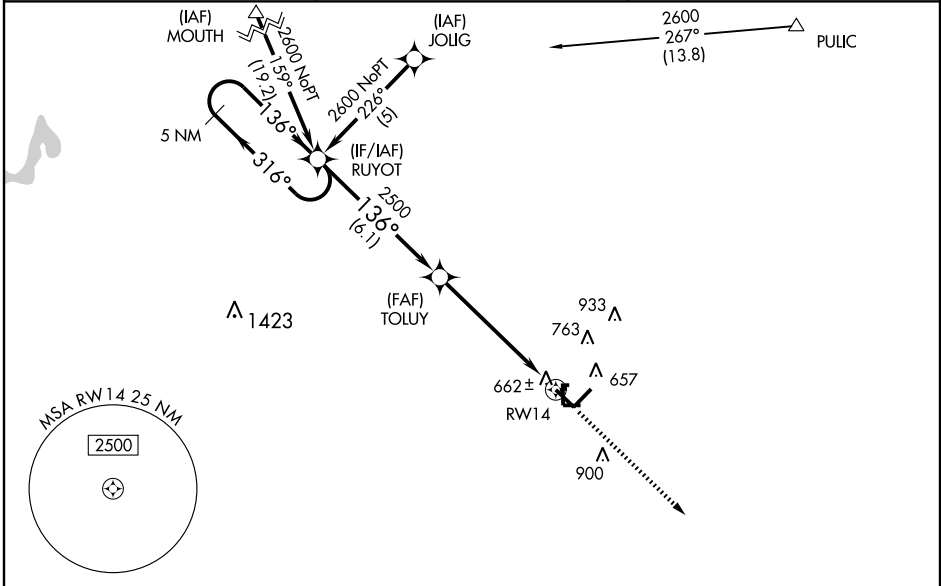
SEYMOUR/FREEMAN MUNI (SEFR)

WAAS CH 58003 W14A	APP CRS 136°	Rwy Idg 5502 TDZE 583 Apt Elev 583
--	------------------------	---

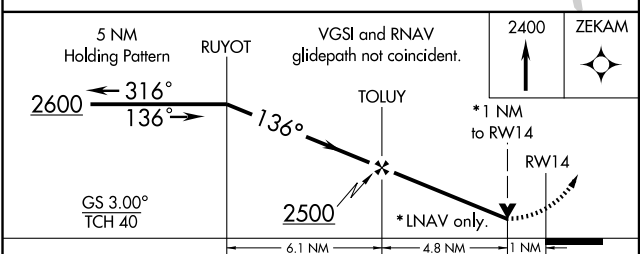
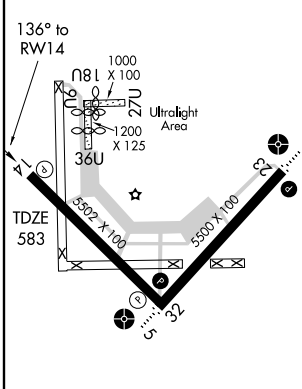
▼ If local altimeter setting not received, use Louisville Intl - Standiford Field altimeter setting and increase all DAs/MDAs 120 feet. VDP NA when using Louisville Intl - Standiford Field altimeter setting. Baro-VNAV NA when using Louisville Intl - Standiford Field altimeter setting. For uncompensated Baro-VNAV systems, LNAV/VNAV NA below -16°C (4°F) or above 48°C (118°F). DME/DME RNP-0.3 NA. Visibility reduction by helicopters NA.

▲ NA MISSED APPROACH: Climb to 2400 direct ZEKAM and hold.

AWOS-3 119.425	INDIANAPOLIS CENTER 124.775 269.45	UNICOM 122.8 (CTAF) 0
--------------------------	--	---------------------------------



ELEV 583	Rwy 18U Idg 1000'
	Rwy 36U Idg 800'
	Rwy 9U Idg 880'



CATEGORY	A	B	C	D
LPV DA		909-1¼	326 (400-1¼)	
LNAV/VNAV DA		934-1¼	351 (400-1¼)	
LNAV MDA		920-1	337 (400-1)	
CIRCLING	980-1 397 (400-1)	1040-1 457 (500-1)	1120-1½ 537 (600-1½)	1280-2¼ 697 (700-2¼)

MIRL Rwy 5-23 and 14-32
REIL Rwy 5, 14, 23 and 32

EC-2, 11 MAR 2010 to 08 APR 2010

EC-2, 11 MAR 2010 to 08 APR 2010