

ILS or LOC RWY 17L

WACO/TSTC WACO (CNW)

LOC I-CNW 110.7	APP CRS 171°	Rwy ldg 8600	TDZE 470
		Apt Elev 470	

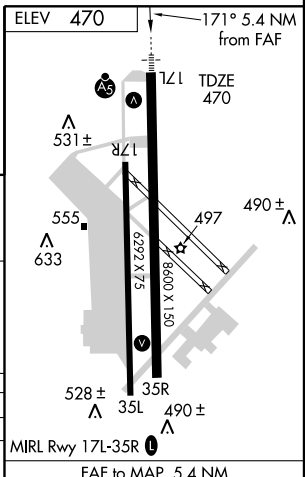
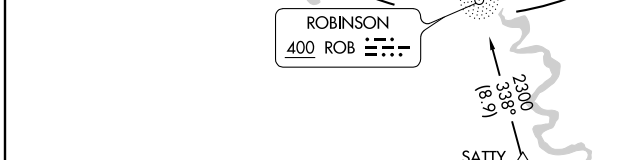
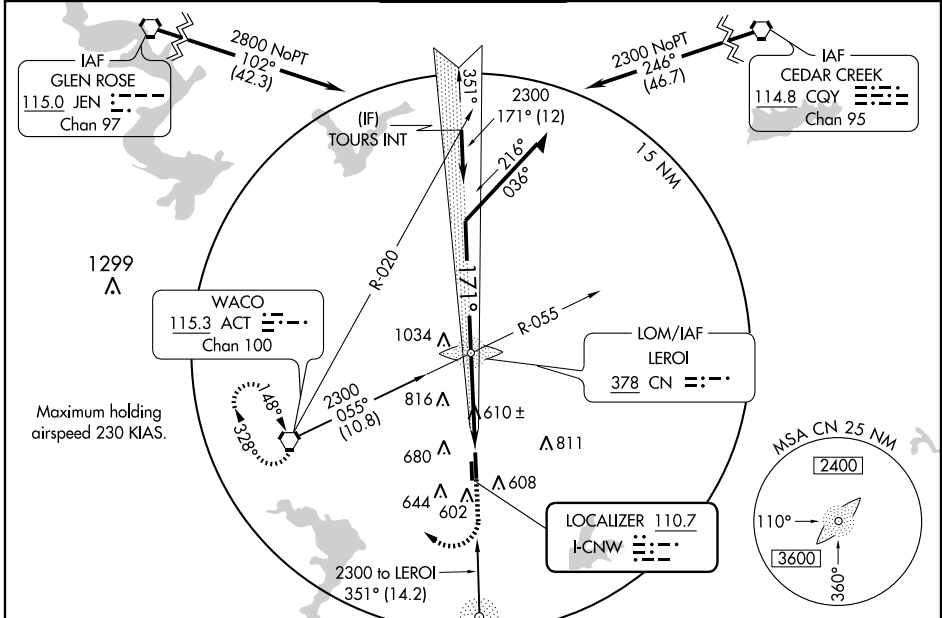
▼ For inoperative MALSR, increase S-ILS 17L Cat E visibility to 3/4, and S-LOC-17L Cat E to 1 1/4. When local altimeter setting not received, use Waco Rgnl altimeter setting and increase all DA 26 feet and all MDA 40 feet. Increase S-LOC 17L Cats C/D/E visibility 1/4 mile and circling Cat E 1/4 mile.

▲ ASR

MALSR

MISSED APPROACH: Climb to 2200 then climbing right turn to 4000 direct ACT VORTAC and hold. (TACAN aircraft continue via ACT R-305 to IGORR/ACT 14 DME and hold S, RT, 305° inbound)

AWOS-3 134.225	WACO APP CON * 127.65 227.125	TSTC TOWER * 124.0 (CTAF) 255.7	GND CON 121.7	UNICOM 122.95
--------------------------	---	---	-------------------------	-------------------------



Remain within 10 NM	LOM	2200	4000	ACT
	2251	↑	↷	115.3
GS 3.00° TCH 52	2300	Procedure turn NA for Cat E.		
	171°	5.4 NM		
	2300			

CATEGORY	A	B	C	D	E
S-ILS 17L	670-1/2 200 (200-1/2)				
S-LOC 17L	860-1/2 390 (400-1/2)		860-3/4 390 (400-3/4)		
CIRCLING	940-1 470 (500-1)	960-1 490 (500-1)	1040-1 1/2 570 (600-1 1/2)	1040-2 570 (600-2)	1180-2 1/2 710 (800-2 1/2)
MIRL Rwy 17L-35R					
FAF to MAP 5.4 NM					
Knots	60	90	120	150	180
Min:Sec	5:24	3:36	2:42	2:10	1:48

SC-3, 11 MAR 2010 to 08 APR 2010

SC-3, 11 MAR 2010 to 08 APR 2010