

ILS RWY 16L (CAT III)

SEATTLE-TACOMA INTL (SEA)

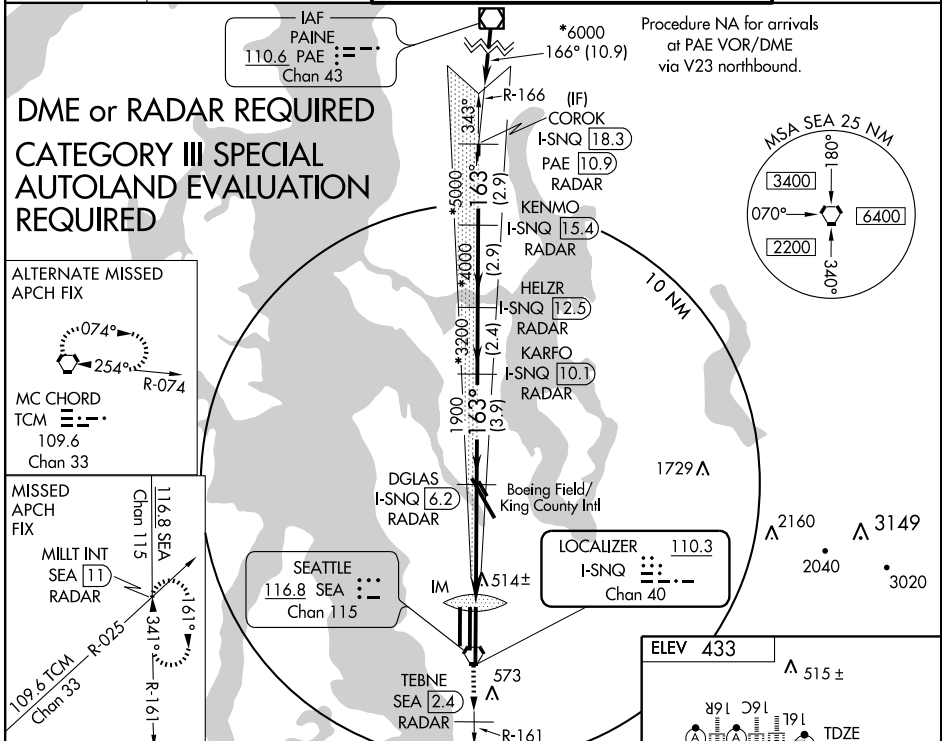
LOC/DME I-SNQ 110.3 Chan 40	APP CRS 163°	Rwy Idg TDZE 433 Apt Elev 433	11901
--	------------------------	---	--------------

DME or RADAR required.



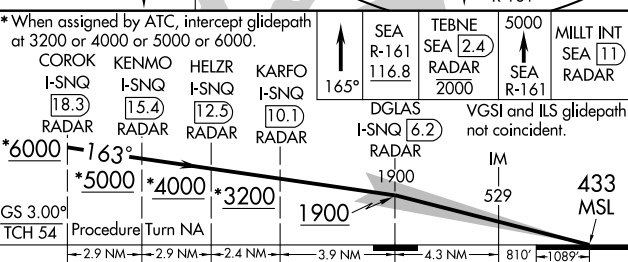
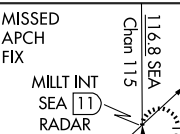
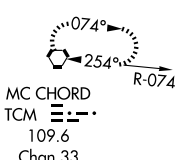
MISSED APPROACH: Climb heading 165° and SEA VORTAC R-161 to cross TEBNE/SEA 2.4 DME/RADAR at or below 2000, then climb to 5000 via SEA VORTAC R-161 to MILLT INT/SEA 11 DME/RADAR and hold, continue climb-in-hold to 5000.

ATIS 118.0	SEATTLE APP CON 133.65 273.45	SEATTLE TOWER 119.9 239.3 (Rwys 16C/34C, 16L/34R) 120.95 239.3 (Rwy 16R/34L)	GND CON 121.7
----------------------	---	--	-------------------------



DME or RADAR REQUIRED
CATEGORY III SPECIAL
AUTOLAND EVALUATION
REQUIRED

ALTERNATE MISSED APCH FIX



SEA R-161 116.8	TEBNE SEA 2.4 RADAR 2000	5000 MILLT INT SEA 11 RADAR
DGLAS I-SNQ 6.2 RADAR	VGSJ and ILS glidepath not coincident.	
GS 3.00° TCH 54'	Procedure	Turn NA
-2.9 NM		-2.9 NM
-2.4 NM		-2.4 NM
-3.9 NM		-3.9 NM
-4.3 NM		-4.3 NM
810'		1089'

CATEGORY	A	B	C	D
S-ILS 16L	NA		CAT IIIa	RVR 07
S-ILS 16L	NA		CAT IIIb	RVR 03
S-ILS 16L			CAT IIIc	NA

CATEGORY III ILS - SPECIAL AIRCREW & AIRCRAFT CERTIFICATION REQUIRED

