

IDAHO FALLS, IDAHO

AL-590 (FAA)

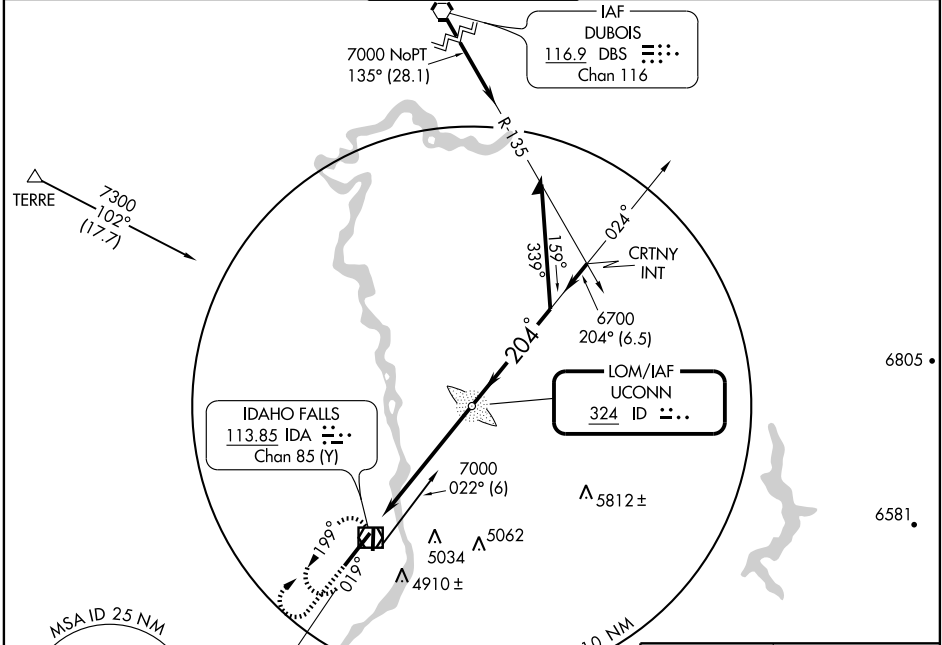
# NDB RWY 20

IDAHO FALLS RGNL (IDA)

LOM ID <b>324</b>	APP CRS <b>204°</b>	Rwy Idg <b>9002</b>
		TDZE <b>4735</b>
		Apt Elev <b>4744</b>

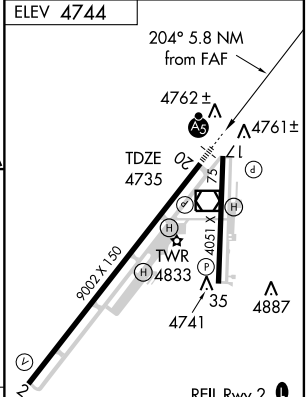
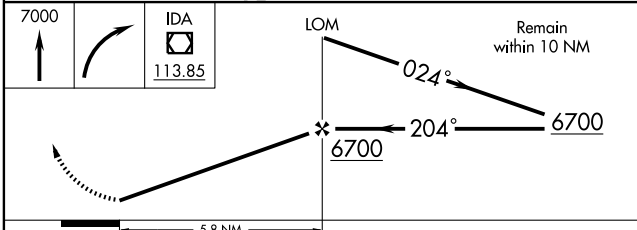
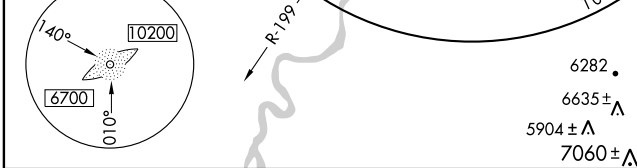
	MISSED APPROACH: Climb to 7000 then right turn direct IDA VOR/DME and hold.

ATIS <b>135.325</b>	SALT LAKE CENTER <b>128.35 239.25</b>	IDAHO FALLS TOWER ★ <b>118.5 (CTAF) 257.8</b>	GND CON <b>121.7</b>	UNICOM <b>122.95</b>
------------------------	--	--	-------------------------	-------------------------



NW-1, 11 MAR 2010 to 08 APR 2010

NW-1, 11 MAR 2010 to 08 APR 2010



CATEGORY	A	B	C	D
S-20	5220/40 485 (500-¾)		5220/60 485 (500-1½)	
CIRCLING	5220-1	476 (500-1)	5260-1½ 516 (600-1½)	5340-2 596 (600-2)

FAF to MAP 5.8 NM					
Knots	60	90	120	150	180
Min:Sec	5:48	3:52	2:54	2:19	1:56

IDAHO FALLS, IDAHO  
Amdt 10C 09239

43°31'N-112°04'W

# IDAHO FALLS RGNL (IDA)

## NDB RWY 20