

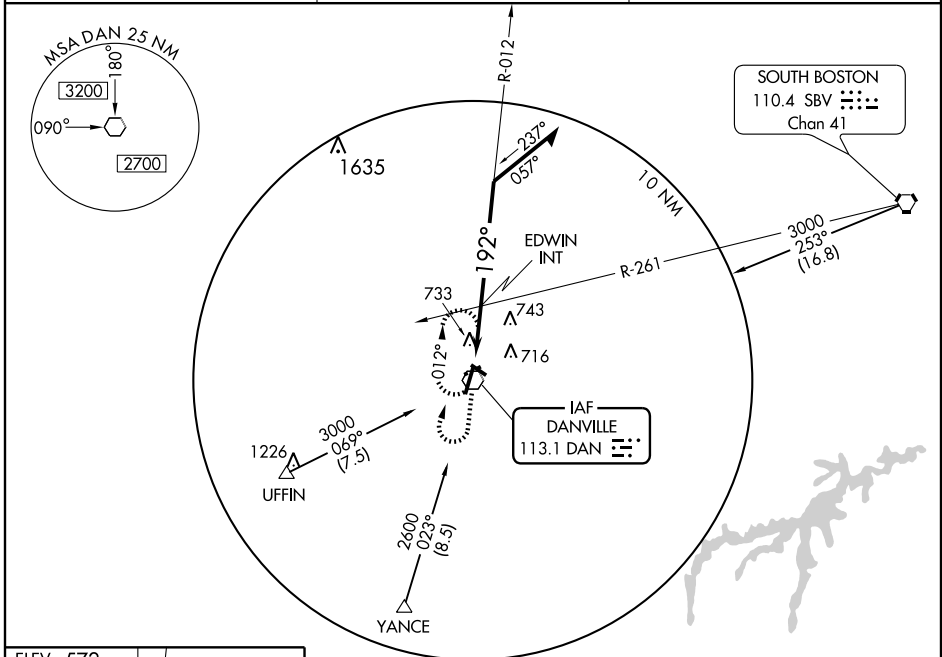
VOR RWY 20

DANVILLE RGNL (DAN)

VOR DAN 113.1	APP CRS 192°	Rwy Idg TDZE Apt Elev	5600 568 572
-------------------------	------------------------	-----------------------------	---

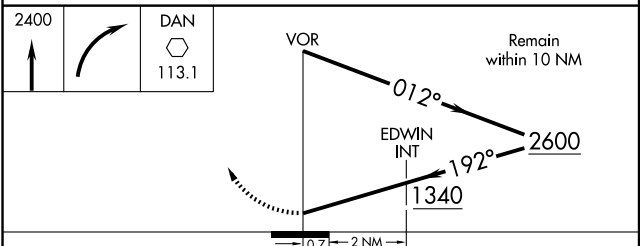
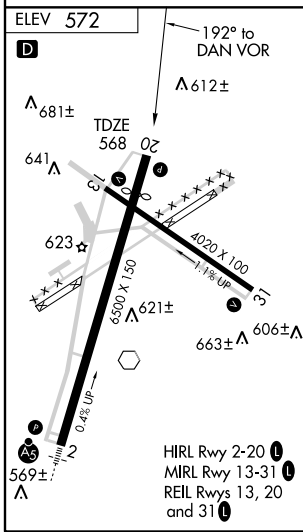
▽ If local altimeter setting not received, procedure not authorized. **▲** MISSED APPROACH: Climb to 2400 then right turn direct DAN VOR and hold.

ASOS 128.125	WASHINGTON CENTER 124.05 307.0	UNICOM 123.05 (CTAF) 0
------------------------	--	----------------------------------



NE-3, 11 MAR 2010 to 08 APR 2010

NE-3, 11 MAR 2010 to 08 APR 2010



CATEGORY	A	B	C	D
S-20	1340-1 772 (800-1)	1340-1¼ 772 (800-1¼)	1340-2¼ 772 (800-2¼)	1340-2½ 772 (800-2½)
CIRCLING	1340-1 768 (800-1)	1340-1¼ 768 (800-1¼)	1340-2¼ 768 (800-2¼)	1340-2½ 768 (800-2½)
EDWIN INT MINIMUMS				
S-20	1000-1	432 (500-1)	1000-1¼ 432 (500-1¼)	1000-1½ 432 (500-1½)
CIRCLING	1060-1	488 (500-1)	1060-1½ 488 (500-1½)	1140-2 568 (600-2)