

BOWLING GREEN, KENTUCKY

AL-605 (FAA)

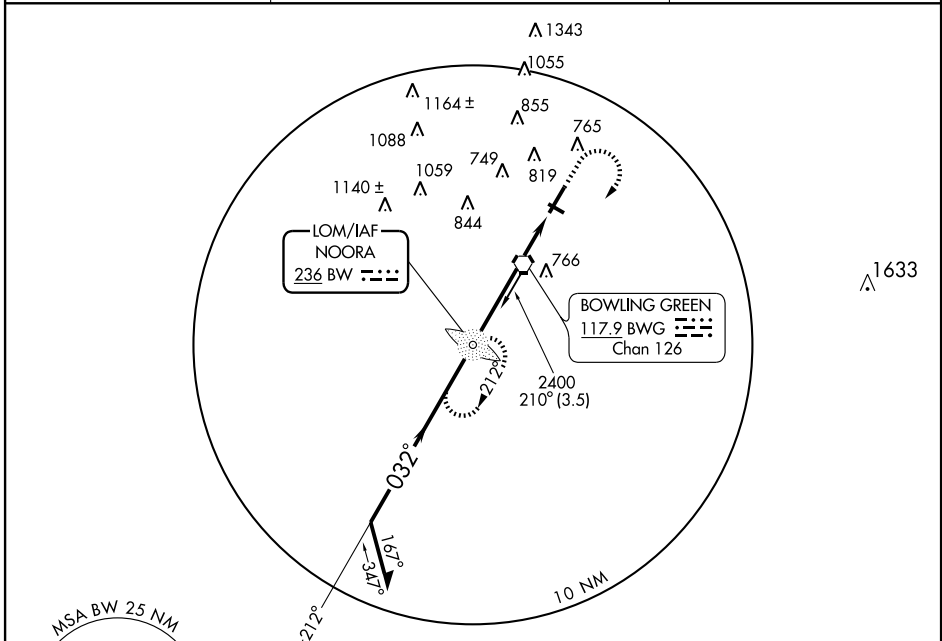
# NDB RWY 3

BOWLING GREEN-WARREN COUNTY RGNL (BWG)

LOM BW <b>236</b>	APP CRS <b>032°</b>	Rwy ldg TDZE Apt Elev	<b>6500</b> <b>547</b> <b>547</b>
----------------------	------------------------	-----------------------------	---

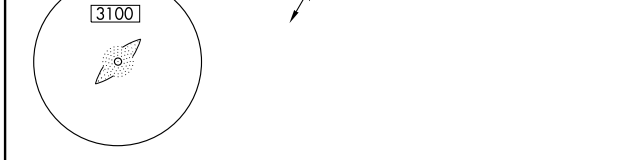
**NA** MISSED APPROACH: Climb to 2000 then climbing right turn to 2400 direct BW LOM and hold.

ASOS <b>127.825</b>	MEMPHIS CENTER <b>133.85 317.6</b>	CTAF <b>123.0</b>
------------------------	---------------------------------------	----------------------



SE-1, 11 MAR 2010 to 08 APR 2010

SE-1, 11 MAR 2010 to 08 APR 2010



ELEV 547

Rwy 30 ldg 3606'

REIL Rws 3 and 21

MIRL Rwy 12-30

HIRL Rwy 3-21

2000	2400	BW 236
------	------	-----------

CATEGORY	A	B	C	D
S-3	1120-1	573 (600-1)	1120-1½ 573 (600-1½)	1120-1¾ 573 (600-1¾)
CIRCLING	1120-1	573 (600-1)	1120-1½ 573 (600-1½)	1120-2 573 (600-2)

Knots	60	90	120	150	180
Min:Sec	5:30	3:40	2:45	2:12	1:50

FAF to MAP 5.5 NM

BOWLING GREEN, KENTUCKY  
Amdt 1 07354

BOWLING GREEN-WARREN COUNTY RGNL (BWG)  
NDB RWY 3  
36° 58' N-86° 25' W