

# RNAV (GPS) RWY 3

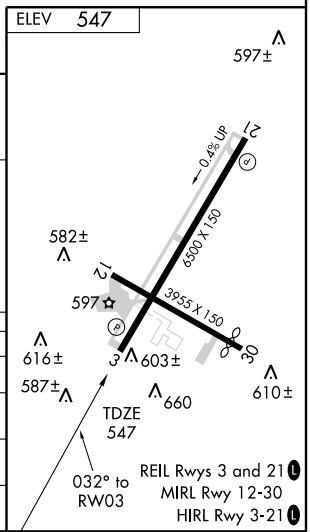
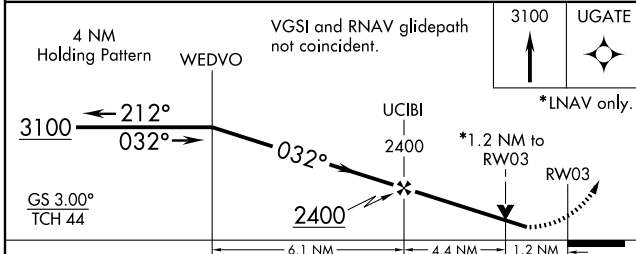
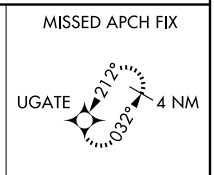
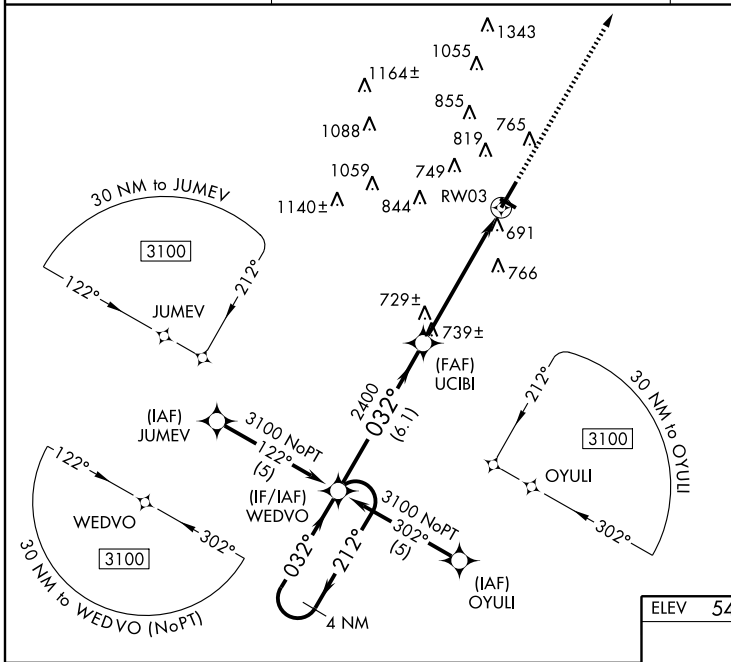
BOWLING GREEN-WARREN COUNTY RGNL (BWG)

WAAS CH	APP CRS	Rwy Idg	6500
69510	032°	TDZE	547
W03A		Apt Elev	547

Baro-VNAV NA when using Glasgow altimeter setting. For uncompensated Baro-VNAV systems, LNAV/VNAV NA below -16° C (4° F) or above 48° C (118° F). DME/DME RNP-0.3 NA.  
 Visibility reduction by helicopters NA. When local altimeter setting not received, use Glasgow altimeter setting and increase all DA 76 feet, all MDA 80 feet, and LPV all Cats. visibility ½ mile, LNAV/VNAV all Cats. ¼ mile, LNAV Cat. C and D ¼ mile and Circling Cat. C ¼ mile.  
 VDP NA when using Glasgow altimeter setting.

MISSED APPROACH:  
 Climb to 3100 direct UGATE and hold.

ASOS 127.825	MEMPHIS CENTER 133.85 317.6	CTAF 123.0
-----------------	--------------------------------	---------------



CATEGORY	A	B	C	D
LPV DA		797-¾	250 (300-¾)	
LNAV/VNAV DA		974-1½	427 (500-1½)	
LNAV MDA	980-1	433 (500-1)	980-1¼ 433 (500-1¼)	980-1½ 433 (500-1½)
CIRCLING	1000-1 453 (500-1)	1120-1 573 (600-1)	1120-1½ 573 (600-1½)	1120-2 573 (600-2)

SE-1, 19 NOV 2009 to 17 DEC 2009

SE-1, 19 NOV 2009 to 17 DEC 2009