

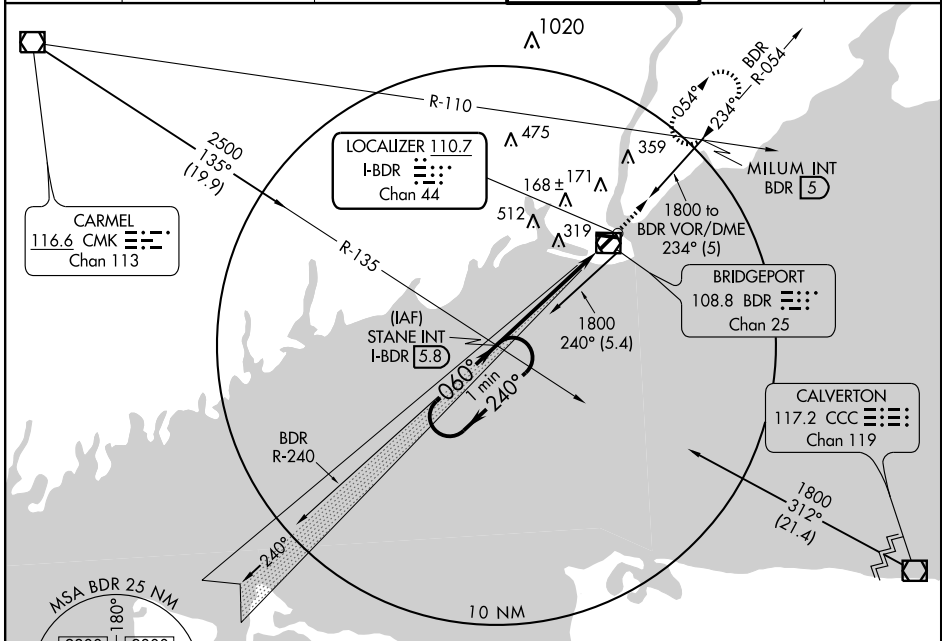
# ILS RWY 6

BRIDGEPORT/ IGOR I. SIKORSKY MEMORIAL (BDR)

LOC/DME I-BDR <b>110.7</b> Chan <b>44</b>	APP CRS <b>060°</b>	Rwy Idg <b>4677</b> TDZE <b>7</b> Apt Elev <b>10</b>
---	------------------------	--

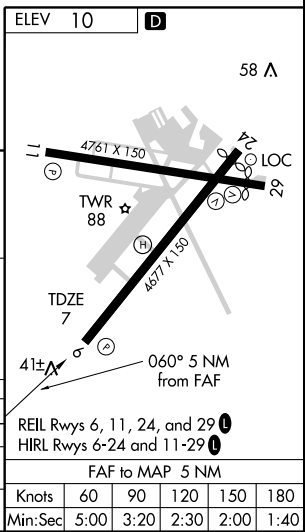
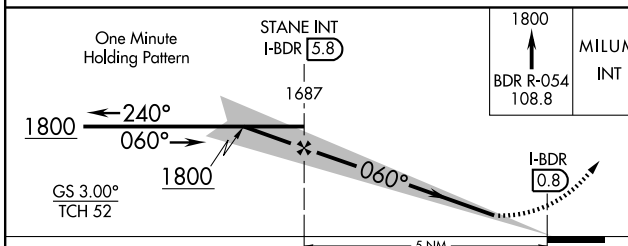
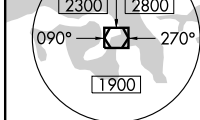
MISSED APPROACH: Climb to 1800 via BDR-054 to MILUM Int and hold.

ATIS <b>119.15</b>	NEW YORK APP CON <b>124.075 343.65</b>	BRIDGEPORT RADIO <b>122.2</b>	BRIDGEPORT TOWER* <b>120.90</b> (CTAF) <b>257.8</b>	GND CON <b>121.9 257.8</b>	CLNC DEL <b>121.75</b>
-----------------------	---	----------------------------------	--	-------------------------------	---------------------------



NE-1, 19 NOV 2009 to 17 DEC 2009

NE-1, 19 NOV 2009 to 17 DEC 2009



CATEGORY	A	B	C	D
S-ILS 6		307 - 1	300 (300-1)	
S-LOC 6		380-1	373 (400-1)	380-1½ 373 (400-1½)
CIRCLING	420-1 410 (500-1)	620-1 610 (700-1)	620-1¾ 610 (700-1¾)	820-2½ 810 (900-2½)

Knots	60	90	120	150	180
Min:Sec	5:00	3:20	2:30	2:00	1:40