

# RNAV (GPS) RWY 22

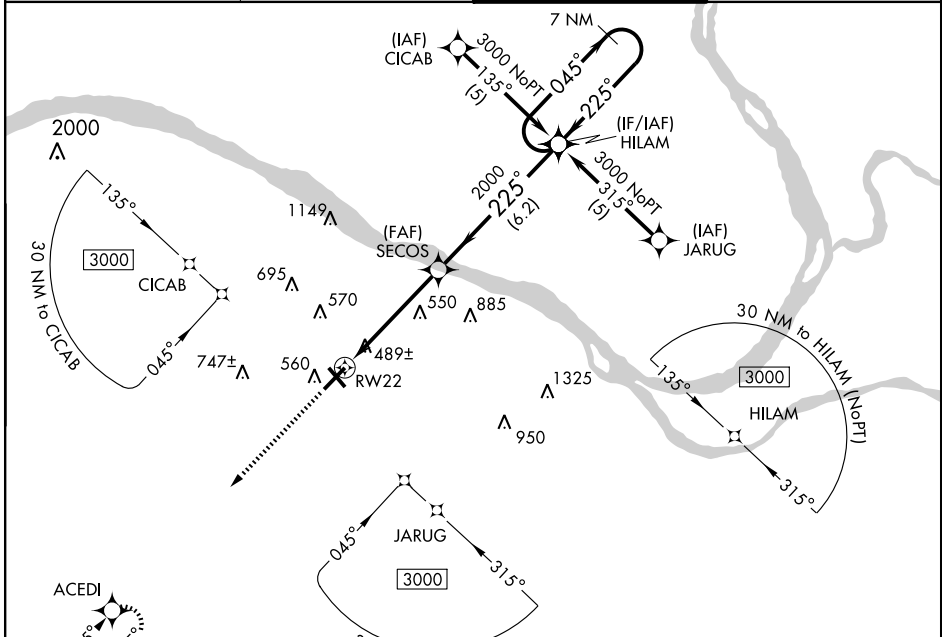
PADUCAH/BARKLEY RGNL (PAH)

WAAS CH <b>49001</b> <b>W22A</b>	APP CRS <b>225°</b>	Rwy ldg <b>6499</b> TDZE <b>401</b> Apt Elev <b>410</b>
--	------------------------	---

▼ DME/DME RNP-0.3 NA. If local altimeter setting not received, use Mayfield altimeter setting and increase all DAs 62 feet and all MDAs 80 feet. For uncompensated Baro-VNAV systems, ▲ LNAV/VNAV NA below -15°C (5°F) or above 48°C (118°F). Baro-VNAV NA with Mayfield altimeter setting. Visibility reduction by helicopters NA.

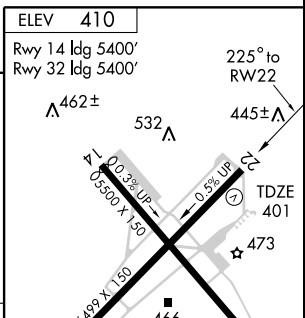
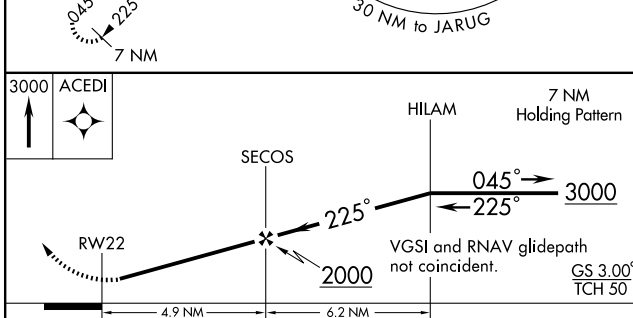
MISSED APPROACH: Climb to 3000 direct ACEDI and hold.

ASOS <b>118.375</b>	MEMPHIS CENTER <b>133.65 292.15</b>	PADUCAH TOWER ★ <b>119.6(CTAF) 306.9</b>	GND CON <b>121.7 306.9</b>
------------------------	--	---	-------------------------------



SE-1, 11 MAR 2010 to 08 APR 2010

SE-1, 11 MAR 2010 to 08 APR 2010



CATEGORY	A	B	C	D
LPV DA	677-1 276 (300-1)			
LNAV/DA VNAV	789-1½ 388 (400-1½)			
LNAV MDA	800-1	399 (400-1)		800-1¼ 399 (400-1¼)
CIRCLING	900-1½	490 (500-1½)		960-2 550 (600-2)

ELEV 410
Rwy 14 ldg 5400'
Rwy 32 ldg 5400'
225° to RWY 22
0.0% I/P
0.5% I/P
TDZE 401
473
466
489
467±
HIRL Rwy 4-22
MIRL Rwy 14-32
REIL Rwy 22 and 32