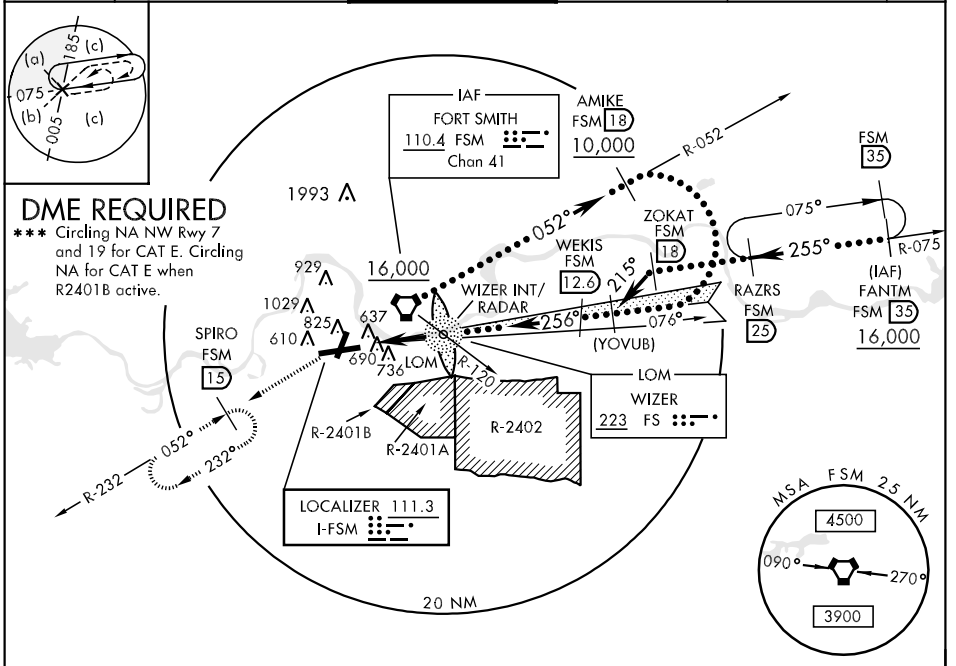


LOC I-FSM 111.3	APCH CRS 256°	Rwy Idg TDZE Arprt Elev 8000 446 469	JAL-631 [USAF]	FORT SMITH REGIONAL (KFMS)
---------------------------	-------------------------	--	----------------	----------------------------

▼ * When ALS inop, increase CAT E RVR to 40, vis to 3/4 mile. **MALSR**
****** When ALS inop, increase CAT E vis to 1 1/4 mile.
▲ NA When control tower closed.

ATIS ★ 126.3	RAZORBACK APP CON 120.9 343.75	FORT SMITH TOWER ★ 118.3 (CTAF) 323.175	GND CON 121.9 275.8	CLNC DEL 133.85 278.3	ASR
------------------------	--	---	-------------------------------	---------------------------------	-----

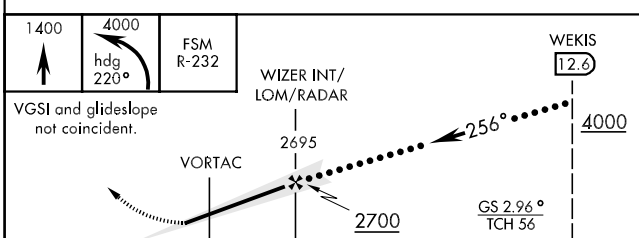


DME REQUIRED
 *** Circling NA NW Rwy 7 and 19 for CAT E. Circling NA for CAT E when R2401B active.

SC-1, 19 NOV 2009 to 17 DEC 2009

SC-1, 19 NOV 2009 to 17 DEC 2009

EMERG SAFE ALT 100 NM 4500 FROM FSM VORTAC



CATEGORY	C	D	E
S-ILS *	646/24 200 (200-1/2)		
S-LOC **	960/50 514 (600-1)	960/60 514 (600-1 1/4)	
CIRCLING ***	1140-2 671 (700-2)	1140-2 1/4 671 (700-2 1/4)	1200-2 1/2 731 (800-2 1/2)
S-ASR 25	1040/50 594 (600-1)	1040/60 594 (600-1 1/4)	1040-1 1/2 594 (600-1 1/2)

