

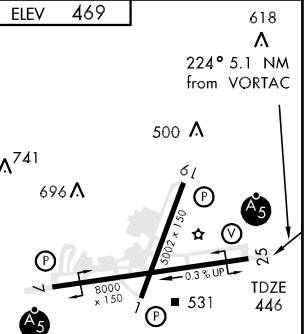
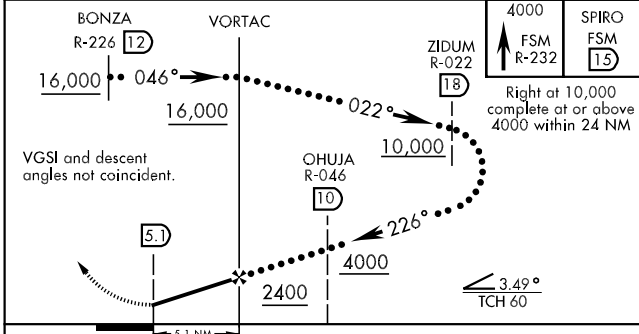
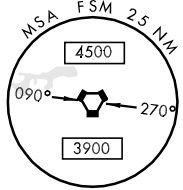
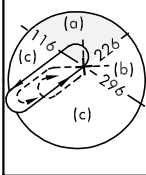
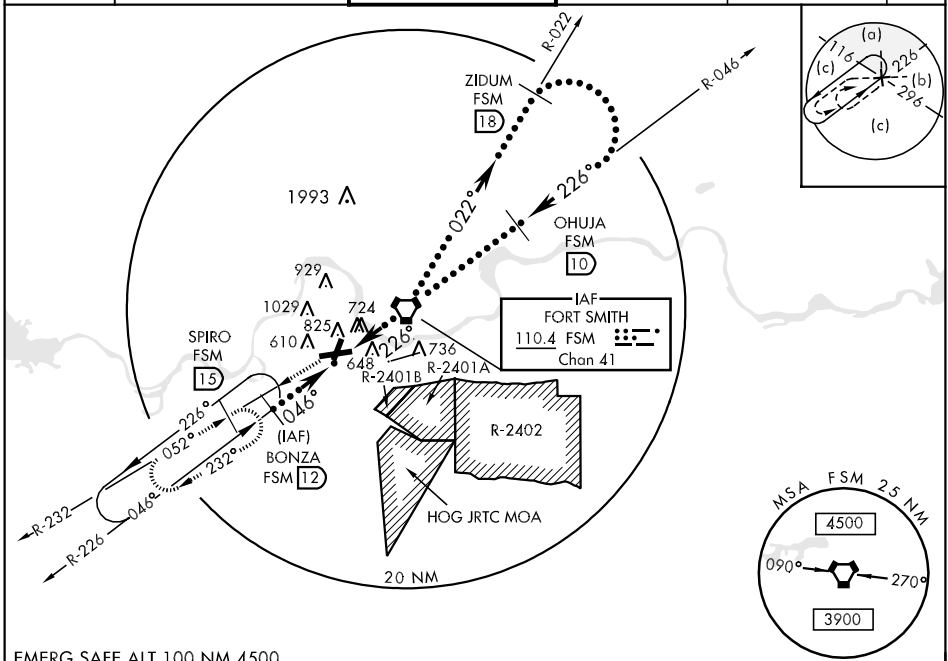
VORTAC FSM 110.4 Chan 41	APCH CRS 226°	Rwy Idg TDZE Arpt Elev 8000 446 469	JAL-631 [USAF]	FORT SMITH REGIONAL (KFSM)
--	-------------------------	---	----------------	----------------------------

V * Circling NA NW Rwy 7 and 19 for CAT E.
Circling NA for CAT E when R-2401B is active.
NA When Control Tower closed.



MISSED APPROACH: Climb to 4000 via FSM R-232 to SPIRO (FSM R-232/15 DME) and hold, continue climb in hold to 4000.

ATIS ★ 126.3	RAZORBACK APP CON 120.9 343.75	FORT SMITH TOWER ★ 118.3 (CTAF) 0 323.175	GND CON 121.9 275.8	CLNC DEL 133.85 278.3	ASR
------------------------	--	---	-------------------------------	---------------------------------	-----



CATEGORY	C	D	E
S-25	980-1½ 534 (600-1½)	980-1¾ 534 (600-1¾)	980-2 534 (600-2)
CIRCLING *	1140-2 671 (700-2)	1140-2¼ 671 (700-2¼)	1200-2½ 731 (800-2½)
S-ASR 25	1040/50 594 (600-1)	1040/60 594 (600-1¼)	1040-1½ 594 (600-1½)

MIRL Rwy 1-19
HIRL Rwy 7-25

SC-1, 19 NOV 2009 to 17 DEC 2009

SC-1, 19 NOV 2009 to 17 DEC 2009