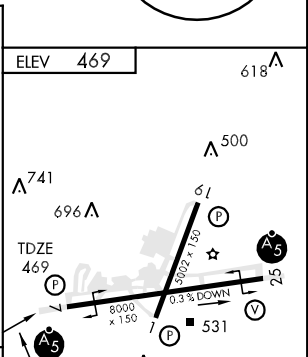
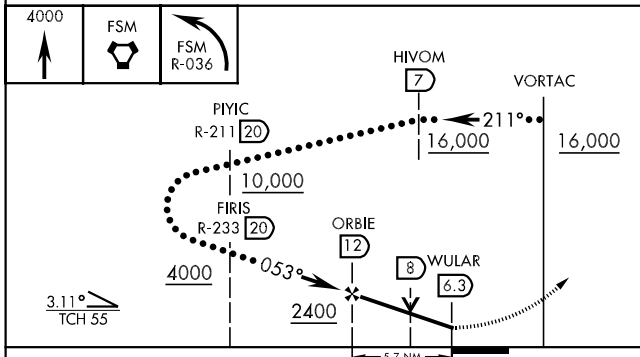
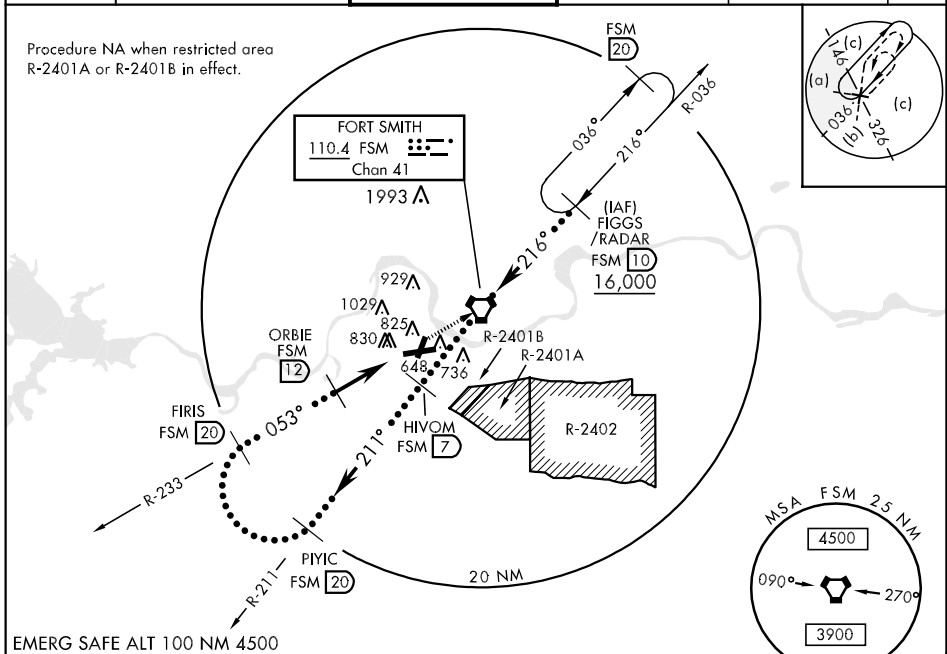


VORTAC FSM 110.4 Chan 41	APCH CRS 053°	Rwy Idg TDZE Arpt Elev 8000 469 469	JAL-631 [USAF]	FORT SMITH REGIONAL (KFSM)
--	-------------------------	---	----------------	----------------------------

▼ * Circling NA NW Rwy 7 and 19 for CAT E.	▲ NA When Control Tower closed.	MALS R A5	MISSED APPROACH: Climb to 4000 direct FSM VORTAC and via R-036 to FIGGS (FSM R-036/10 DME) and hold.
---	--	---------------------	--

ATIS ★ 126.3	RAZORBACK APP CON 120.9 343.75	FORT SMITH TOWER ★ 118.3 (CTAF) 0 323.175	GND CON 121.9 275.8	CLNC DEL 133.85 278.3	ASR
------------------------	--	---	-------------------------------	---------------------------------	-----



CATEGORY	C	D	E
S-7	1080-1 $\frac{3}{4}$ 611 (700-1 $\frac{3}{4}$)	1080-2 611 (700-2)	1080-2 $\frac{1}{4}$ 611 (700-2 $\frac{1}{4}$)
CIRCLING *	1140-2 671 (700-2)	1140-2 $\frac{1}{4}$ 671 (700-2 $\frac{1}{4}$)	1200-2 $\frac{1}{2}$ 731 (800-2 $\frac{1}{2}$)
S-ASR 7	1200-1 $\frac{1}{2}$ 731 (800-1 $\frac{1}{2}$)	1200-1 $\frac{3}{4}$ 731 (800-1 $\frac{3}{4}$)	1200-2 731 (800-2)

SC-1, 19 NOV 2009 to 17 DEC 2009

SC-1, 19 NOV 2009 to 17 DEC 2009