

ILS or LOC RWY 7

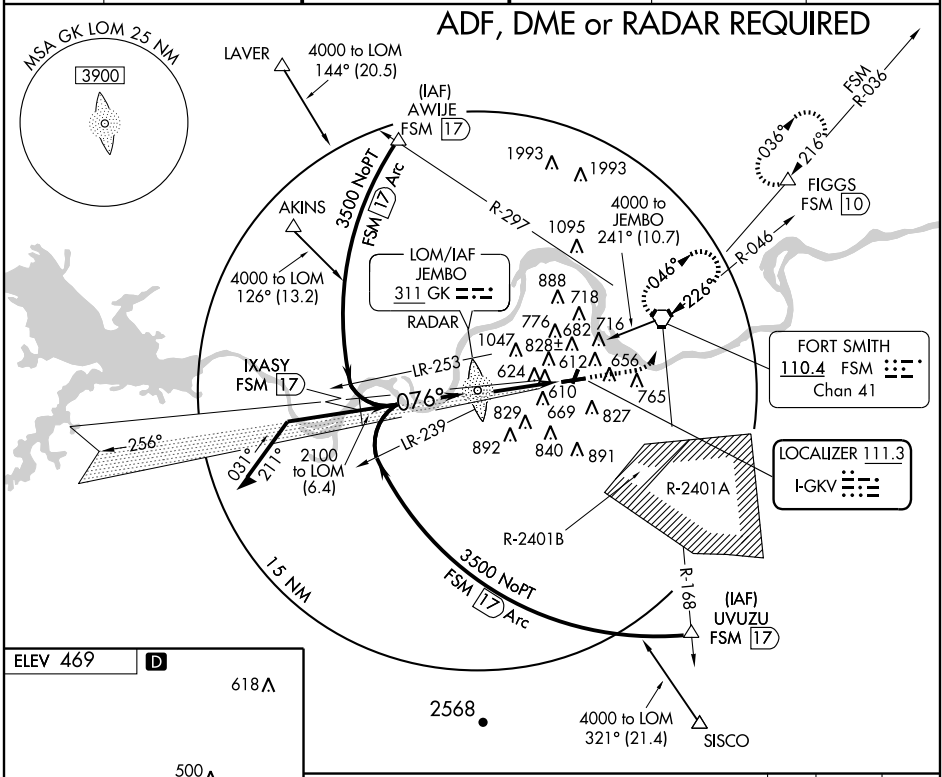
FORT SMITH RGNL (FSM)

LOC I-GKV 111.3	APP CRS 076°	Rwy Idg 8000
		TDZE 469
		Apt Elev 469

⚠ Circling not authorized NW of Rwy 7 and **⚠** 19 for Cat. E. Circling to Rwy 1 NA at night. ASR Circling Cat E NA when R-2401B active.

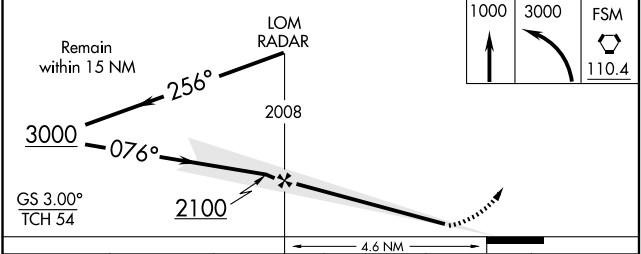
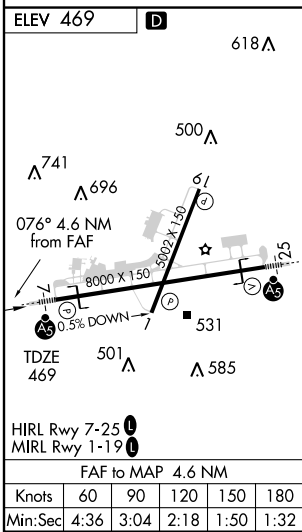
MALSR MISSED APPROACH: Climb to 1000, then climbing left turn to 3000 direct FSM VORTAC and hold.(TACAN aircraft continue climb to 4000 via R-036 to FIGGS 10 DME and hold, NE, RT, 216° inbound.)

ATIS 126.3	RAZORBACK APP CON * 120.9 343.75	FORT SMITH TOWER * 118.3 (CTAF) 0 323.175	GND CON 121.9 275.8	CLNC DEL 133.85 278.3	UNICOM 122.95
----------------------	--	---	-------------------------------	---------------------------------	-------------------------



SC-1, 11 MAR 2010 to 08 APR 2010

SC-1, 11 MAR 2010 to 08 APR 2010



CATEGORY	A	B	C	D	E
S-ILS 7	669-½ 200 (200-½)				
S-LOC 7	860-½	391 (400-½)	860-¾	391 (400-¾)	860-1
CIRCLING	1140-1	671 (700-1)	1140-2	1140-2¼	1200-2½
			671 (700-2)	671 (700-2¼)	731 (800-2½)