

# RNAV (GPS) RWY 7

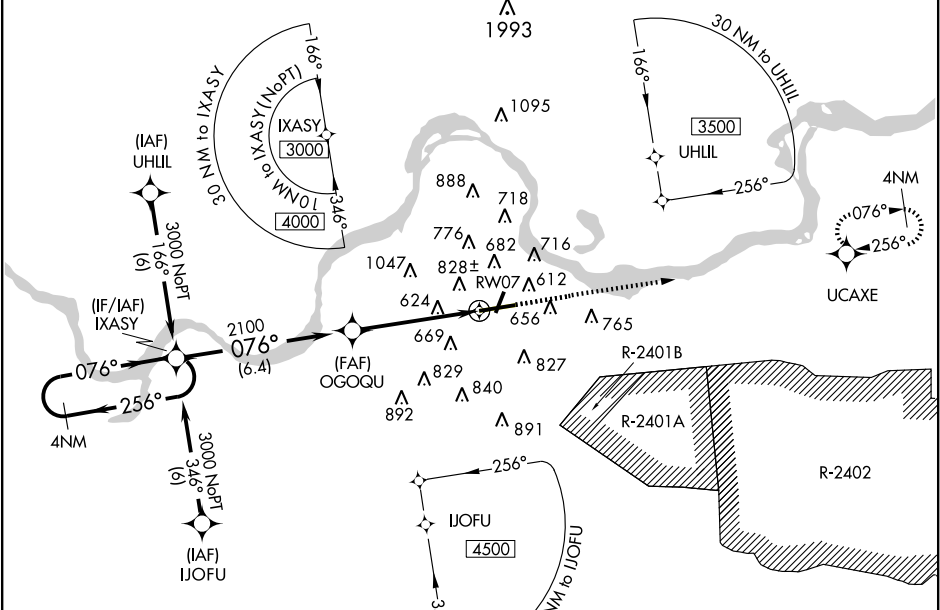
FORT SMITH RGNL (F<sup>SM</sup>)

APP CRS	Rwy Idg	<b>8000</b>
<b>076°</b>	TDZE	<b>469</b>
	Apt Elev	<b>469</b>

**⚠** Circling not authorized NW of Rwy 7 and 19 for Cat E. DME/DME RNP-0.3 NA. Circling to Rwy 1 NA at night. For uncompensated Baro-VNAV systems, LNAV/VNAV NA below -15°C (5°F) or above 54°C (130°F). When ALS inop, increase LNAV/VNAV and LNAV vis Cat E ½ mile. Circling Cat E NA when R-2401B active.

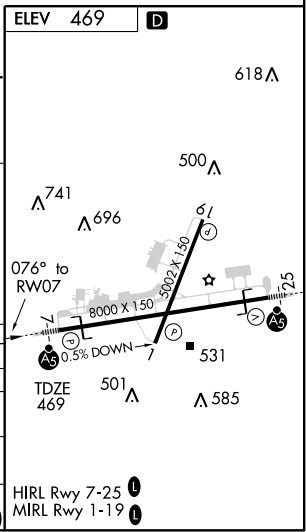
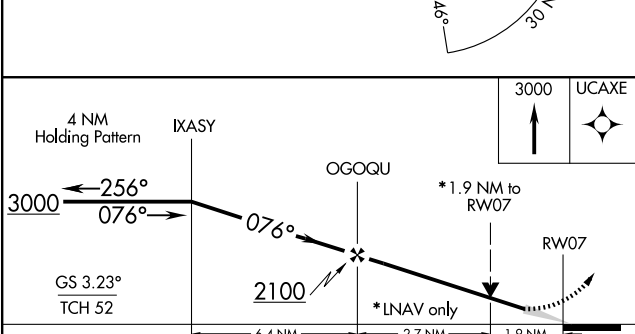
**MALSR**  
 MISSED APPROACH: Climb to 3000 direct UCAXE and hold.

ATIS <b>126.3</b>	RAZORBACK APP CON * <b>120.9 343.75</b>	FORT SMITH TOWER * <b>118.3 (CTAF) 0 323.175</b>	GND CON <b>121.9 275.8</b>	CLNC DEL <b>133.85 278.3</b>	UNICOM <b>122.95</b>
----------------------	--	---	-------------------------------	---------------------------------	-------------------------



SC-1, 19 NOV 2009 to 17 DEC 2009

SC-1, 19 NOV 2009 to 17 DEC 2009



CATEGORY	A	B	C	D	E
GLS DA			NA		
LNAV/VNAV DA	1085-1½ 616 (700-1½)				
LNAV MDA	1140-½ 671 (700-½)	1140-1½ 671 (700-1½)	1140-1¾ 671 (700-1¾)	1140-2 671 (700-2)	1140-2 671 (700-2)
CIRCLING	1140-1 671 (700-1)	1140-2 671 (700-2)	1140-2¼ 671 (700-2¼)	1200-2½ 731 (800-2½)	