

VOR/DME or TACAN RWY 7

FORT SMITH RGNL (FSM)

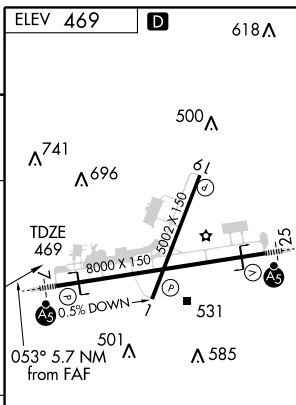
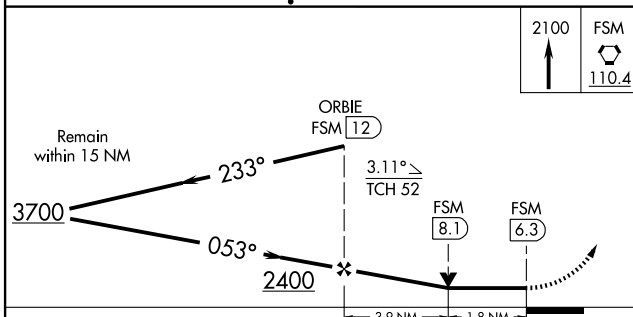
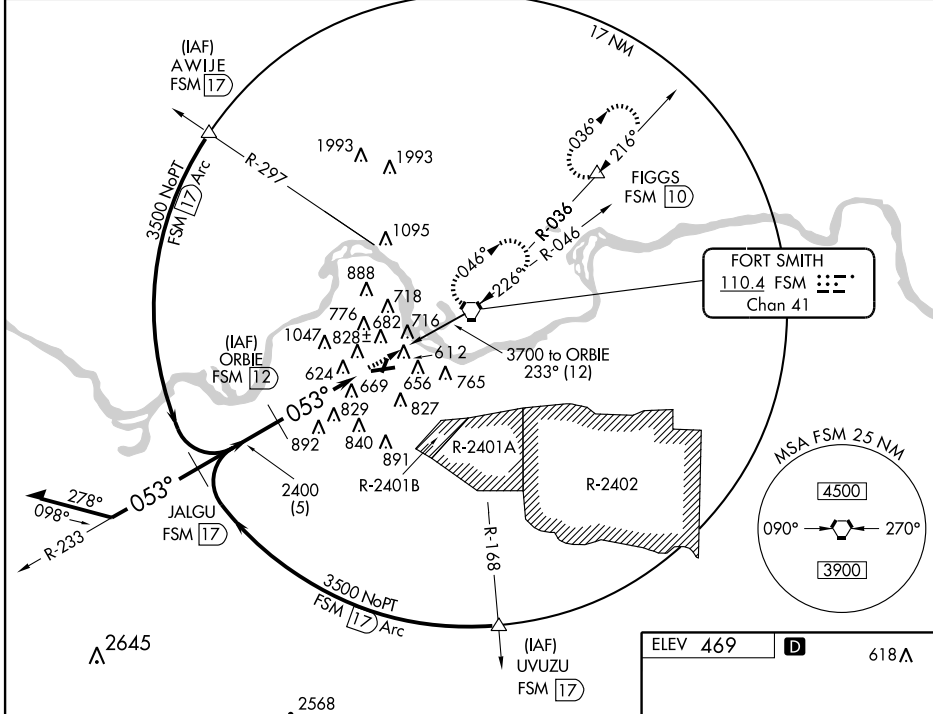
VORTAC FSM 110.4 Chan 41	APP CRS 053°	Rwy Idg TDZE 469 Apt Elev 469
--	------------------------	---

⚠ Inoperative table does not apply. Circling not authorized NW of Rws 7 and 19 for Cat E.
ASR Circling to Rwy 1 NA at night. Circling Cat E NA when R-2401B active.



MISSED APPROACH: Climb to 2100 direct FSM VORTAC and hold. (TACAN aircraft climbing left turn to 4000 direct FSM VORTAC then via R-036 to FIGGS 10 DME and hold northeast, right turn 216° inbound.)

ATIS 126.3	RAZORBACK APP CON * 120.9 343.75	FORT SMITH TOWER * 118.3 (CTAF) 323.175	GND CON 121.9 275.8	CLNC DEL 133.85 278.3	UNICOM 122.95
----------------------	--	---	-------------------------------	---------------------------------	-------------------------



CATEGORY	A	B	C	D	E
S-7	1080-1 611 (700-1)	1080-1 611 (700-1)	1080-1 3/4 611 (700-1 3/4)	1080-2 611 (700-2)	1080-2 1/4 611 (700-2 1/4)
CIRCLING	1140-1 671 (700-1)	1140-1 671 (700-1)	1140-2 671 (700-2)	1140-2 1/4 671 (700-2 1/4)	1200-2 1/2 731 (800-2 1/2)

HIRL Rwy 7-25
 MIRL Rwy 1-19

SC-1, 19 NOV 2009 to 17 DEC 2009

SC-1, 19 NOV 2009 to 17 DEC 2009