

VOR or TACAN RWY 25

FORT SMITH RGNL (FSM)

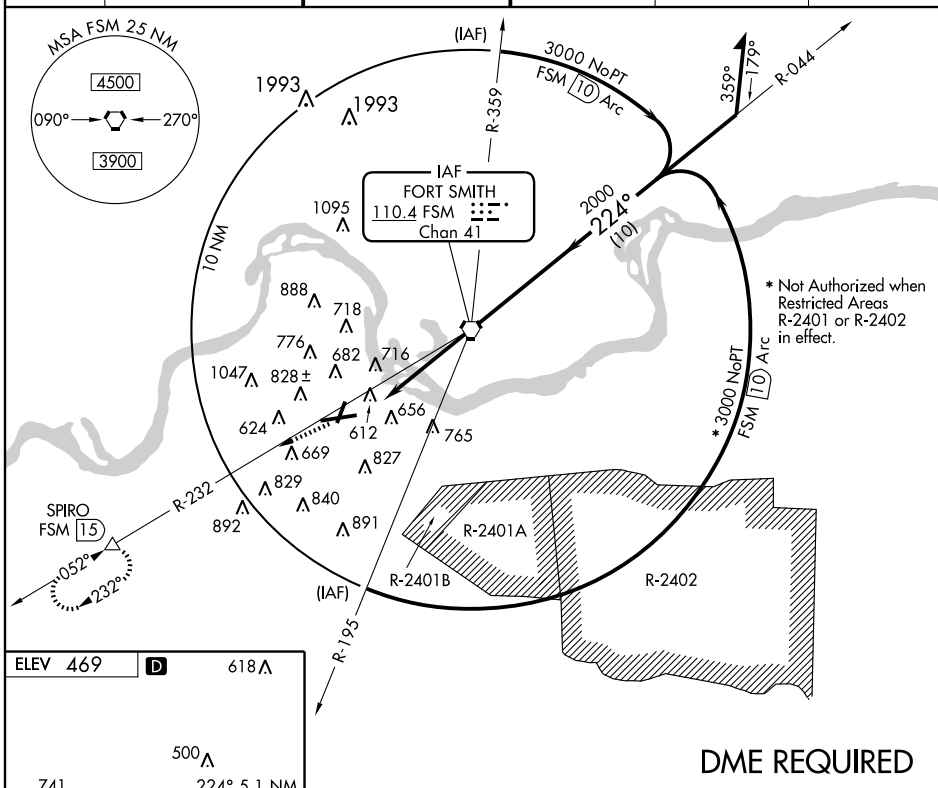
VORTAC FSM 110.4 Chan 41	APP CRS 224°	Rwy Idg TDZE 445 Apt Elev 469	8000
---------------------------------------	------------------------	---	-------------

⚠ Inoperative table does not apply. Circling NA NW of Rwy 7 and 19 for Cat E. Circling to Rwy 1 NA at night. Circling Cat E NA when R-2401B active.



MISSED APPROACH: Climb to 4000 via FSM R-232 to SPIRO Int/15 DME and hold.

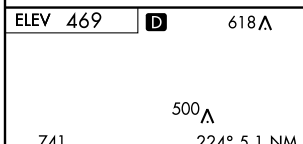
ATIS 126.3	RAZORBACK APP CON* 120.9 343.75	FORT SMITH TOWER* 118.3 (CTAF) 0 323.175	GND CON 121.9 275.8	CLNC DEL 133.85 278.3	UNICOM 122.95
----------------------	---	--	-------------------------------	---------------------------------	-------------------------



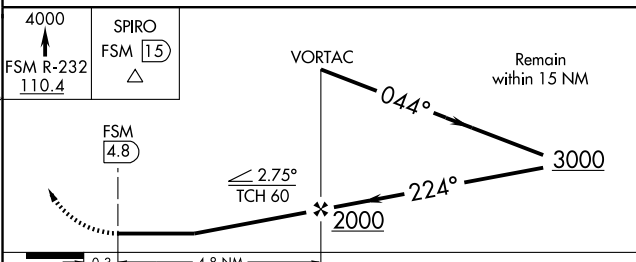
* Not Authorized when Restricted Areas R-2401 or R-2402 in effect.

SC-1, 19 NOV 2009 to 17 DEC 2009

SC-1, 19 NOV 2009 to 17 DEC 2009



DME REQUIRED



HIRL Rwy 7-25 MIRL Rwy 1-19	FAF to MAP 4.8 NM
Knots	60 90 120 150 180
Min:Sec	4:48 3:12 2:24 1:55 1:36

CATEGORY	A	B	C	D	E
S-25	980-1 535 (600-1)	980-1½ 535 (600-1½)	980-1¾ 535 (600-1¾)	980-2 535 (600-2)	980-2 535 (600-2)
CIRCLING	1140-1 671 (700-1)	1140-2 671 (700-2)	1140-2¼ 671 (700-2¼)	1200-2½ 731 (800-2½)	1200-2½ 731 (800-2½)