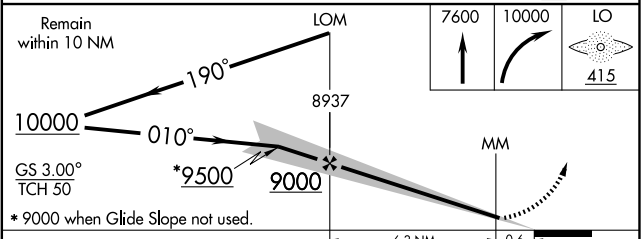
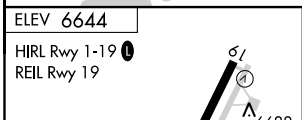
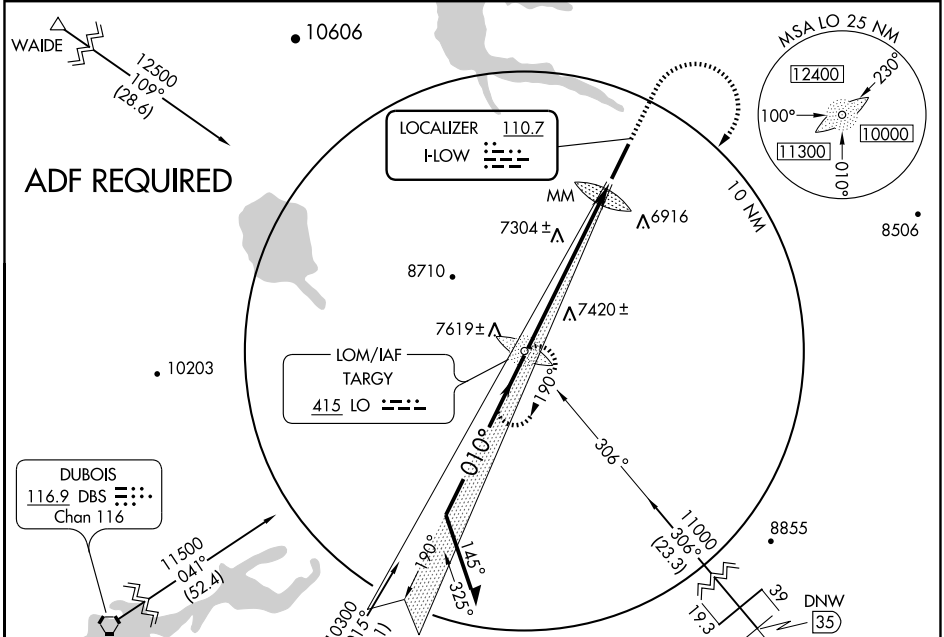


LOC I-LOW <b>110.7</b>	APP CRS <b>010°</b>	Rwy Idg TDZE Apt Elev	<b>8400</b> <b>6644</b> <b>6644</b>
---------------------------	------------------------	-----------------------------	---

**ILS or LOC RWY 1**  
WEST YELLOWSTONE/YELLOWSTONE (WYS)

<p><b>▽</b> If local altimeter setting not received, procedure not authorized.</p> <p><b>▲ NA</b></p>	<p>MALSR</p>	<p>MISSED APPROACH: Climb to 7600, then climbing right turn to 10000 direct LO LOM and hold.</p>
---	--------------	--

<p>SALT LAKE CENTER <b>132.4 338.3</b></p>	<p>UNICOM <b>123.0 (CTAF) 0</b></p>
--	---



CATEGORY	A	B	C	D
S-ILS 1	6844-½ 200 (200-½)			
S-LOC 1	7720-¾ 1076 (1100-¾)	7720-1 1076 (1100-1)	7720-2½	1076 (1100-2½)
CIRCLING	7720-1¼ 1076 (1100-1¼)	7720-1½ 1076 (1100-1½)	7720-3	1076 (1100-3)

FAF to MAP 6.9 NM					
Knots	60	90	120	150	180
Min:Sec	6:54	4:36	3:27	2:46	2:18

NW-1, 19 NOV 2009 to 17 DEC 2009

NW-1, 19 NOV 2009 to 17 DEC 2009