

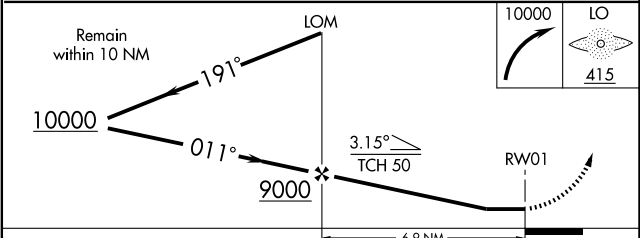
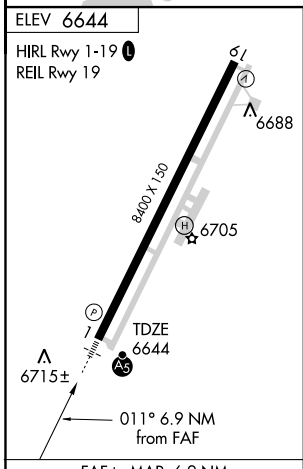
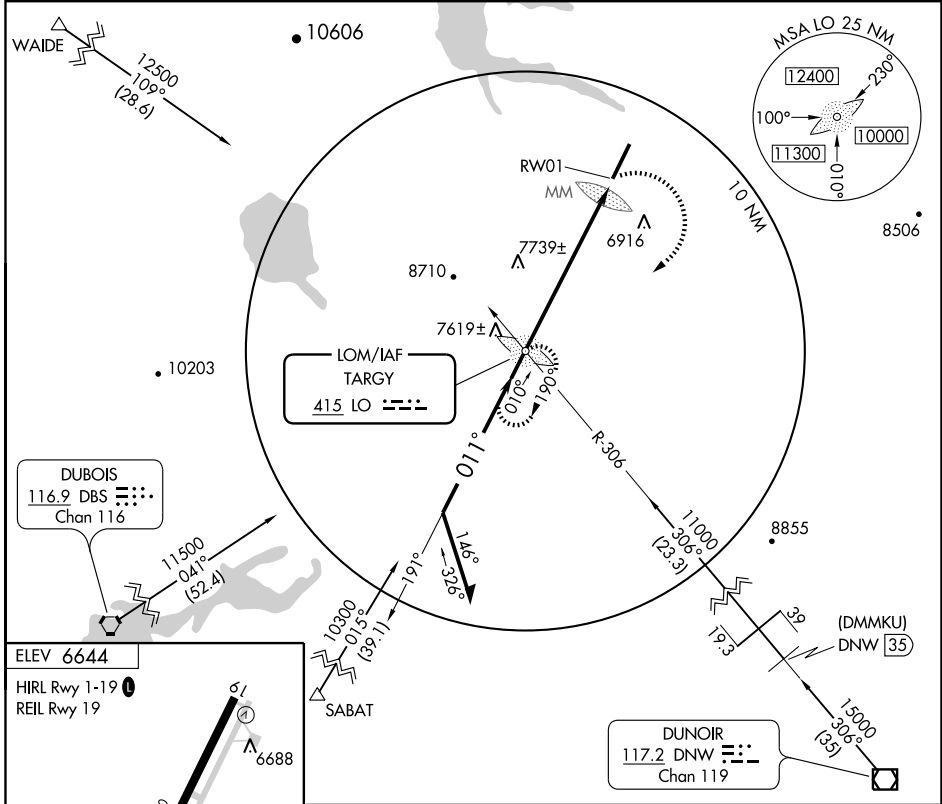
# NDB or GPS RWY 1

WEST YELLOWSTONE/YELLOWSTONE (WYS)

LOM LO <b>415</b>	APP CRS <b>011°</b>	Rwy Idg TDZE Apt Elev	<b>8400</b> <b>6644</b> <b>6644</b>
----------------------	------------------------	-----------------------------	-------------------------------------------

**NA** If local altimeter setting not received, procedure not authorized. Categories A and B, S-1 visibility increased ½ mile for inoperative MALS. **MALS** MISSED APPROACH: Climbing right turn to 10000 direct LO LOM and hold.

**SALT LAKE CENTER 132.4 338.3** **UNICOM 123.0 (CTAF)**



CATEGORY	A	B	C	D
S-1	8000-¾ 1356 (1400-¾)	8000-1 1356 (1400-1)	8000-2½ 1356 (1400-2½)	8000-2¾ 1356 (1400-2¾)
CIRCLING	8000-1¼ 1356 (1400-1¼)	8000-1½ 1356 (1400-1½)	8000-3	1356 (1400-3)

FAF to MAP 6.9 NM

Knots	60	90	120	150	180
Min:Sec	6:54	4:36	3:27	2:46	2:18

NW-1, 19 NOV 2009 to 17 DEC 2009

NW-1, 19 NOV 2009 to 17 DEC 2009