

LOC BC RWY 23

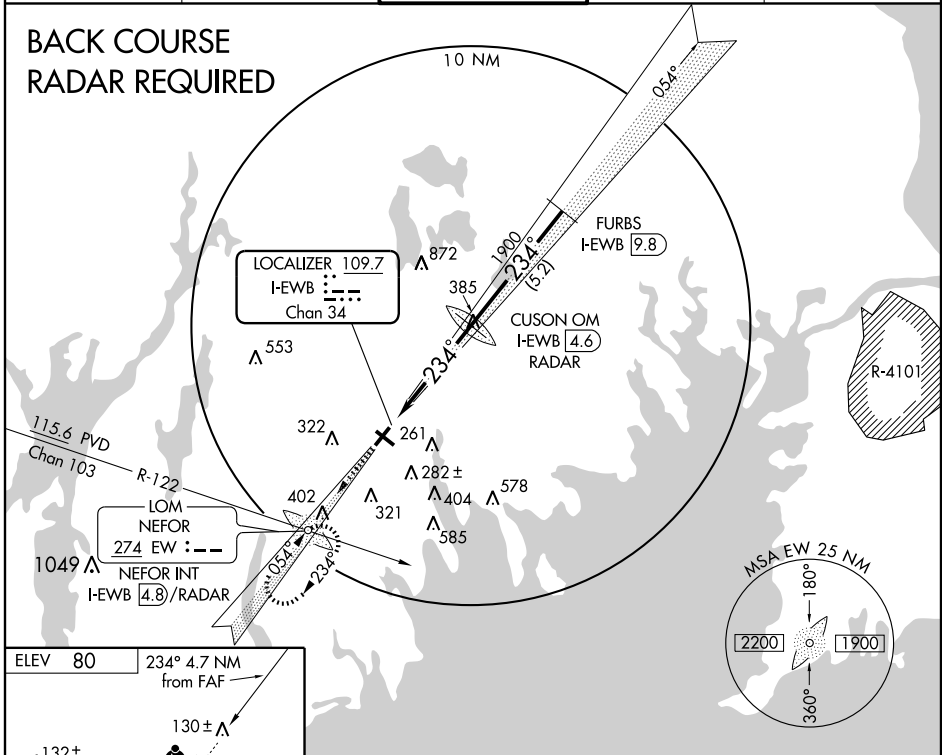
NEW BEDFORD RGNL (EWB)

LOC/DME I-EWB 109.7 Chan 34	APP CRS 234°	Rwy Idg TDZE 78 Apt Elev 80
--	------------------------	---

<p>For inoperative MALSRS, increase S-23 visibility ¼ mile all Cats.</p>	<p>MALSRS</p>	<p>MISSED APPROACH: Climb to 1700 via I-EWB SW course to NEFOR LOM/Int/I-EWB 4.8 DME/RADAR and hold.</p>
--	---------------	--

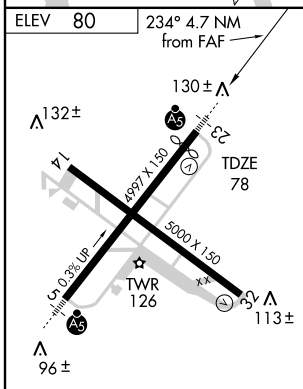
ATIS 126.85	PROVIDENCE APP CON* 128.7 269.525	NEW BEDFORD TOWER* 118.1 (CTAF) 239.0	GND CON 121.9	UNICOM 122.95
-----------------------	---	---	-------------------------	-------------------------

BACK COURSE RADAR REQUIRED



NE-1, 19 NOV 2009 to 17 DEC 2009

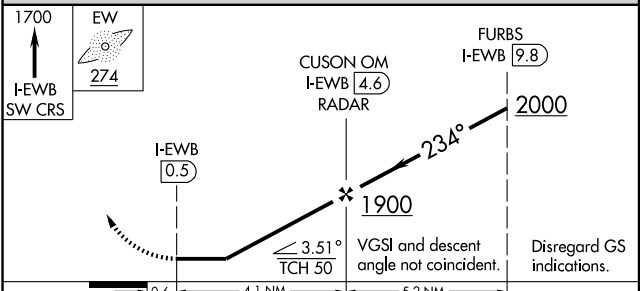
NE-1, 19 NOV 2009 to 17 DEC 2009



MIRL Rwy 14-32
HIRL Rwy 5-23
REIL Rwy 32

FAF to MAP 4.1 NM

Knots	60	90	120	150	180
Min:Sec	4:06	2:44	2:03	1:38	1:22



CATEGORY	A	B	C	D
S-23	460-¾ 382 (400-¾)			460-1 382 (400-1)
CIRCLING	620-1	540 (600-1)	640-1½ 560 (600-1½)	640-2 560 (600-2)