


# RNAV (GPS) RWY 23

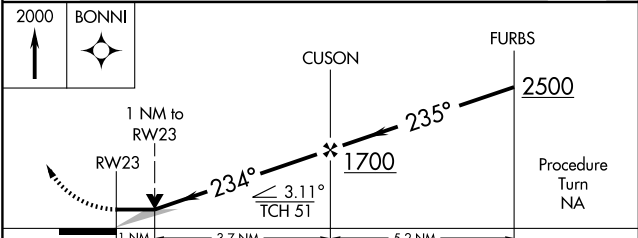
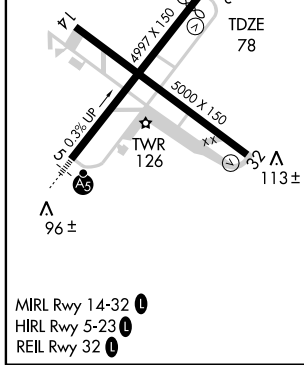
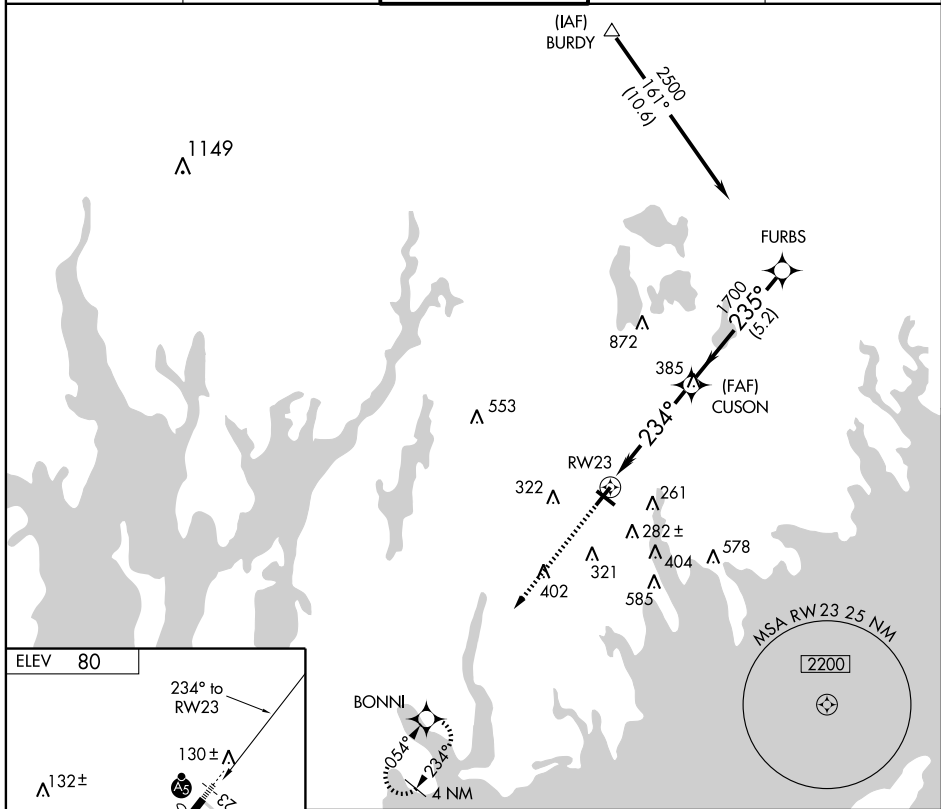
NEW BEDFORD RGNL (EWB)

APP CRS <b>234°</b>	Rwy Idg <b>4584</b>
	TDZE <b>78</b>
	Apt Elev <b>80</b>

**▼** For inoperative MALSR, increase LNAV Cat A/B/C visibility to 1, Cat D to 1¼.  
**▲ NA** GPS or RNP-0.3 required. DME/DME RNP-0.3 NA.

**MALSR**   
**MISSED APPROACH:** Climb to 2000 direct to BONNI WP and hold.

ATIS <b>126.85</b>	PROVIDENCE APP CON* <b>128.7 269.525</b>	NEW BEDFORD TOWER* <b>118.1 (CTAF) 239.0</b>	GND CON <b>121.9</b>	UNICOM <b>122.95</b>
-----------------------	---	---	-------------------------	-------------------------



CATEGORY	A	B	C	D
LNAV MDA	460-¾ 382 (400-¾)			460-1 382 (400-1)
CIRCLING	620-1 540 (600-1)	640-1½ 560 (600-1½)		640-2 560 (600-2)

NE-1, 19 NOV 2009 to 17 DEC 2009

NE-1, 19 NOV 2009 to 17 DEC 2009