

RNAV (GPS) RWY 3

PARKERSBURG/MID-OHIO VALLEY RGNL (PKB)

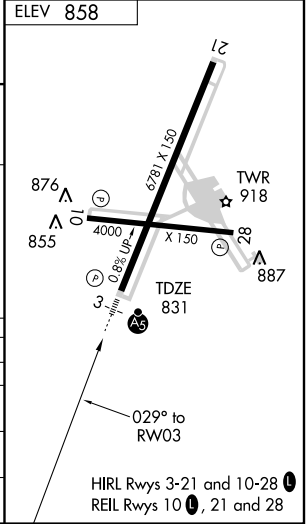
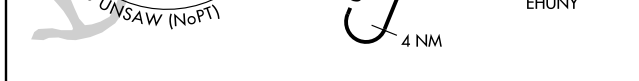
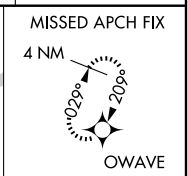
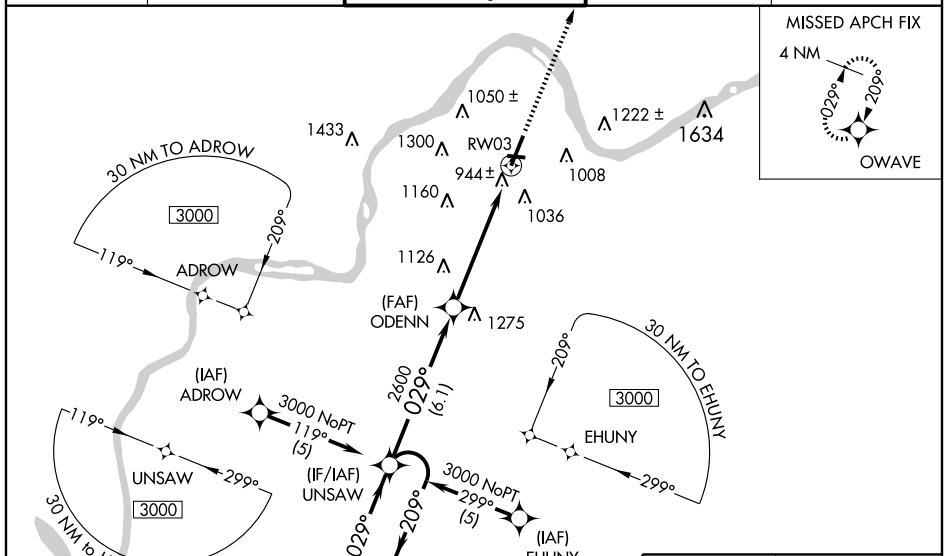
| | | |
|--|------------------------|---|
| WAAS CH 77906 W03A | APP CRS 029° | Rwy Idg TDZE 831 Apt Elev 858 |
|--|------------------------|---|

⚠ For uncompensated Baro-VNAV systems, LNAV/VNAV NA below -16°C (4°F) or above 47°C (116°F).
⚠ DME/DME RNP-0.3 NA. Visibility reduction by helicopters NA. Baro-VNAV and VDP NA when using Jackson County altimeter setting. When local altimeter setting not received, use Jackson County altimeter setting and increase all DAs/MDAs 100 feet. Increase all visibilities ¾ mile. Inoperative table does not apply when using Jackson County altimeter setting. For inoperative MALSR increase LPV visibility all Cats to 1½ and LNAV Cats A/B to RVR 5000.



MISSED APPROACH: Climb to 3100 direct OWAVE and hold.

| | | | | |
|-----------------------|--|---|-------------------------|-------------------------|
| ATIS 124.35 | INDIANAPOLIS CENTER 125.55 398.9 | PARKERSBURG TOWER★ 123.7 (CTAF) 0 257.8 | GND CON 121.7 | UNICOM 122.95 |
|-----------------------|--|---|-------------------------|-------------------------|



| | | | | | | | |
|----------|--------|--------|--------|--------|------|--------|-------|
| 3000 | ← 209° | UNSAW | → 029° | ODENN | 2600 | → 029° | RWY 3 |
| GS 3.00° | | TCH 42 | | 6.1 NM | | 3.8 NM | |
| | | | | 1.6 NM | | | |

| CATEGORY | A | B | C | D |
|--------------|---------------------|-------------|-------------------------|-------------------------|
| LPV DA | 1217/50 386 (400-1) | | | |
| LNAV/VNAV DA | 1478-2 647 (700-2) | | | |
| LNAV MDA | 1380/40 | 549 (600-¾) | 1380/50 549 (600-1) | 1380/60 549 (600-1¼) |
| CIRCLING | 1440-1 | 582 (600-1) | 1440-1½ 582 (600-1½) | 1460-2 602 (700-2) |

NE-4, 11 MAR 2010 to 08 APR 2010

NE-4, 11 MAR 2010 to 08 APR 2010