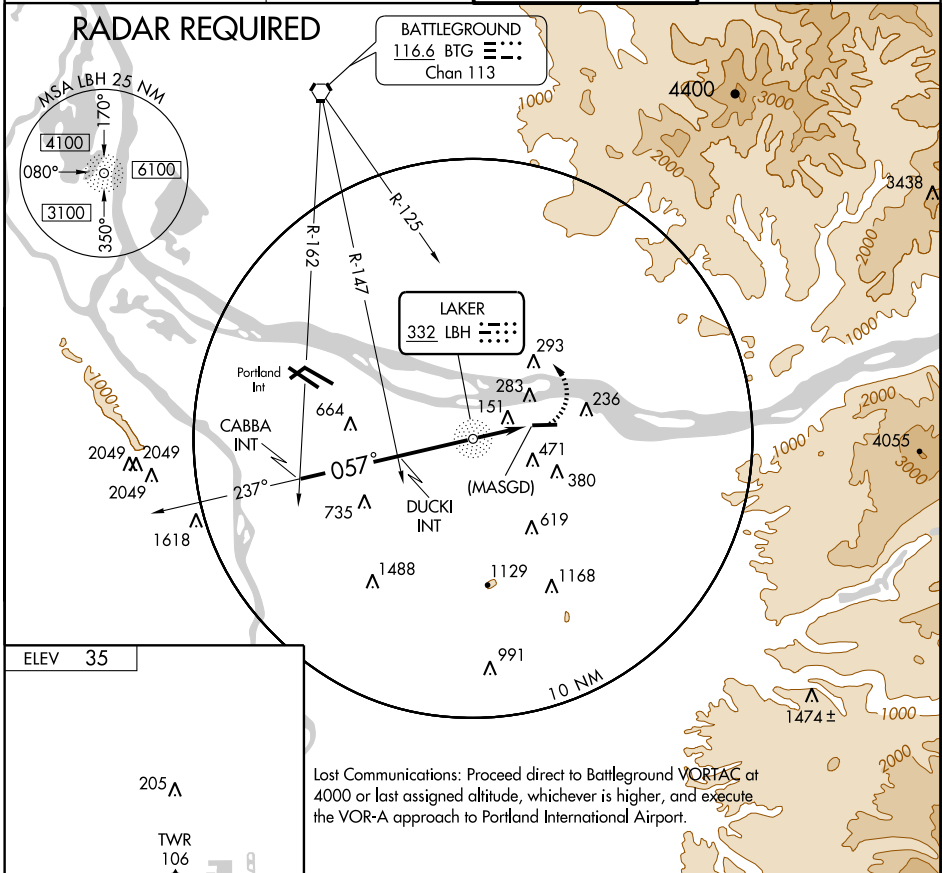


NDB or GPS-A
PORTLAND-TROUTDALE (T'D)

NDB LBH 332	APP CRS 057°	Rwy ldg TDZE Apt Elev	N/A N/A 35
-----------------------	------------------------	--------------------------	---------------------------------------

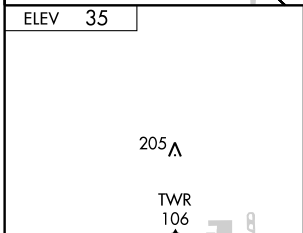
⚠ If local altimeter setting not received procedure not authorized. **MISSED APPROACH:** Climbing left turn to 4000 via BTG R-125 to BTG VORTAC.

ATIS 135.625	PORTLAND APP CON 124.35 299.2	TROUTDALE TOWER * 120.9 (CTAF) 0 254.3	GND CON 121.8	UNICOM 122.95
------------------------	---	---	-------------------------	-------------------------

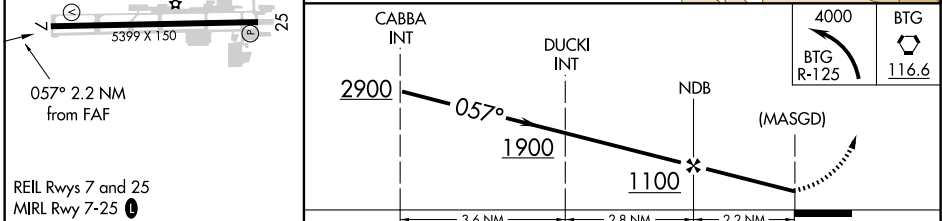


NW-1, 11 MAR 2010 to 08 APR 2010

NW-1, 11 MAR 2010 to 08 APR 2010



Lost Communications: Proceed direct to Battleground VORTAC at 4000 or last assigned altitude, whichever is higher, and execute the VOR-A approach to Portland International Airport.



FAF to MAP 2.2 NM					
Knots	60	90	120	150	180
Min:Sec	2:12	1:28	1:06	0:53	0:44

CATEGORY	A	B	C	D
CIRCLING	1040-1¼ 1005 (1100-1¼)	1060-1½ 1025 (1100-1½)	1060-3 1025 (1100-3)	1300-3 1265 (1300-3)