

WHITE PLAINS, NEW YORK

AL-651 (FAA)

LOC/DME I-HPN <b>109.7</b> Chan <b>34</b>	APP CRS <b>162°</b>	Rwy Idg <b>6548</b> TDZE <b>439</b> Apt Elev <b>439</b>
---	------------------------	---

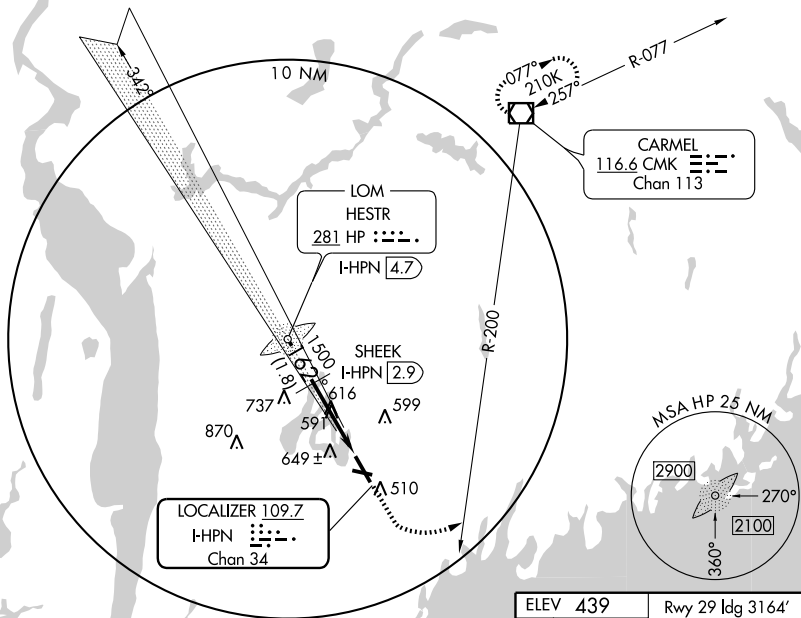
# COPTER ILS or LOC/DME RWY 16

WHITE PLAINS/WESTCHESTER COUNTY (HPN)



MISSED APPROACH: Climb to 1000, then climbing left turn to 2300 via heading 090° and CMK R-200 to CMK VOR/DME and hold.

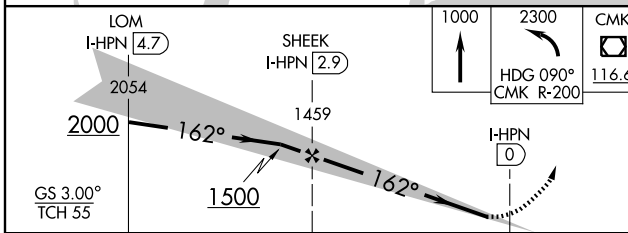
ATIS <b>133.8</b>	NEW YORK APP CON <b>126.4 120.8 257.65</b>	WESTCHESTER TOWER ★ <b>118.575</b> (CTAF) <b>284.65</b>	GND CON <b>121.825</b>	CLNC DEL <b>127.25</b>	UNICOM <b>122.95</b>
----------------------	---	--	---------------------------	---------------------------	-------------------------



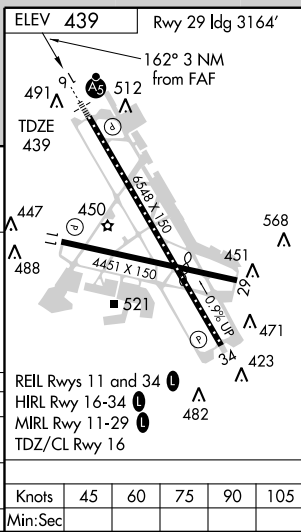
NE-2, 11 MAR 2010 to 08 APR 2010

NE-2, 11 MAR 2010 to 08 APR 2010

## RADAR REQUIRED



CATEGORY	A	B	C	D
S-ILS 162°	639/12 200 (200-¼)		NA	
S-LOC 162°	940/12 501 (600-¼)		NA	
CIRCLING	NA			



WHITE PLAINS, NEW YORK  
Orig-D 07298

41°04'N - 73°43'W

# COPTER ILS or LOC/DME RWY 16

Knots	45	60	75	90	105
Min:Sec					