

COVINGTON, KENTUCKY

AL-655 (FAA)

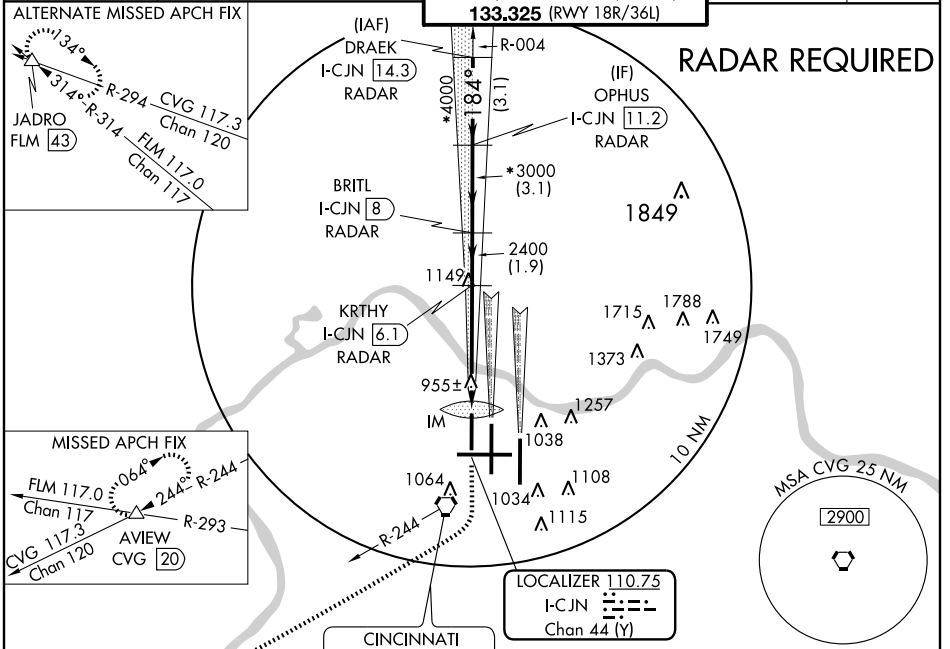
LOC/DME I-CJN	APP CRS	Rwy Idg	8000
110.75	184°	TDZE	868
Chan 44 (Y)		Apt Elev	896

COVINGTON/
CINCINNATI/NORTHERN KENTUCKY INTL (CVG) **ILS RWY 18R (CAT II)**

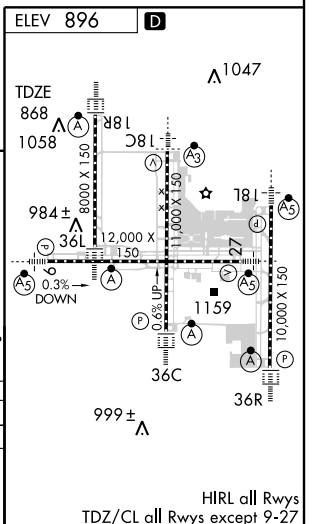
⚠ Simultaneous approach authorized with Rwy 18C and 18L.
⚠ DME or RADAR required.

ALSF-2 MISSED APPROACH: Climb to 3000 then climbing right turn to 3000 via CVG R-244 to AVIEW INT /CVG 20 DME and hold.

ATIS	CINCINNATI APP CON	CINCINNATI TOWER	GND CON	CLNC DEL
ARR 134.375 DEP 135.3	119.7 254.25 (090°- 269°) 123.875 363.15 (270°- 089°)	118.975 360.85 (RWY 18L/36R) 118.3 (RWYS 18C/36C, 09/27) 133.325 (RWY 18R/36L)	121.7 (WEST) 121.3 (EAST)	127.175



1300	3000	CVG R-244 117.3	AVIEW	
868 MSL	2400	3000	4000	5000
1.41 NM	84°	4.4 NM	1.9 NM	3.1 NM
CATEGORY	A	B	C	D
S-ILS-28R	968/12 100 RA 113			



SE-1, 19 NOV 2009 to 17 DEC 2009

SE-1, 19 NOV 2009 to 17 DEC 2009

CATEGORY II ILS - SPECIAL AIRCREW & AIRCRAFT CERTIFICATION REQUIRED

COVINGTON, KENTUCKY
 Amdt 1 09015

COVINGTON/ CINCINNATI/NORTHERN KENTUCKY INTL (CVG)
 39°03'N-84°40'W

ILS RWY 18R (CAT II)