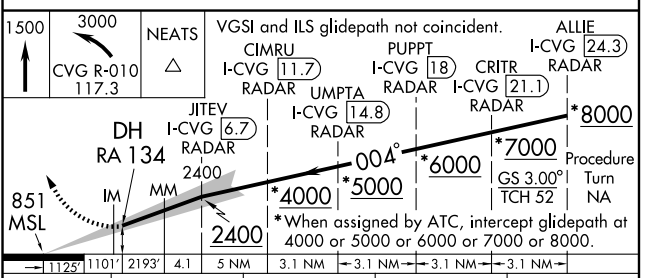
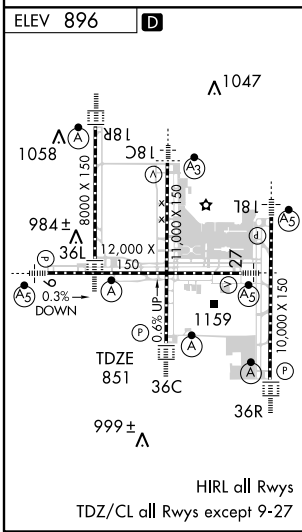
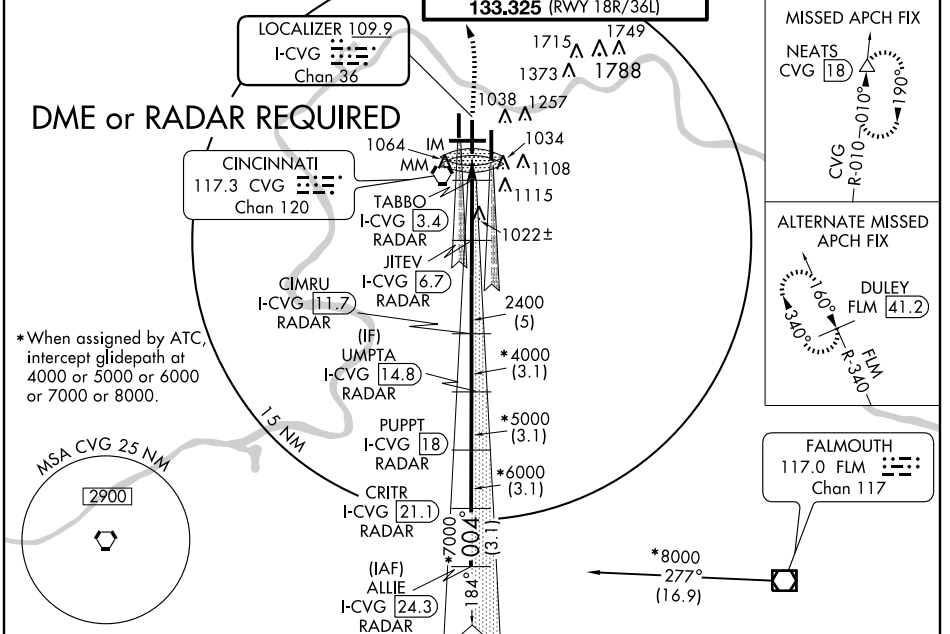


LOC/DME I-CVG <b>109.9</b> Chan <b>36</b>	APP CRS <b>004°</b>	Rwy Idg <b>11000</b> TDZE <b>851</b> Apt Elev <b>896</b>
---	------------------------	--

COVINGTON/  
CINCINNATI/NORTHERN KENTUCKY INTL (CVG)  
**ILS RWY 36C (CAT II)**

⚠ Simultaneous approach authorized with Rwy 36L and 36R.
⚠ DME REQUIRED.
ALSF-2
MISSED APPROACH: Climb to 1500 then climbing left turn to 3000 via CVG R-010 to NEATS/CVG 18 DME and hold.

ATIS ARR <b>134.375</b> DEP <b>135.3</b>	CINCINNATI APP CON <b>119.7 254.25</b> (090° - 269°) <b>123.875 363.15</b> (270° - 089°)	CINCINNATI TOWER <b>118.975 360.85</b> (RWY 18L/36R) <b>118.3</b> (RWYS 18C/36C, 09/27) <b>133.325</b> (RWY 18R/36L)	GND CON <b>121.7</b> (WEST) <b>121.3</b> (EAST)	CLNC DEL <b>127.175</b>
---	--	---	---	----------------------------



CATEGORY	A	B	C	D
S-ILS-36C		951/12	100 RA 134	

**CATEGORY II ILS - SPECIAL AIRCREW & AIRCRAFT CERTIFICATION REQUIRED**

SE-1, 19 NOV 2009 to 17 DEC 2009

SE-1, 19 NOV 2009 to 17 DEC 2009