

LOC/DME I-CVG 109.9 Chan 36	APP CRS 004°	Rwy Idg TDZE Apt Elev	11000 851 896
---	------------------------	-----------------------------	--

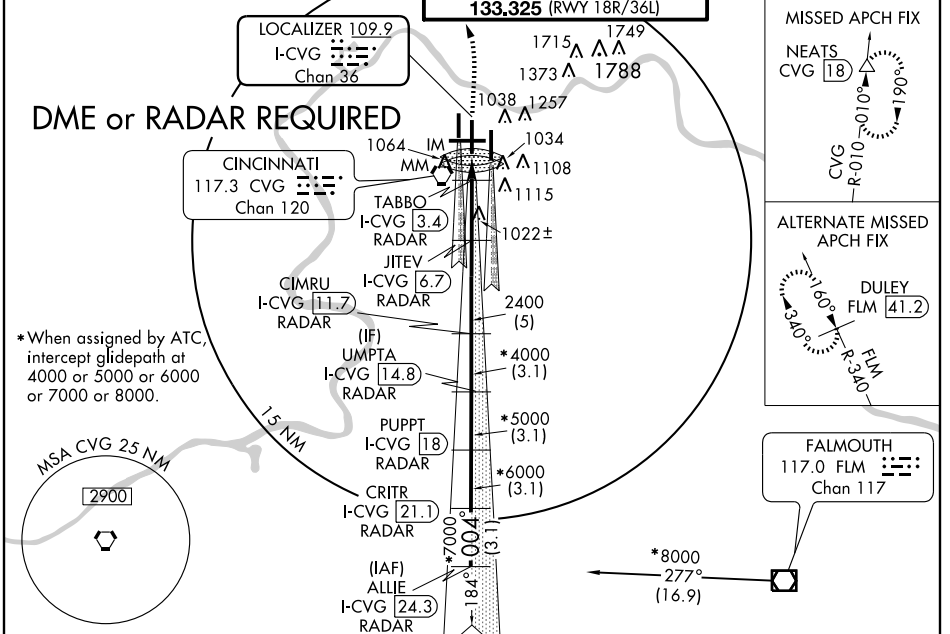
COVINGTON/**ILS RWY 36C (CAT III)**
CINCINNATI/NORTHERN KENTUCKY INTL (CVG)

Simultaneous approach authorized with Rwy 36R and 36L.
DME or RADAR REQUIRED.

ALSF-2

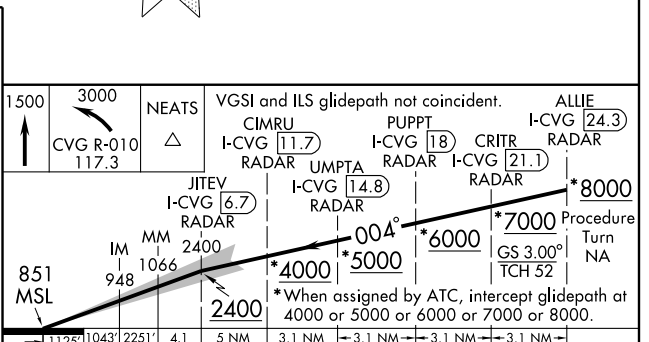
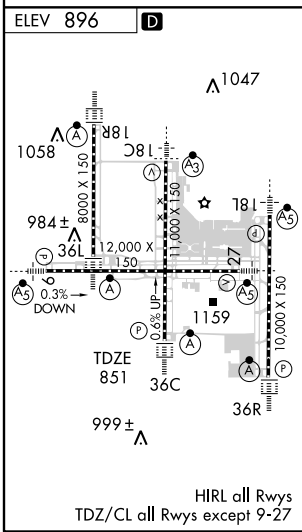
MISSED APPROACH: Climb to 1500 then climbing left turn to 3000 via CVG R-010 to NEATS Int/18 DME and hold.

ATIS ARR 134.375 DEP 135.3	CINCINNATI APP CON 119.7 254.25 (090° - 269°) 123.875 363.15 (270° - 089°)	CINCINNATI TOWER 118.975 360.85 (RWY 18L/36R) 118.3 (RWYS 18C/36C, 09/27) 133.325 (RWY 18R/36L)	GND CON 121.7 (WEST) 121.3 (EAST)	CLNC DEL 127.175
---	--	---	---	----------------------------



SE-1, 19 NOV 2009 to 17 DEC 2009

SE-1, 19 NOV 2009 to 17 DEC 2009



CATEGORY	A	B	C	D
S-ILS 36C		CAT IIIa	RVR 07	
S-ILS 36C		CAT IIIb	RVR 06	
S-ILS 36C		CAT IIIc	NA	

CATEGORY III ILS - SPECIAL AIRCREW & AIRCRAFT CERTIFICATION REQUIRED

ILS RWY 36C (CAT III)