

LOC/DME I-VAC <b>110.75</b> Chan <b>44 (Y)</b>	APP CRS <b>004°</b>	Rwy Idg <b>8000</b>
		TDZE <b>873</b>
		Apt Elev <b>896</b>

COVINGTON/  
CINCINNATI/NORTHERN KENTUCKY INTL (CVG)

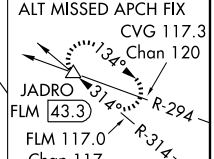
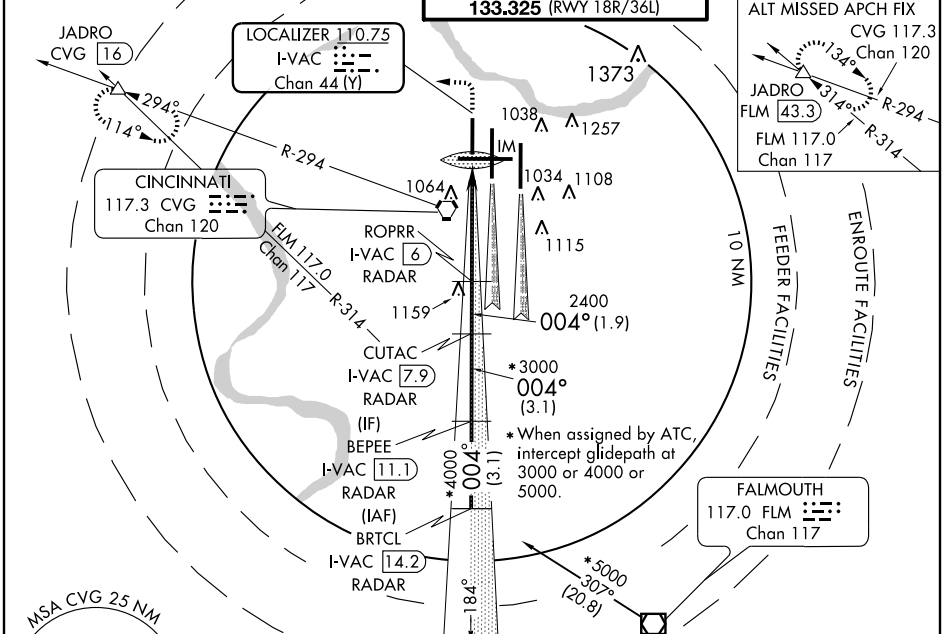
**ILS RWY 36L (CAT II)**

**Simultaneous approach authorized with Rws 36C and 36R. DME Required.**

ALSF-2

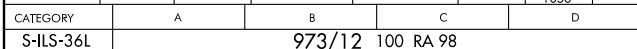
**MISSED APPROACH:** Climb to 1300 then climbing left turn to 3000 via heading 270° and CVG R-294 to JADRO/CVG 16 DME and hold.

ATIS ARR <b>134.375</b> DEP <b>135.3</b>	CINCINNATI APP CON <b>119.7 254.25</b> (090°- 269°) <b>123.875 363.15</b> (270°- 089°)	CINCINNATI TOWER <b>118.975 360.85</b> (RWY 18L/36R) <b>118.3</b> (RWYS 18C/36C, 09/27) <b>133.325</b> (RWY 18R/36L)	GND CON <b>121.7</b> (WEST) <b>121.3</b> (EAST)	CLNC DEL <b>127.175</b>
---	--	---	---	----------------------------

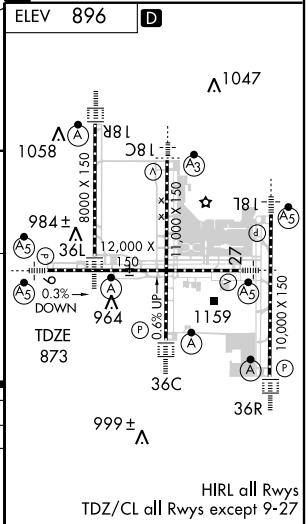


**DME or RADAR REQUIRED**

BRTCL I-VAC <b>14.2</b> RADAR	* When assigned by ATC, intercept glidepath at 3000 or 4000 or 5000.	1300	3000	JADRO
BEPEE I-VAC <b>11.1</b> RADAR		↑	HDG 270° CVG R-294 117.3	△
CUTAC I-VAC <b>7.9</b> RADAR				
ROPRR I-VAC <b>6</b> RADAR				



CATEGORY	A	B	C	D
S-ILS-36L		973/12	100	RA 98



**CATEGORY II ILS - SPECIAL AIRCREW & AIRCRAFT CERTIFICATION REQUIRED**

HIRL all Rws  
TDZ/CL all Rws except 9-27

SE-1, 19 NOV 2009 to 17 DEC 2009

SE-1, 19 NOV 2009 to 17 DEC 2009