

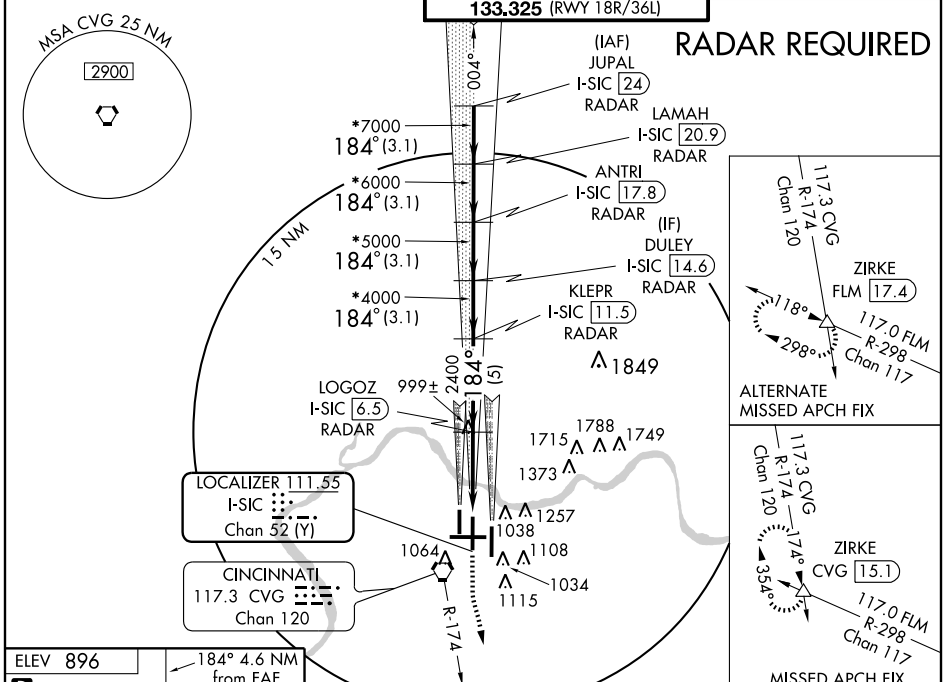
LOC/DME I-SIC 111.55 Chan 52 (Y)	APP CRS 184°	Rwy Idg TDZE 875 Apt Elev 896	11000
--	------------------------	---	--------------

COVINGTON / **ILS or LOC RWY 18C**
CINCINNATI/NORTHERN KENTUCKY INTL (CVG)

Simultaneous approach authorized with Rwy 18L and 18R.
DME or RADAR REQUIRED. LOC procedure NA during simultaneous operations.

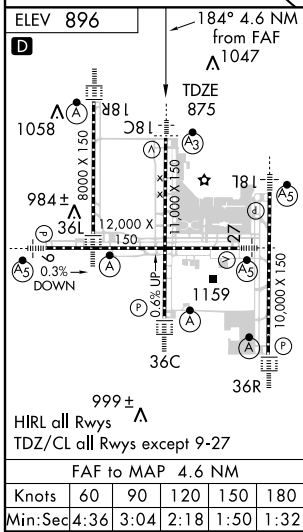
SSALR
MISSED APPROACH: Climb to 1500 then climbing left turn to 3000 via CVG R-174 to ZIRKE Int/CVG 15.1 DME and hold.

ATIS ARR 134.375 DEP 135.3	CINCINNATI APP CON 119.7 254.25 (090°- 269°) 123.875 363.15 (270°- 089°)	CINCINNATI TOWER 118.975 360.85 (RWY 18L/36R) 118.3 (RWYS 18C/36C, 09/27) 133.325 (RWY 18R/36L)	GND CON 121.7 (WEST) 121.3 (EAST)	CLNC DEL 127.175
--	--	---	---	----------------------------



SE-1, 19 NOV 2009 to 17 DEC 2009

SE-1, 19 NOV 2009 to 17 DEC 2009



VGSI and ILS glidepath not coincident.

1500 3000 ZIRKE
CVG R-174 117.3

*8000 184°
*7000
*6000
*5000
*4000

GS 3.00° TCH 55

*When assigned by ATC, intercept glidepath at 4000 or 5000 or 6000 or 7000 or 8000.

	3.1 NM	3.1 NM	3.1 NM	5 NM	3.5 NM	1 NM
CATEGORY	A	B	C	D		
S-ILS 18C	1075/18 200 (200-1/2)					
S-LOC 18C	1260/24 385 (400-1/2)			1260/40 385 (400-3/4)		
CIRCLING	1460-1 564 (600-1)		1460-1 1/2 564 (600-1 1/2)		1560-2 664 (700-2)	