

| | | |
|---|------------------------|--|
| LOC/DME I-CJN 110.75 Chan 44 (Y) | APP CRS 184° | Rwy ldg 8000 TDZE 868 Apt Elev 896 |
|---|------------------------|--|

COVINGTON/
CINCINNATI/NORTHERN KENTUCKY INTL (CVG) **ILS or LOC RWY 18R**

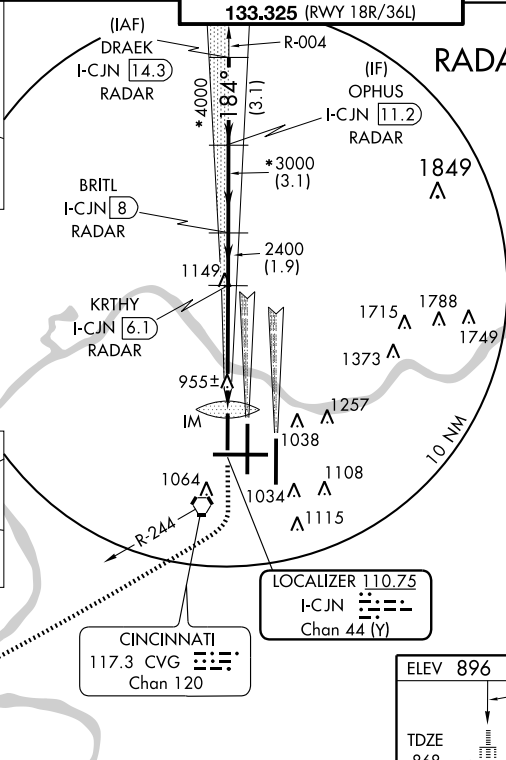
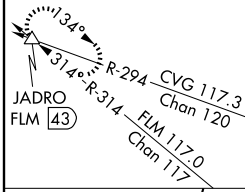
⚠ Simultaneous approach authorized with Rwy 18C and 18L.
⚠ LOC procedure NA during simultaneous operations.
⚠ DME or RADAR required.

ALS F-2
A

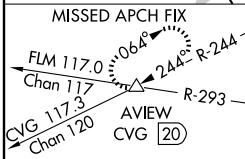
MISSED APPROACH: Climb to 1300 then climbing right turn to 3000 via CVG R-244 to AVIEW INT/ CVG 20 DME and hold.

| | | | | |
|---|--|---|---|----------------------------|
| ATIS ARR 134.375 DEP 135.3 | CINCINNATI APP CON 119.7 254.25 (090°- 269°) 123.875 363.15 (270°- 089°) | CINCINNATI TOWER 118.975 360.85 (RWY 18L/36R) 118.3 (RWYS 18C/36C, 09/27) 133.325 (RWY 18R/36L) | GND CON 121.7 (WEST) 121.3 (EAST) | CLNC DEL 127.175 |
|---|--|---|---|----------------------------|

ALTERNATE MISSED APCH FIX

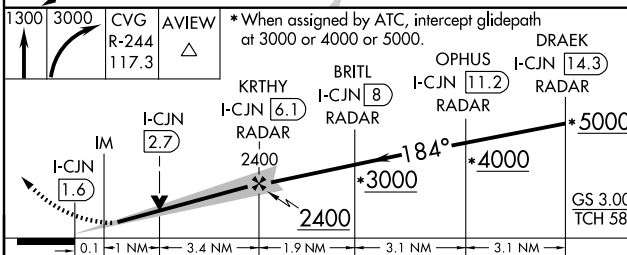


RADAR REQUIRED



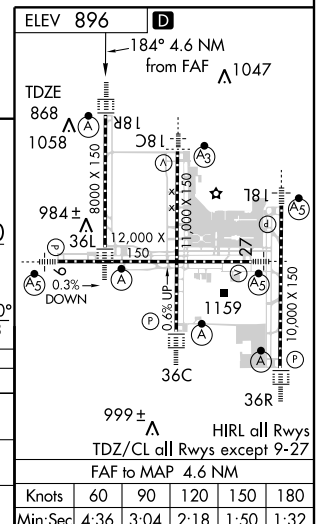
LOCALIZER **110.75**
I-CJN
Chan 44 (Y)

CINCINNATI
117.3 CVG
Chan 120



*When assigned by ATC, intercept glidepath at 3000 or 4000 or 5000.

| CATEGORY | A | B | C | D |
|-----------|---------|-------------|-------------------------|------------------------|
| S-ILS 18R | 1068/18 | | 200 (200-½) | |
| S-LOC 18R | 1300/24 | 432 (500-½) | 1300/40 432 (500-¾) | 1300/50 432 (500-1) |
| CIRCLING | 1460-1 | 564 (600-1) | 1460-1½ 564 (600-1½) | 1560-2 664 (700-2) |



ILS or LOC RWY 18R

SE-1, 19 NOV 2009 to 17 DEC 2009

SE-1, 19 NOV 2009 to 17 DEC 2009