

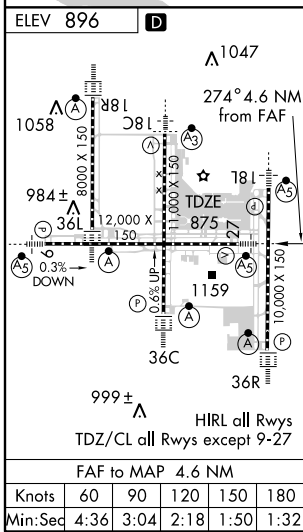
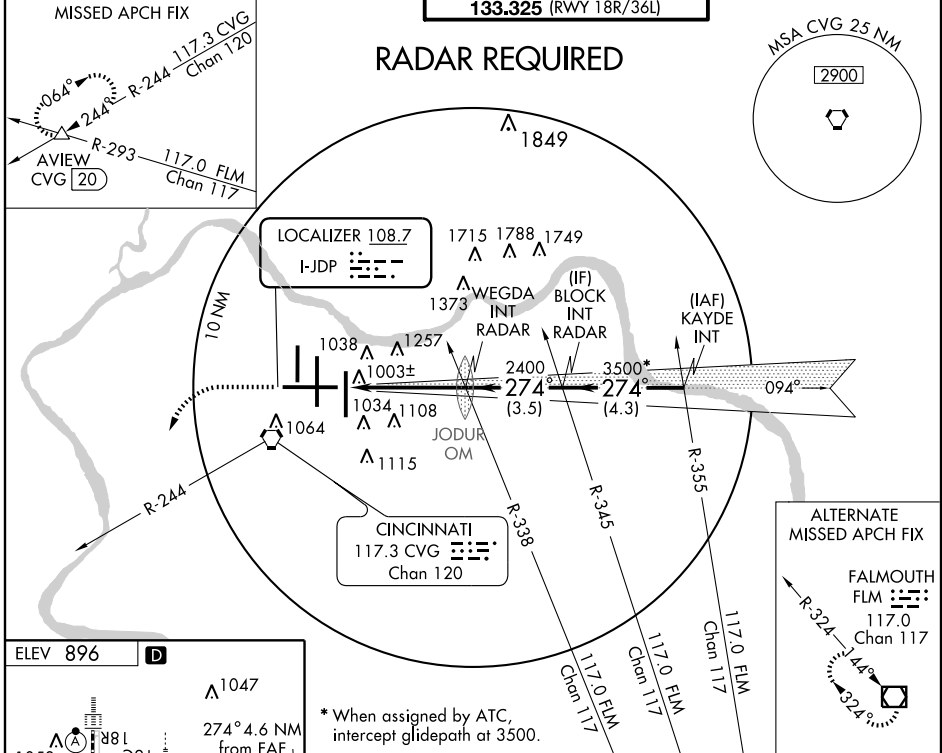
ILS or LOC RWY 27

COVINGTON/CINCINNATI/NORTHERN KENTUCKY INTL (CVG)

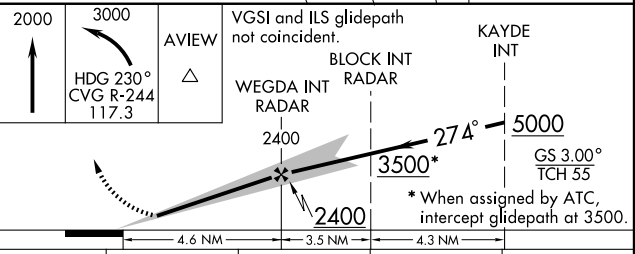
LOC I-JDP 108.7	APP CRS 274°	Rwy Idg TDZE Apt Elev	12000 875 896
---------------------------	------------------------	-----------------------------	--

	MALS R	MISSED APPROACH: Climb to 2000 then climbing left turn to 3000 via heading 230° and CVG R-244 to AVIEW Int/CVG 20 DME and hold.

ATIS	CINCINNATI APP CON	CINCINNATI TOWER	GND CON	CLNC DEL	
ARR 134.375	DEP 135.3	119.7 254.25 (090°-269°) 123.875 363.15 (270°-089°)	118.975 360.85 (RWY 18L/36R) 118.3 (RWYS 18C/36C, 09/27) 133.325 (RWY 18R/36L)	121.7 (WEST) 121.3 (EAST)	127.175



* When assigned by ATC, intercept glidepath at 3500.



	4.6 NM	3.5 NM	4.3 NM	
CATEGORY	A	B	C	D
S-ILS 27	1075/24		200 (200-½)	
S-LOC 27	1420/24	545 (600-½)	1420/50 545 (600-1)	1420/60 545 (600-1½)
CIRCLING	1460-1	564 (600-1)	1460-1½ 564 (600-1½)	1560-2 664 (700-2)

ILS or LOC RWY 27

SE-1, 19 NOV 2009 to 17 DEC 2009

SE-1, 19 NOV 2009 to 17 DEC 2009