

COVINGTON, KENTUCKY

AL-655 (FAA)

# RNAV (RNP) Z RWY 18C

COVINGTON / CINCINNATI/NORTHERN KENTUCKY INTL (CVG)

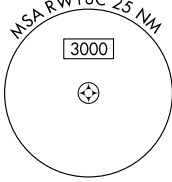
APP CRS	Rwy Idg	<b>11000</b>
<b>184°</b>	TDZE	<b>875</b>
	Apt Elev	<b>896</b>

**GPS Required.** For uncompensated Baro-VNAV systems, procedure NA below -16°C (4°F) or above 47°C (116°F).  
**NA** For inoperative SSALR, increase RNP 0.15 visibility to 1½, RNP 0.30 visibility to 1¾. Visibility reduction by helicopters NA.

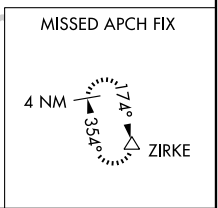
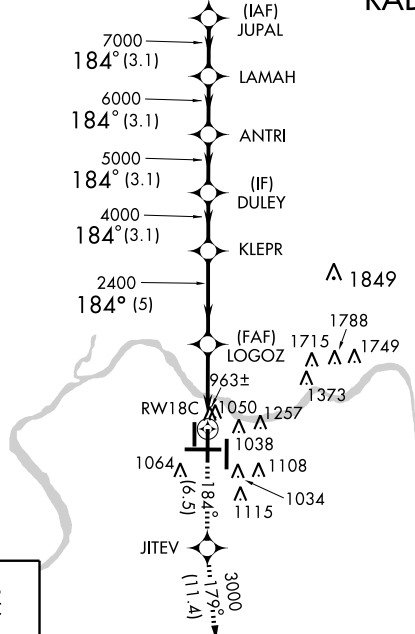
**SSALR**

**MISSED APPROACH:** Climb to 3000 via 184° track to JITEV and via 179° track to ZIRKE and hold.

ATIS		CINCINNATI APP CON		CINCINNATI TOWER		GND CON	CLNC DEL
ARR	DEP	<b>119.7</b>	<b>254.25</b> (090°- 269°)	<b>118.975</b>	<b>360.85</b> (RWY 18L/36R)	<b>121.7</b> (WEST)	<b>127.175</b>
<b>134.375</b>	<b>135.3</b>	<b>123.875</b>	<b>363.15</b> (270°- 089°)	<b>118.3</b> (RWYS 18C/36C, 09/27)	<b>133.325</b> (RWY 18R/36L)	<b>121.3</b> (EAST)	

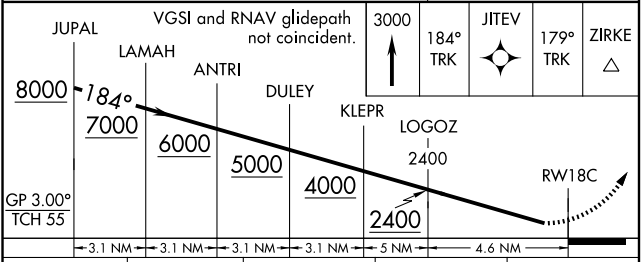
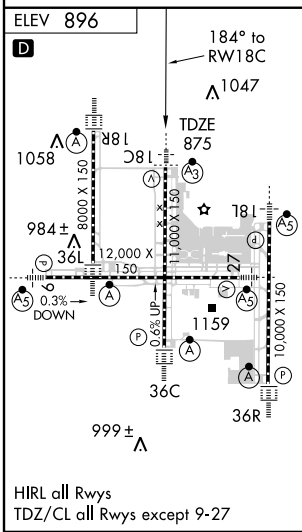


## RADAR REQUIRED



SE-1, 19 NOV 2009 to 17 DEC 2009

SE-1, 19 NOV 2009 to 17 DEC 2009



CATEGORY	A	B	C	D
RNP 0.15 DA	1321/50		446 (500-1)	
RNP 0.30 DA	1389/60		514 (600-1¼)	

## SPECIAL AIRCRAFT & AIRCREW AUTHORIZATION REQUIRED

COVINGTON, KENTUCKY  
Orig 08325

COVINGTON / CINCINNATI/NORTHERN KENTUCKY INTL (CVG)  
39°03'N - 84°40'W

# RNAV (RNP) Z RWY 18C