

COVINGTON, KENTUCKY

AL-655 (FAA)

RNAV (RNP) Z RWY 18L

COVINGTON/CINCINNATI/NORTHERN KENTUCKY INTL (CVG)

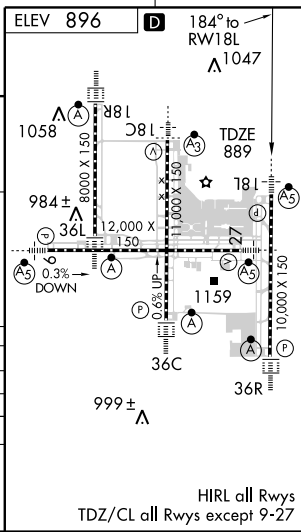
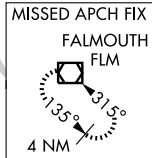
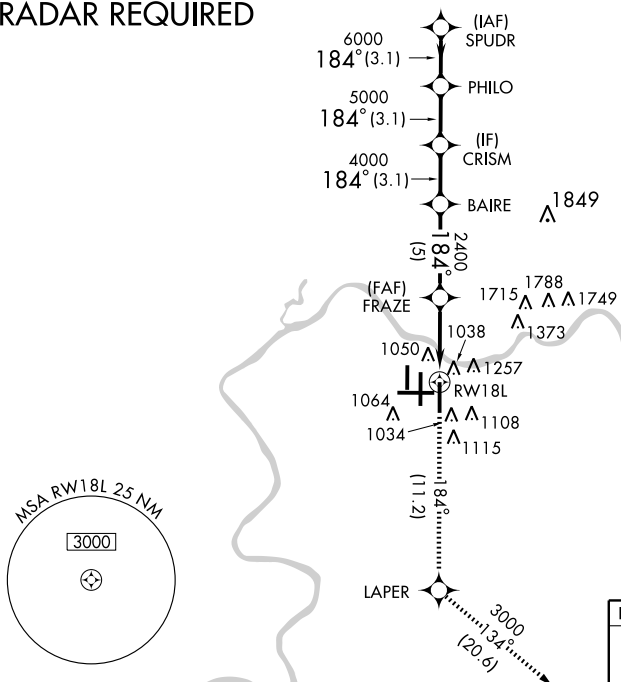
APP CRS	Rwy Idg	10000
184°	TDZE	889
	Apt Elev	896

NA For uncompensated Baro-VNAV systems, procedure NA below -16°C (4°F) or above 47°C (116°F). For inoperative MALSR, increase RNP 0.21 and RNP 0.25 visibility to RVR 6000, RNP 0.30 visibility to 2. Visibility reduction by helicopters NA. GPS Required.

MALSR MISSED APPROACH: Climb to 3000 via 184° track to LAPER and via 134° track to FLM VOR/DME and hold.

ATIS		CINCINNATI APP CON	CINCINNATI TOWER	GND CON	CLNC DEL
ARR	DEP	119.7 254.25 (090°- 269°)	118.975 360.85 (RWY 18L/36R)	121.7 (WEST)	127.175
134.375	135.3	123.875 363.15 (270°- 089°)	118.3 (RWYS 18C/36C, 09/27)	121.3 (EAST)	
			133.325 (RWY 18R/36L)		

RADAR REQUIRED



VGSi and RNAV glidepath not coincident.									
SPUDR	PHILO	CRISM	BAIRE	FRAZE					
7000	6000	5000	4000	2400					
GP 3.00° TCH 55									
3.1 NM	3.1 NM	3.1 NM	5 NM	4.5 NM					
<table border="1"> <tr> <td>3000</td> <td>184° TRK</td> <td>LAPER</td> <td>134° TRK</td> <td>FLM</td> </tr> </table>					3000	184° TRK	LAPER	134° TRK	FLM
3000	184° TRK	LAPER	134° TRK	FLM					
CATEGORY	A	B	C	D					
RNP 0.21 DA		1272/40	383 (400-¾)						
RNP 0.25 DA		1283/50	394 (400-1)						
RNP 0.30 DA		1472-1½	583 (600-1½)						

SPECIAL AIRCRAFT & AIRCREW AUTHORIZATION REQUIRED

HIRL all Rwys
TDZ/CL all Rwys except 9-27

SE-1, 19 NOV 2009 to 17 DEC 2009

SE-1, 19 NOV 2009 to 17 DEC 2009

COVINGTON, KENTUCKY
Orig 08325

COVINGTON/CINCINNATI/NORTHERN KENTUCKY INTL (CVG)
39°03'N-84°40'W
RNAV (RNP) Z RWY 18L