

COVINGTON, KENTUCKY

AL-655 (FAA)

APP CRS	Rwy Idg	<b>8000</b>
<b>184°</b>	TDZE	<b>868</b>
	Apt Elev	<b>896</b>

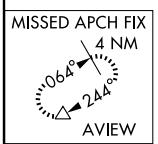
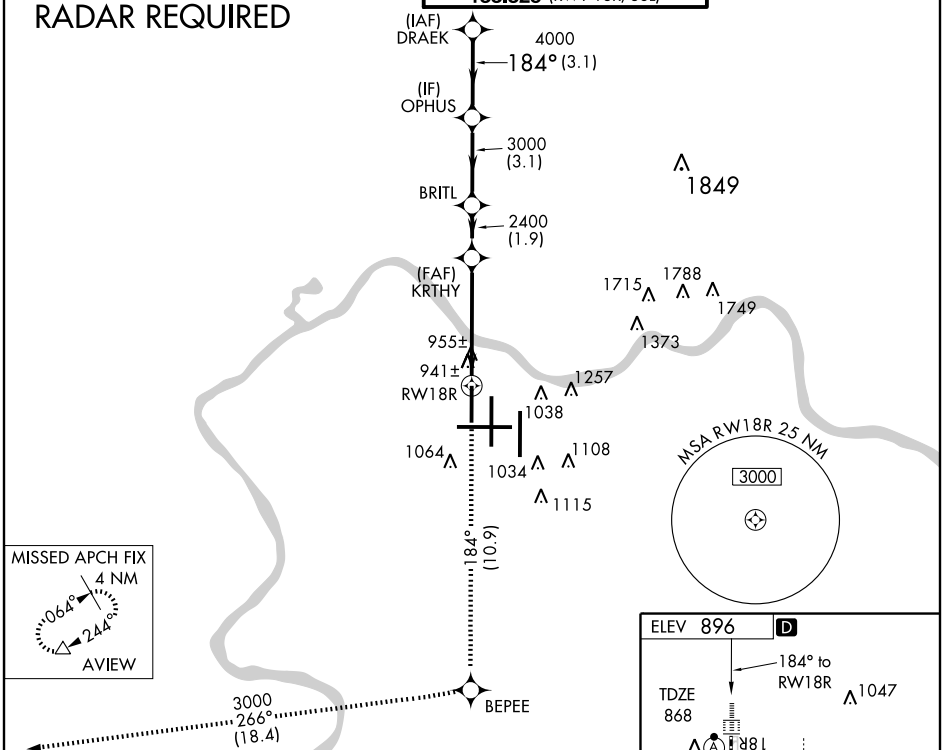
# RNAV (RNP) Z RWY 18R

COVINGTON/ CINCINNATI/ NORTHERN KENTUCKY INTL (CVG)

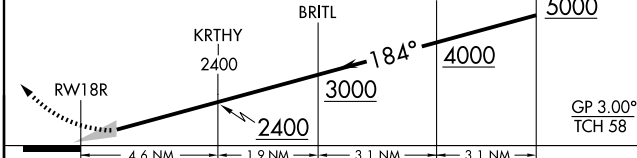
<p>▼ For inoperative ALSF, increase RNP 0.29 visibility to RVR 6000, RNP 0.30 visibility to 1½. For uncompensated Baro-VNAV systems, procedure NA below -16° C (4° F) or above 47° C (116° F).                  ▲ NA GPS required.</p>	ALSF-2	MISSED APPROACH: Climb to 3000 via 184° track to BEPEE and via 266° track to AVIEW and hold.

ATIS	CINCINNATI APP CON	CINCINNATI TOWER	GND CON	CLNC DEL
ARR	DEP	<b>119.7 254.25</b> (090°- 269°)	<b>121.7</b> (WEST)	<b>127.175</b>
<b>134.375</b>	<b>135.3</b>	<b>118.975 360.85</b> (RWY 18L/36R) <b>118.3</b> (RWYS 18C/36C, 09/27) <b>133.325</b> (RWY 18R/36L)	<b>121.3</b> (EAST)	

## RADAR REQUIRED

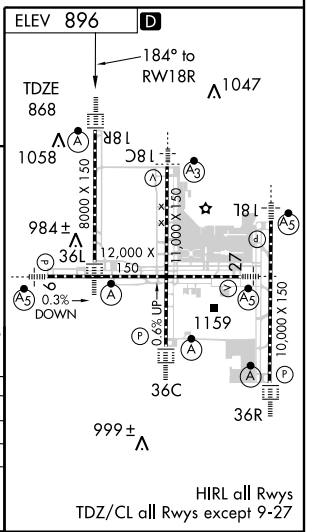


3000	TRK 184°	BEPEE	TRK 266°	AVIEW
------	----------	-------	----------	-------



CATEGORY	A	B	C	D
RNP 0.29 DA		1243/40	375 (400-¾)	
RNP 0.30 DA		1281/50	413 (400-1)	

## SPECIAL AIRCRAFT & AIRCREW AUTHORIZATION REQUIRED



HIRL all Rwys  
TDZ/CL all Rwys except 9-27

COVINGTON, KENTUCKY  
Orig 09015

COVINGTON/ CINCINNATI/ NORTHERN KENTUCKY INTL (CVG)  
39°03'N-84°40'W **RNAV (RNP) Z RWY 18R**

SE-1, 19 NOV 2009 to 17 DEC 2009

SE-1, 19 NOV 2009 to 17 DEC 2009