

# RNAV (RNP) Z RWY 27

COVINGTON/CINCINNATI/NORTHERN KENTUCKY INTL (CVG)

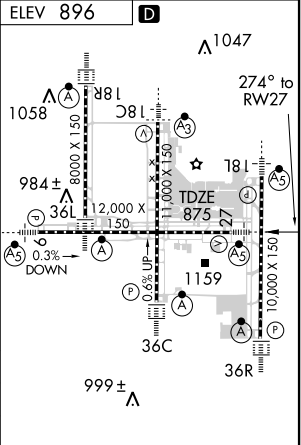
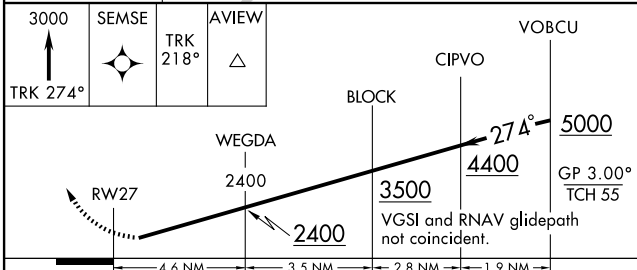
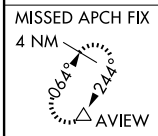
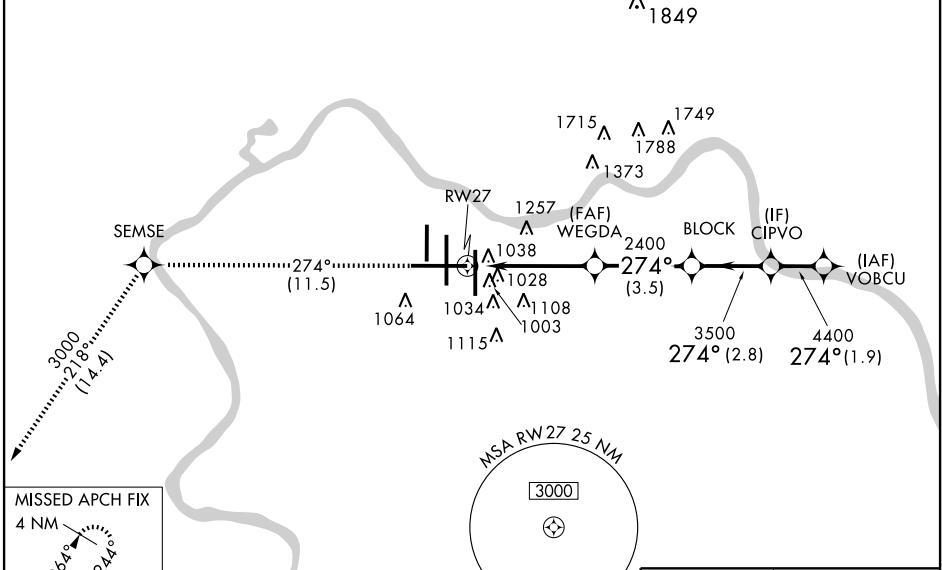
APP CRS <b>274°</b>	Rwy Idg <b>12000</b>
	TDZE <b>875</b>
	Apt Elev <b>896</b>

**NA** For uncompensated Baro-VNAV systems, procedure NA below -16° C (4° F) or above 47° C (116° F). For inoperative MALSR, increase RNP 0.15 visibility to 1½, RNP 0.23 visibility to 1¾, RNP 0.30 visibility to 2. Visibility reduction by helicopters NA. GPS Required.

**MALSR** MISSED APPROACH: Climb to 3000 via 274° track to SEMSE and via 218° track to AVIEW and hold.

ATIS ARR <b>134.375</b> DEP <b>135.3</b>	CINCINNATI APP CON <b>119.7 254.25</b> (090°- 269°) <b>123.875 363.15</b> (270°- 089°)	CINCINNATI TOWER <b>118.975 360.85</b> (RWY 18L/36R) <b>118.3</b> (RWYS 18C/36C, 09/27) <b>133.325</b> (RWY 18R/36L)	GND CON <b>121.7</b> (WEST) <b>121.3</b> (EAST)	CLNC DEL <b>127.175</b>
---	--	---	---	----------------------------

## RADAR REQUIRED



CATEGORY	A	B	C	D
RNP 0.15 DA	1296/50	421 (400-1)		
RNP 0.23 DA	1378/60	503 (500-1½)		
RNP 0.30 DA	1445-1½	570 (600-1½)		

**SPECIAL AIRCRAFT & AIRCREW AUTHORIZATION REQUIRED**

HIRL all Rwys  
TDZ/CL all Rwys except 9-27

SE-1, 19 NOV 2009 to 17 DEC 2009

SE-1, 19 NOV 2009 to 17 DEC 2009

# RNAV (RNP) Z RWY 27