

# RNAV (RNP) Z RWY 36C

COVINGTON/CINCINNATI/NORTHERN KENTUCKY INTL (CVG)

APP CRS	Rwy Idg	<b>11000</b>
<b>004°</b>	TDZE	<b>851</b>
	Apt Elev	<b>896</b>

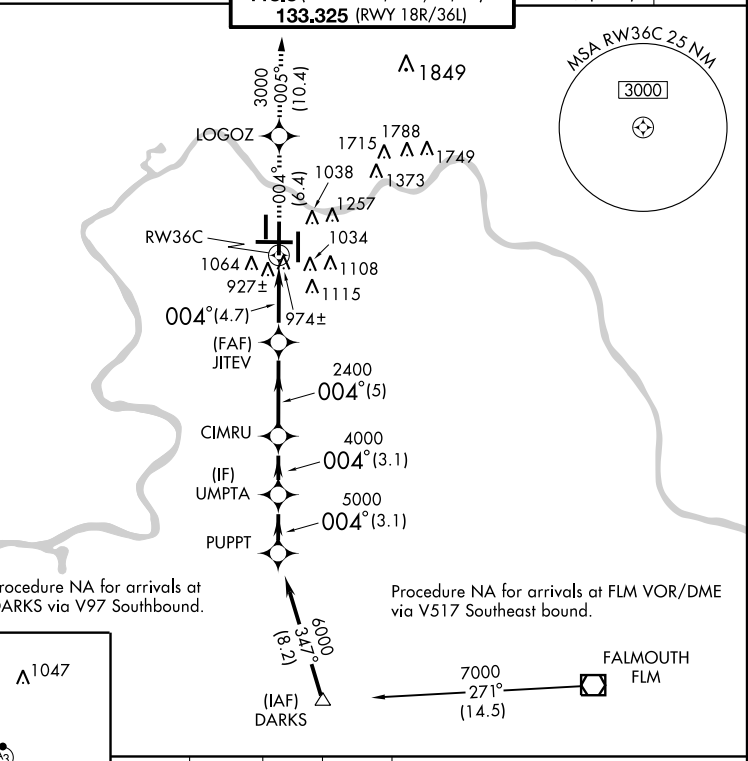
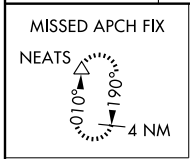
**▼** For uncompensated Baro-VNAV systems, Procedure NA below -16°C (4°F) or above 47°C (116°F). Visibility reduction by helicopters NA.  
**▲ NA** For inoperative ALSF, increase RNP 0.24 visibility to 1/2, RNP 0.30 visibility 1/4. GPS REQUIRED.

ALSF-2 MISSED APPROACH: Climb to 3000 via 004° track to LOGOZ and via 005° track to NEATS and hold.

ATIS	CINCINNATI APP CON
ARR <b>134.375</b>	DEP <b>135.3</b>
<b>119.7 254.25</b> (090° - 269°)	<b>123.875 363.15</b> (270° - 089°)

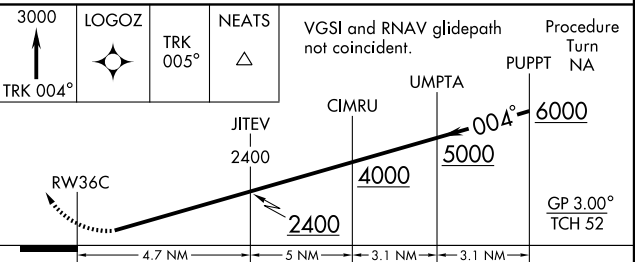
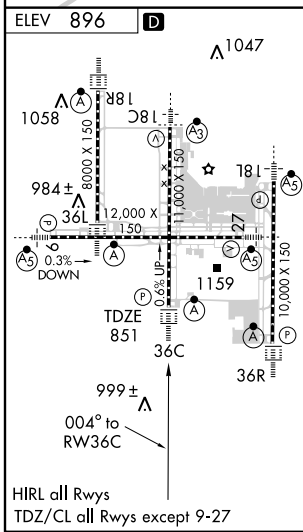
CINCINNATI TOWER
<b>118.975 360.85</b> (RWY 18L/36R)
<b>118.3</b> (RWYS 18C/36C, 09/27)
<b>133.325</b> (RWY 18R/36L)

GND CON	CLNC DEL
<b>121.7</b> (WEST)	<b>127.175</b>
<b>121.3</b> (EAST)	



Procedure NA for arrivals at DARKS via V97 Southbound.

Procedure NA for arrivals at FLM VOR/DME via V517 Southeast bound.



CATEGORY	A	B	C	D
RNP 0.24 DA		1295/50	444 (400-1)	
RNP 0.30 DA		1318/60	467 (500-1/4)	

**SPECIAL AIRCRAFT & AIRCREW AUTHORIZATION REQUIRED**

SE-1, 11 MAR 2010 to 08 APR 2010

SE-1, 11 MAR 2010 to 08 APR 2010