

COVINGTON, KENTUCKY

AL-655 (FAA)

# RNAV (RNP) Z RWY 36L

COVINGTON/CINCINNATI/NORTHERN KENTUCKY INTL (CVG)

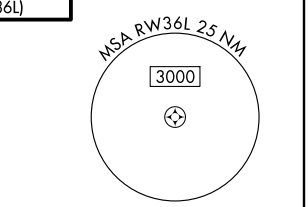
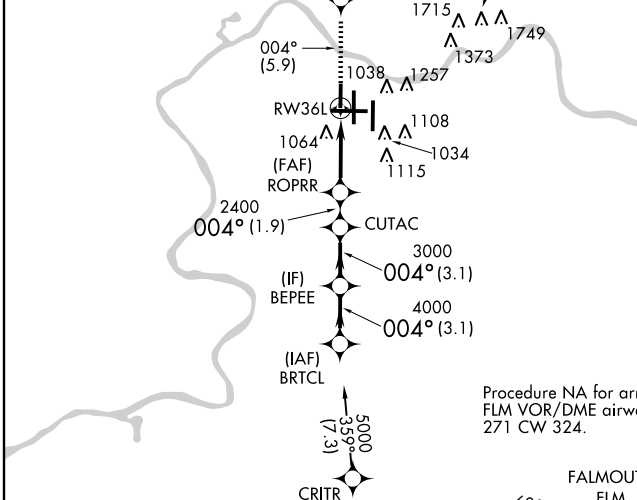
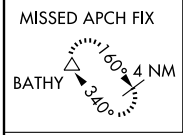
APP CRS <b>004°</b>	Rwy Idg <b>8000</b>
	TDZE <b>873</b>
	Apt Elev <b>896</b>

**NA** GPS Required. For uncompensated Baro-VNAV systems, procedure NA below -16°C (4°F) or above 47°C (116°F). For inoperative ALSF, increase RNP 0.29 and RNP 0.30 visibility to RVR 6000.

ALSF-2

MISSED APPROACH: Climb to 3000 via 004° track to KRTHY and via 327° track to BATHY and hold.

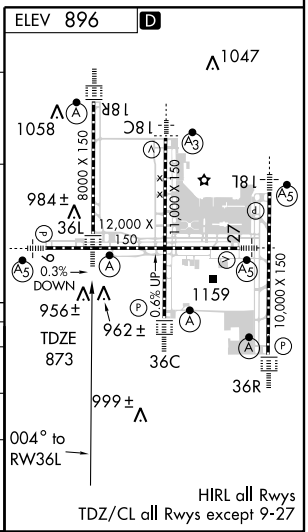
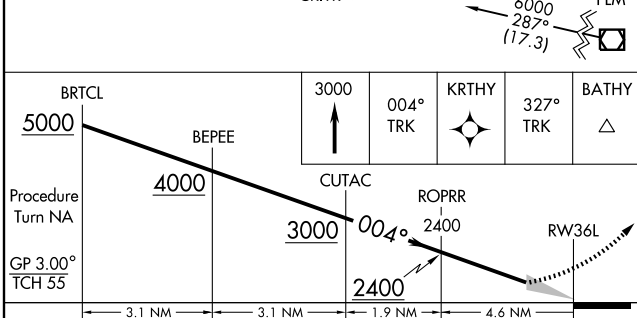
ATIS	CINCINNATI APP CON	CINCINNATI TOWER	GND CON	CLNC DEL
ARR <b>134.375</b> DEP <b>135.3</b>	<b>119.7 254.25</b> (090°-269°) <b>123.875 363.15</b> (270°-089°)	<b>118.975 360.85</b> (RWY 18L/36R) <b>118.3</b> (RWYS 18C/36C, 09/27) <b>133.325</b> (RWY 18R/36L)	<b>121.7</b> (WEST) <b>121.3</b> (EAST)	<b>127.175</b>



SE-1, 19 NOV 2009 to 17 DEC 2009

SE-1, 19 NOV 2009 to 17 DEC 2009

Procedure NA for arrivals on FLM VOR/DME airway radials 271 CW 324.



CATEGORY	A	B	C	D
RNP 0.29 DA		1261/40	388 (400-¾)	
RNP 0.30 DA		1264/50	391 (400-1)	

**SPECIAL AIRCRAFT AND AIRCREW AUTHORIZATION REQUIRED**

HIRL all Rwys  
TDZ/CL all Rwys except 9-27

COVINGTON, KENTUCKY  
Orig 08325

COVINGTON/CINCINNATI/NORTHERN KENTUCKY INTL (CVG)  
39°03'N-84°40'W **RNAV (RNP) Z RWY 36L**